

4 Bedroom Apartment / Flat for rent in Bani Park, Jaipur

75,000



4 Bhk New Flat For Rent Available In Big Society Banipark

Near Circle, Bani Park, Jaipur - 302016 (Rajasthan)

- Area: 2750 SqFeet ▼
- Bedrooms: Four
- Bathrooms: Four
- Floor: Fourth
- Total Floors: Nine
- Facing: West
- Furnished: Semi Furnished
- Lease Period: 12 Months
- Monthly Rent: 75,000
- Rate: 27 per SqFeet + 15%
- Age Of Construction: 1 Years
- Available: Immediate/Ready to move

Advertiser Details



Vicky Associates
Seema sharma
Owner/Proprietor

Vaishali Nagar, Jaipur
mob: 9413014431
tel: 8963048904
mail:
www.propertywala.com/vicky-associates



Scan QR code to get the contact info on your mobile

[View all properties by Vicky Associates](#)

Description

4 bhk new flat available in big society banipark 2 car parking servant quarter only serious buyer call me

When you contact, don't forget to mention that you saw this ad on PropertyWala.com.

Features

General

- Power Back-up
- Room AC
- Lifts

Lot

- Balcony
- Basement
- Corner Location

Exterior

- Reserved Parking
- Visitor Parking
- Servant Quarter
- Park
- Fitness Centre / GYM
- Club / Community Center

Maintenance

- Maintenance Staff
- Water Supply / Storage
- RO System
- Water Softner
- Boring / Tube-well
- Waste Disposal

Security

- Security Guards
- Electronic Security
- Intercom Facility
- Fire Alarm

Interior

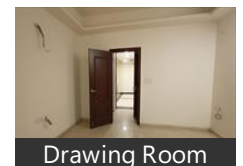
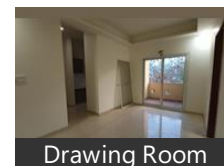
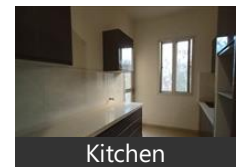
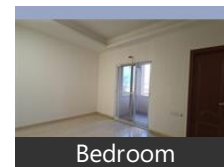
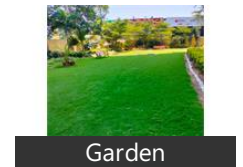
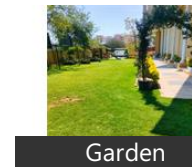
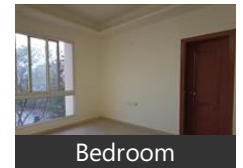
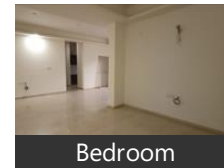
- Woodwork
- Modular Kitchen

Recreation

- Park
- Fitness Centre / GYM
- Club / Community Center

Location

Pictures



* Location is approximate

Locality Reviews

Bani Park, Jaipur

Bani Park is one of the oldest and most posh locality of Jaipur . It is in the heart of the city with the Collectorate and Commissioners offices at a stones throw. The elite of Jaipur used to live in this area and the Jaipur cantonment area is just next door. It is perhaps the safest area in Jaipur to live in. Railway Station and Central Bus stand are in the range of one to one and a half Km. All the markets and Five star Hotels are within one Km. Hospitals are nearby. It is perhaps the best address in Jaipur.

Pros:

- It is a pleasure to stay with the elite with all basic facilities.
- All basic facilities very close with open area all round.

Cons:

- Marketing mat be slightly costly.

Posted: Sep 12, 2020 by K.K. Bhargava

One of the posh colony in Jaipur where Railway Station, Bus Stand and Government offices situated, Banipark is the heart of Jaipur and connected to main Bazar.

Pros:

- *Commercial location*

Posted: Jun 20, 2020 by [M Rathore \(Marwar Properties\)](#)

Bani Park is one of the oldest and posh locality of Jaipur brimming with upcoming hotels and offices. It is well connected with wide roads to Sindhi camp bus station and railway station, thus making it a commercial hub.

Pros:

- *Good Roads*
- *Well developed area*

Cons:

- *Traffic at peak hour*
- *No Malls*

Posted: Feb 21, 2016 by Saumya Poonia

Bani Park, Jaipur is rated 6 out of 10 based on 3 user reviews.

Disclaimer: The reviews are opinions of PropertyWala.com members, and not of PropertyWala.com.

Explore

[Similar Properties](#)

[Properties in Bani Park, Jaipur](#)

[Projects in Jaipur](#)

[Brokers in Jaipur](#)

More Information

Report a problem with this listing

Is this property no longer available or has incorrect information?

[Report it!](#)

Disclaimer: All information is provided by advertisers and should be verified independently before entering into any transaction. You may visit the relevant RERA website of your state to verify the details of this property. PropertyWala.com is only an advertising platform to help connect buyers and sellers and is not a party to any transactions, nor shall be responsible or liable to resolve any disputes between them.