

# 1 Bedroom Paying Guest for rent in Poonamallee, Chennai

4,500



## S.P Women's Hostel In Karayanchavadi

Karayanachavadi, Poonamallee, Chennai - 600056 (Tami...

- Area: 400 SqMeters ▼
- Bathrooms: One
- Total Floors: Two
- Furnished: Semi Furnished
- Monthly Rent: 4,500
- Age Of Construction: 5 Years
- Available: Immediate/Ready to move
- Bedrooms: One
- Floor: First
- Facing: North
- Lease Period: 11 Months
- Rate: 11 per SqMeter **-75%**

## Advertiser Details

**Subha sree**  
Office Administrator

Poonamallee, Chennai  
mob: 7200096036  
tel: 9150012454  
mail:  
www.propertywala.com/U90998996



Scan QR code to get the contact info on your mobile

## Description

S.P Women's Hostel in karayanchavadi

Welcome to SP Women's Hostel, nestled in the heart of Karayanachavadi! Our hostel is designed to provide a comfortable and secure living space for women, offering a range of amenities to ensure a pleasant stay.

When you call, don't forget to mention that you found this ad on PropertyWala.com.

## Features

### General

- Power Back-up
- Wi-Fi

### Lot

- Balcony

### Maintenance

- RO System

### Security

- Security Guards

### Exterior

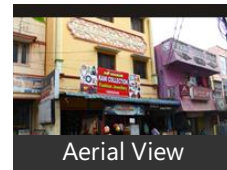
- Reserved Parking

### Other features

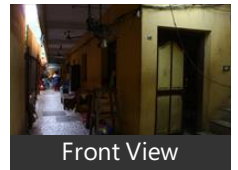
- food provide

## Location

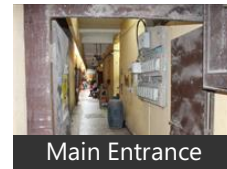
## Pictures



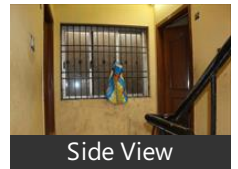
Aerial View



Front View



Main Entrance



Side View

\* Location may be approximate

## Landmarks

### Hostel

S. P. Women, Nisha Ladies Hostel (<0.5km), MSS Golden Jubilee Women S Hoste...

### Restaurant & Shops

Paramount Clothing Co (<0.5km), Akr Store (<0.5km), Europa (<0.5km), SSS Tomato Mandi (<0.5km), Nisha Garments (<0.5km), Thirukumaran Stores (<0.5km), MNP Store (<0.5km), Women S Choice (<0.5km), Saravana Provision Stores (<0.5km), Akr Stores (<0.5km), Jockey (<0.5km), Dark Knights (<0.5km), Family Fresh Market (<0.5km), Hash Tag (<0.5km), Magi Opticals (<0.5km), Bata (<0.5km), Sai Designs (<0.5km), Chennai Cine Costumes (<0.5km), Fashion House (<0.5km), Anar Nuts & Chocolate (<0.5km), Vaa Macha Trends (<0.5km), Crescent Shoes (<0.5km), Tiny Seed Fancy Dresses (<1km), K M Men S Wear & Kids Collections (.. Red Tag (<1km), Super Shopping (<1km), Sky Footwear (<1km), Dhaman Store (<1km), Rasak Arisi Kadai (<1km), Chudidhar Collection (<1km)

### Hospitals & Clinics

Padma Dental Clinic (<0.5km), Karthik (<0.5km), VRJ Clinic (<0.5km), Esi Dispensary (<0.5km), Siva Labarotories (<0.5km), Shri Sai Consultation Centre (<0.5km... Nova Ivf Fertility Center - Best Ivf Cen. Lenskart.Com (<0.5km), Mookambika in Diagnostic Lab (<0.5.. Sugunalingam Clinic (<0.5km), Ammu Puttur Kattu Parambariya Nu... Santhosh Dental Clinic (<0.5km), Vijee Clinical Laboratory (<0.5km), Vasanthi Hospital (<0.5km), Vasanthi Hospital-ER (<0.5km), VMS Clinic (<0.5km), Chinnammal Ent Hospital-ER (<0.5km Chinnammal Ent Hospital (<0.5km), Medium Labs (<0.5km),

DR.James Devasagayam Clinic (<0.5km), Dental World (<0.5km), Aravind Eye Hospital (<0.5km), DRR Eye Care & Oculoplasty Hospita... Point of Care Diagnostic Center (<0.5. Akshaya Dental Care (<0.5km), Samy Dental Hospital-ER (<0.5km), Samy Dental Hospital (<0.5km), Sami Dental Hospital (<1km), Prem Dental Clinic (<1km), Lavanya Ayurveda (<1km), Skope Clinic (<1km), Sakthi Multispeciality Clinic (< [more...](#)

## Locality Reviews

Poonamallee, Chennai

Poonamallee is fast growing suburb in Chennai, and it is consider the gate way for connecting to Anadhra and Karnataka.

### Pros:

- *Fast development*
- *Metro rail connectivity proposed*
- *Close proximity to ring roads*

### Cons:

- *Most congested*
- *Need better civic developments*

Posted: May 2, 2022 by [Vijaykumar swaminathan \(Svk Realtors\)](#)

Well developed area. School and colleges are nearby. Good connectivity. All food provisions are available.

### Pros:

- *Good connectivity*
- *Pleasant climate*
- *Good connectivity*

### Cons:

- *Crowded area*

Posted: Mar 13, 2019 by [Ponniiah Arumugam \(Padma Reality\)](#)

Poonamallee can be roughly translated to mean "the place where jasmine grows". The locality has an equally rich cultural heritage with a number of temples and legends. The social infrastructure in this area envelops a number of good hospitals, clinics, nursing homes, and doctors' chambers. Armed with strong healthcare infrastructure and educational institutes, like St. John's International Residential School, Sundar Matriculation School, Chennai Public School, Holy Crescent Matriculation School, Saveetha Dental College, and SA Engineering College, Panimalar Engineering Collage etc. Poonamallee is all set to become a big realty hub in the future. One of the winning features of this locality is its smooth transport system. The most popular mode of public transport here are the buses, both State-run and private. Auto-rickshaws are the next most popular mode of travel.

### Pros:

- *Good location*

Posted: Apr 21, 2016 by [kalaivani R \(Tirupatiyar Groups\)](#)

Poonamallee, a suburb in south Chennai, has recorded a huge appreciation in the residential property segment in the past few months. Excellent connectivity, proximity to IT hubs and availability of well-developed infrastructure have ensured that in spite of being a commercial hub originally, Poonamallee is receiving its fair share of residential demand as well. "Exorbitant prices in Anna Nagar and Porur have resulted in the demand for residential housing shifting towards Poonamallee which is situated close to these localities yet within the affordable range.

### Pros:

- *Best Location*

Posted: Dec 9, 2015 by [oviya raj \(Ganesh Sundaram Builders\)](#)

Poonamallee is a nice place to live in. Poonamallee is a calm and quiet place. It is having good connectivity. Transportation is good in this area. Plenty of share auto is also available over here. Surrounded by schools, colleges, temple's. Market and hotels are very near by. No traffic jam. No water problem. Nice place suitable for bachelor's, couples, family and for all.

### Pros:

- *Plenty of buses*
- *Near by college Hotel*
- *Near by bus stand, market, Temple*

### Cons:

- *No train facilities*

Posted: Oct 26, 2014 by Narayanan V

Poonamallee new layout for near TNHB satellite township. Fully furnished area. Many manufacturing industries are located here.

### Pros:

- *Satellite township on road side*
- *No negativity as poonamallee is a fast devoleping suburb in chennai*

Posted: Jul 16, 2014 by Karthik krishnan

Poonamallee is the best locality and very well connected to Aurora and easy access to the city via an NH-4 express way. Educational institutions, health care facilities and entertainment centers are just around. Poonamallee is a nice and peaceful residential locality to stay.

### Pros:

- *Good living atmosphere*

Posted: Oct 3, 2013 by [Tharan R \(Rich India Housing\)](#)

Very good location and many manufacturing industries are located here. Many colleges and international schools, two entertainment theme parks are here. Irukattukotai Sipcot is located here.

### Pros:

- *1500 manufacturing companies*
- *Chennai to Bangalore highways connected to Sriperumputhur*

- [Irukattukotai Sipcot is located here](#)

Posted: Aug 31, 2013 by [Prince George \(Crescentz Homes And Infrastructure\)](#)

The town of Poonamallee is situated at a distance of 23 kilometres from Fort St George and 17 kilometres from Sriperumbudur on the Chennai-Bangalore highway. It is located at the end of the Mount-Poonamallee Road, 11 kilometres from Guindy and 13 kilometres from Chennai Mofussil Bus Terminus on the Chennai bypass. The nearest railway station is at Avadi which is nine kilometres away. It is also an important halting point for buses starting from Chennai Mofussil Bus Terminus and going towards Tirupati, Kanchipuram, Vellore etc.

**Pros:**

- *Halting point of Chennai Mofussil Bus*
- *Industrial Area with many car companies, showrooms and service centers*
- *Nearest satellite town for Chennai city*

**Cons:**

- *Traffic in the peak hours*
- *No shopping mall*
- *Slightly outer to city environment*

Posted: May 15, 2013 by [Pugazhenth Thangavellu \(Sri Ranjana Builders\)](#)

Poonamallee, Chennai is rated 7 out of 10 based on 9 user reviews.

Disclaimer: The reviews are opinions of PropertyWala.com members, and not of PropertyWala.com.

Explore

[Similar Properties](#)

[Properties in Poonamallee, Chennai](#)

[Projects in Chennai](#)

[Brokers in Chennai](#)

More Information

Report a problem with this listing

Is this property no longer available or has incorrect information?

[Report it!](#)

**Disclaimer:** All information is provided by advertisers and should be verified independently before entering into any transaction. You may visit the relevant RERA website of your state to verify the details of this property. PropertyWala.com is only an advertising platform to help connect buyers and sellers and is not a party to any transactions, nor shall be responsible or liable to resolve any disputes between them.