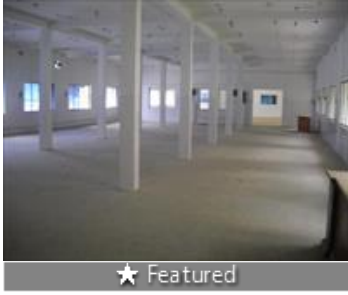


Warehouse / Godown for rent in Poonamallee, Chennai

17.5 lakhs



★ Featured

RCC Warehouse Space At Poonamalle For Rent

Main Road, Poonamallee, Chennai - 600056 (Tamil Nadu)

- Area: 70000 SqFeet ▼
- Bathrooms: Ten
- Floor: Ground
- Total Floors: One
- Facing: North
- Furnished: Unfurnished
- Lease Period: 24 Months
- Monthly Rent: 1,750,000
- Rate: 25 per SqFeet
- Age Of Construction: 12 Years
- Available: Immediate/Ready to move

Advertiser Details



Ameen Kutty
 Property Consultant
 Ashok Nagar, Chennai

mob: 9841140122
 tel: 44-24749358
 mail: snenterpriseschennai@gmail.com
 propertywala.com/s-n-enterprises-chennai

Scan QR code to get the contact info on your mobile

[View all properties by S N Enterprises](#)

Description

70,000 Sqft Rent Rs.25 Per Sft, RCC Structure, G Floor, Ceiling Height 12 Ft, 200Hp Power, Dock & Ramp, Rest room, Loading & Unloading Units with ample Parking facility available in warehouse at Poonamalle, Ready for immediate occupation. Rent and advance are negotiable. Call us for more Warehouse spaces in all areas in and around chennai.

When you contact, don't forget to mention that you saw this ad on PropertyWala.com.

Features

Exterior

- Reserved Parking
- Visitor Parking

Maintenance

- Water Supply / Storage
- Boring / Tube-well
- Rain Water Harvesting
- Waste Disposal

Location

* Location may be approximate

Landmarks

Public Transport

Poonamallee (<0.5km), Iyyappanthangal Bus Depot (<7km), Thiruverkadu (<6km), Avadi (<11km), Avadi Bus Station (<11km), Hindu College (<11km), Kundrathur B. S (<8km), Mogapair West (<13km), Mogapair Bus Station (<13km), Karayancahvasi (<3km), Pattabiram (<12km), Kesavarthini Bus Stop (<13km), Check Post (<11km), Ambattur (<14km), Anakaputhur (<11km), Annanur (<12km), Thirumullaivoyal (<12km), Bus Stop (<13km), Kundrathur Murugan Temple (<8km), Mel Ayanambakkam (<10km), Vaanagaram (<10km)

Hotel

Hotel Chennai le Palace (<10km), Hotel Vaithee Park (<5km), Fisherman, Motel Highway (<1km), Oyo 24311 Sai Sasi Residency (<1km), Oyo 15507 Sunshine Highway Inn (<...

Recreation

Queens Land (<10km), Sundar Theatre (<1km), Sri Gopala Krishna Cinema (<11km), Shri Murugan Talkies (<13km), Ganesh Theatre (<11km), Anna Park (<7km), Valasaravakkam Panchayat Ground (...)

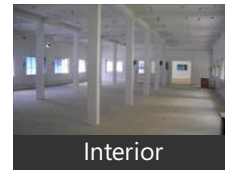
Building

Kendriya Vihar (<7km), Sai Maniam (<10km), Tribhuvan (<12km), Prestige Bella Vista-Main Entrance (<...), VGN Krona (<9km), Sky City Phase I (<9km), Lakshmi Homes (<11km), VGN Minerva (<11km), The Pacific City (<11km), Indira Splendor (<13km), VGN Spark (<8km)

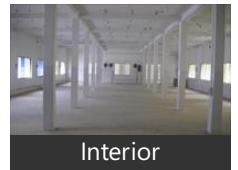
Hospitals & Clinics

Saveetha Dental Col and Hosp (<5km), Mangalam Hospital (<1km), Hriday General Hospital (<11km), Aavadiagam Hospital (<11km), Premier Health Center (<13km), Srushti Fertility Centre & Women, Apollo Institute of Hospital (<10km), J R R Dental Clinic (<10km), Dr Agarwals Eye Hospital (<10km)

Pictures



Interior



Interior

Locality Reviews

Poonamallee, Chennai

Poonamallee is fast growing suburb in Chennai, and it is consider the gate way for connecting to Anadhra and Karnataka.

Pros:

- *Fast development*
- *Metro rail connectivity proposed*
- *Close proximity to ring roads*

Cons:

- *Most congested*
- *Need better civic developments*

Posted: May 2, 2022 by [Vijaykumar swaminathan \(Svk Realtors\)](#)

Well developed area. School and colleges are nearby. Good connectivity. All food provisions are available.

Pros:

- *Good connectivity*
- *Pleasant climate*
- *Good connectivity*

Cons:

- *Crowded area*

Posted: Mar 13, 2019 by [Ponniah Arumugam \(Padma Reality\)](#)

Poonamallee can be roughly translated to mean "the place where jasmine grows". The locality has an equally rich cultural heritage with a number of temples and legends. The social infrastructure in this area envelops a number of good hospitals, clinics, nursing homes, and doctors' chambers. Armed with strong healthcare infrastructure and educational institutes, like St. John's International Residential School, Sundar Matriculation School, Chennai Public School, Holy Crescent Matriculation School, Saveetha Dental College, and SA Engineering College, Panimalar Engineering Collage etc. Poonamallee is all set to become a big realty hub in the future. One of the winning features of this locality is its smooth transport system. The most popular mode of public transport here are the buses, both State-run and private. Auto-rickshaws are the next most popular mode of travel.

Pros:

- *Good location*

Posted: Apr 21, 2016 by [kalaivani R \(Tirupatiyar Groups\)](#)

Poonamallee, a suburb in south Chennai, has recorded a huge appreciation in the residential property segment in the past few months. Excellent connectivity, proximity to IT hubs and availability of well-developed infrastructure have ensured that in spite of being a commercial hub originally, Poonamallee is receiving its fair share of residential demand as well. "Exorbitant prices in Anna Nagar and Porur have resulted in the demand for residential housing shifting towards Poonamallee which is situated close to these localities yet within the affordable range.

Pros:

- *Best Location*

Posted: Dec 9, 2015 by [oviya raj \(Ganesh Sundaram Builders\)](#)

Poonamallee is a nice place to live in. Poonamallee is a calm and quit place. It is having good connectivity. Transportation is good in this area. Plenty of share auto is also available over here. Surrounded by schools, colleges, temple's. Market and hotels are very near by. No traffic jam. No water problem. Nice place suitable for bachelor's, couples, family and for all.

Pros:

- *Plenty of buses*
- *Near by college Hotel*
- *Near by bus stand, market, Temple*

Cons:

- *No train facilities*

Posted: Oct 26, 2014 by Narayanan V

Poonamallee new layout for near TNHB satellite township. Fully furnished area. Many manufacturing industries are located here.

Pros:

- *Satellite township on road side*
- *No negativity as poonamallee is a fast devoleping suburb in chennai*

Posted: Jul 16, 2014 by Karthik krishnan

Poonamallee is the best locality and very well connected to Aurora and easy access to the city via an NH-4 express way. Educational institutions, health care facilities and entertainment centers are just around. Poonamallee is a nice and peaceful residential locality to stay.

Pros:

- *Good living atmosphere*

Posted: Oct 3, 2013 by [Tharan R \(Rich India Housing\)](#)

Very good location and many manufacturing industries are located here. Many colleges and international schools, two entertainment theme parks are here. Irukattukotai Sipcot is located here.

Pros:

- *1500 manufacturing companies*
- *Chennai to Bangalore highways connected to Sriperumputhur*
- *Irukattukotai Sipcot is located here*

Posted: Aug 31, 2013 by [Prince George \(Crescentz Homes And Infrastructure\)](#)

The town of Poonamallee is situated at a distance of 23 kilometres from Fort St George and 17 kilometres from Sriperumbudur on the Chennai-Bangalore highway. It is located at the end of the Mount-Poonamallee Road, 11 kilometres from Guindy and 13 kilometres from Chennai Mofussil Bus Terminus on the Chennai bypass. The nearest railway station is at Avadi which is nine kilometres away. It is also an important halting point for buses starting from Chennai Mofussil Bus Terminus and going towards Tirupati, Kanchipuram, Vellore etc.

Pros:

- Halting point of Chennai Mofussil Bus
- Industrial Area with many car companies, showrooms and service centers
- Nearest satellite town for Chennai city

Cons:

- Traffic in the peak hours
- No shopping mall
- Slightly outer to city environment

Posted: May 15, 2013 by [Pugazhenthii Thangavellu \(Sri Ranjana Builders\)](#)

Poonamallee, Chennai is rated 7 out of 10 based on 9 user reviews.

Disclaimer: The reviews are opinions of PropertyWala.com members, and not of PropertyWala.com.

Explore

[Similar Properties](#)

[Properties in Poonamallee, Chennai](#)

[Projects in Chennai](#)

[Brokers in Chennai](#)

More Information

Report a problem with this listing

Is this property no longer available or has incorrect information?

[Report it!](#)

Disclaimer: All information is provided by advertisers and should be verified independently before entering into any transaction. You may visit the relevant RERA website of your state to verify the details of this property. PropertyWala.com is only an advertising platform to help connect buyers and sellers and is not a party to any transactions, nor shall be responsible or liable to resolve any disputes between them.