

Sushma Urban Views - Ambala Highway, Zirak...



Redefining Your Lifestyle

Sushma Urban Views features 3 BHK apartments created specially for people who have taste and an eye for quality. It is a complex where bliss prevails. It is conveniently located on 100ft wide road with 30ft internal roads.

- Project ID : J290430411
- Builder: Sushma Buildtech Pvt. Ltd.
- Properties: Apartments / Flats, Independent Houses, Office Spaces
- Location: Sushma Urban Views, Gazipur, Ambala Highway, Zirakpur (Chandigarh)
- Completion Date: Dec, 2011
- Status: Started

Description

Sushma Buildtech Pvt. Ltd.-The company with a new vision in Real Estate and Infrastructure development, in residential, commercial and IT sector. We at Sushma Buildtech find and develop opportunities. Our mission is to create environment that are well expressive, well designed and tailored to the needs of the communities, we serve. We are committed to explore new dimensions to accomplish our projects, new ways of counseling clients, new methods of doing business, utilization of new technologies and more important of all create trust.

Sushma Urban Views features 3 BHK apartments created specially for people who have taste and an eye for quality. It is a complex where bliss prevails. It is conveniently located on 100ft wide road with 30ft internal roads in a pollution free environment and loaded with world class living amenities. Every apartment here is intelligently designed (Both side open) to provide more space, light and ventilation. Sushma Urban Views is developed with 79% approx. open area, green belt all around the complex, 24 hrs walled security, Provision for 100% power back and round the clock water supply. It is just a stone throw away from Panchkula and 5 minutes drive to city beautiful Chandigarh having defined combination of facilities, location, infrastructure and planning that offers a lot for those who desire to have luxury and living in style.

Sushma Urban Views will meet all your aspirations of living in an urban style. It offers the luxury of life at an affordable cost. It's about redefining the quality of life, and offering the best in its class. The well-integrated apartments will be fitted to every aspect of living in its own style.

Highlights:

- Both Side Open Flats
- 79 % (approx.) Open Area
- 100 Ft. Wide Drive-in Road
- Proposed Golf Course & Lake Nearby
- Intelligently Designed Unit Plan

Salient Features:

- 100% Power back-up
- 24 Hours Security with Boom Barrier & video surveillance
- 24 Hours Water Supply
- Premium Multi-level club with Gym, Party Room & Indoor games etc.
- Swimming Pool
- Ample Parking Space
- Rain Water Harvesting
- Underground Drainage & cabling System
- Piped Gas Supply
- Hi-speed Elevators
- Fire Alarm systems
- Convenience Shops
- Intercom EPABX system
- Property Management Services
- Playing Area for kids
- Cross ventilation
- Large coffee-table balconies
- Water bodies, Jogging tracks
- Water & Sewerage Treatment Pl

Features

Luxury Features

- Power Back-up ■ Lifts ■ RO System
- High Speed Internet

Lot Features

- Private Terrace ■ Balcony ■ Corner Location
- Park Facing

Security Features

- Security Guards ■ Electronic Security
- Intercom Facility ■ Fire Alarm

Interior Features

- Woodwork ■ Modular Kitchen
- Feng Shui / Vaastu Compliant

Exterior Features

- Reserved Parking ■ Visitor Parking

Recreation

- Swimming Pool ■ Park ■ Fitness Centre / GYM
- Club / Community Center

Maintenance

- Maintenance Staff ■ Water Supply / Storage
- Rain Water Harvesting ■ Waste Disposal

Commercial Features

- Conference room ■ High Speed Internet / Wi-Fi

Land Features

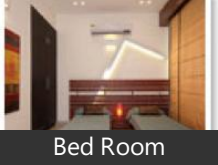
- Clear Title ■ Freehold Land ■ Society Boundary Wall
- Adjacent to Main Road ■ Park/Green Belt Facing
- Water Connection ■ Electric Connection
- Close to Hospital ■ Close to School
- Close to Shopping Center/Mall

Gallery

Pictures



Elevation



Bed Room



Living Room



Interior View



Aerial View



Sunset view



Dinning Hall



Kitchen

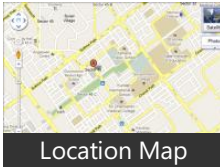
Floor Plans



Layout Plan



Floor Plan



Location Map

Location

Landmarks

Transportation

Railway Station (<11km), Railway Station Chandigarh (<11km), Chandigarh Railway Station (<11km), Chandigarh Railway Station Wwwwcha.. Domestic Airport (<6km), Chandigarh Airport (<7km), Chandigarh Airport (<8km), lxc Chandigarh Airport (<8km)

Markets & Shopping Malls

Chandigarh City Center Shopping M... National Sales Corporation The Furn...

* All distances are approximate

Properties

Type	Area	Possession	Price *
------	------	------------	---------

1BHK Apartment / Flat	400 SqFeet	-	₹ 15 lakhs
3BHK Apartment / Flat	1500 SqFeet	-	₹ 45 lakhs
3BHK Apartment / Flat	1680 SqFeet	-	₹ 48 lakhs
3BHK Apartment / Flat	1680 SqFeet	-	₹ 52 lakhs
3BHK Apartment / Flat	1685 SqFeet	-	₹ 46.75 lakhs
3 Bedroom Independent House	3560 SqYards	-	₹ 56 lakhs
Office Space	446 SqFeet	-	₹ 27.9 lakhs

* Data has been collected from publicly available sources and may not be up to date.

Sushma Urban Views News

Expert Reviews on Sushma Urban Views

Explore

[Projects in Zirakpur](#)

[Brokers in Zirakpur](#)

More Information

Report a problem with this listing

Is any information on this page outdated or incorrect?
[Report it!](#)

Disclaimer: All information is provided by builders, advertisers, or collected from publicly available sources and may not be verified as per RERA guidelines. Any information provided on this website, including facts and figures, should be verified independently before entering into any transaction. PropertyWala.com is only an advertising platform to help connect buyers and sellers and is not a party to any transaction, nor shall be responsible or liable to resolve any disputes between them.