

## Srijan Industrial Logistics Park - Domjur, Howra..



SILP is the most modern industrial facility

Srijan Industrial Logistics Park by Srijan Realty at NH 6, Domjur Howrah, Howrah offers Commercial project that host Warehouse, Godown in different sizes.

- Project ID: J918963821
- Builder: Srijan Realty
- Location: Srijan Industrial Logistics Park, NH-6, Domjur, Howrah (West Bengal)
- Completion Date: Dec, 2021
- Status: Started

### Description

**Srijan Industrial Logistics Park** by Srijan Realty at NH 6, Domjur Howrah in Kolkata offers commercial project that host Warehouse, Godown in the size ranges in between 5000 to 500000 sqft with all the amenities provided like Filtered water supply, CCTV Camera, Electric Connection, Departmental Store etc. The location of the project is well connected with other parts of city.

#### Amenities :

- Computerized weigh bridge
- 24-hour filtered water supply
- Restaurants Guest House
- Courier Service
- Site elevation above flood level
- 24x7 access with full security and CCTV surveillance
- DG power back up facility for all common services
- Professional and world class maintenance
- Electric connection
- Water and sewage treatment plant
- Solid waste disposal system
- Green landscaped environment
- Conference and Exhibition Rooms
- Travel Agents within the complex
- Departmental Stores

**Srijan Realty Pvt. Ltd.** is a fast-growing real estate company engaged in construction of several real estate projects across the country to meet the growing demand of an emergent India. Within 5 years of formation, the company has acquired an enviable reputation in Eastern India for its expertise in building construction.

### Features

#### Luxury Features

- Power Back-up ■ High Speed Internet

#### Exterior Features

- Visitor Parking

#### Commercial Features

- Cafeteria / Food Court ■ Service / Goods Lift

#### Security Features

- Security Guards ■ Electronic Security

#### Maintenance

- Water Supply / Storage

### Gallery

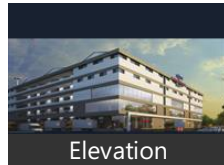
#### Pictures



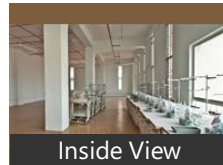
Front View



Parking Lot



Elevation



Inside View

### Floor Plans



Master Plan

### Location

## Landmarks

### Recreation

Botanical Gardens (<10km)

### Public Transport

Santragachi (<8km), Khatirbazar (<2km), Andul (<4km), Maurigram Railway Station (<5km), Dasnagar (<11km), Akra (<14km), Bankra Munshidanga Bus Stop (<7km), Santragachi Bus Station (<10km), Padmapukur (<12km), Nalpur (<13km), Mandir Tala (<13km), Santoshpur (<13km), Tikiapara (<14km)

### Hotel

Fortune Park Panchwati Hotel (<6km), Sonar Bangla, The Lake Land Country Club (<6km), Highway Inn International-Dhulagor... Oyo 27878 Highway Inn Internationa... Hotel Jaypee Inn (<4km), Lake Land Country Club Residency (<7km), Fabexpress Vinita Welcome (<7km), Oyo 13906 Vinita Inn (<8km), Hotel Utsav Plaza (<8km), Hotel Balaram-Jangalpur (<1km), DK Guest House (<8km)

### Hospitals & Clinics

West Bank Hospital (<8km), Disha (<9km), Das Clinic (<4km), Chapatala Medical Stores (<6km), Mallick Pharmacy (<7km), Dr K Z Ahmed (<7km), Hospital (<10km), Superintendent Gabberia St Gen Hos... Narayana Superspeciality Hospital (<10km), Dristi Eye Foundation (<13km), Shree Krishna Homeo Clinic (<0.5km), Shri Krishna Homeo Clinic (<0.5km), Homoeopathic (<1km)

### ATM/Bank/Exchange

Idbi Bank (<13km), State Bank of India (<3km), Allahabad Bank-Andul (<3km), Bank of Baroda (<13km), Axis Bank (<9km), Bank Of India (<11km), Central Cooperative Bank-Dhulagarh... Canara Bank (<13km)

### Building

Shree Shree Ardhendu Bhawan (<12km), Mothodhara (<13km), Kolkata West International City (<6km), Sahara (<7km), Sabyasachi (<10km), Mani Kana Bhaban (<10km), Mohona (<10km), Shraban Villa (<11km), Sweet Home (<11km), Khelaghar (<11km), Shibpur Harsh Residents Welfare Ass... Rabindra Nagar Complex (<13km), Sonartori (<13km), Nandan (<13km), Santiniketan Apartment (<14km), Shree Hari Complex (<1km)

### Business & Services

Mohit Bakers (<7km), Nabanna Bhavan (<13km), Sankrail Industrial Park (<8km), Southern Generating Station (<12km), Gates Leakfree Fluids Conveyance (<10km), Milop Engineering Works (<0.5km), Saini JCB (<0.5km), Chetan Logistics (<0.5km), Viswarupa Steel (<0.5km), Preimer Power Products (<1km), Jindal Steel & Power (<1km), Emami Biotech (<1km), Gem Allied Industries (<1km), Neha Galvanizers India (<1km), Inza Galvanizing Co (<1km), A M Industries (<1km), R R Packers & Movers (<1km), Hazi Heritage (<1km), Suyash Patnts & Varnish (<1km), F Herly & Company (<1km), Alltech Biotechnology (<1km), J G Chemicals (<1km), Kiswok Industries (<1km), Anmol Agri Farms Inputs (<1km), MR Systems (<1km), Rahee Track Technology (<1km), Rashtriya Ispat Niagam (<1km), Dhakalia Investment (<1km)

### Shopping Centre

Bidhan Market (<13km), Chandni Market (<11km)

### Ferry Terminal

Metiabruz Ferry Ghat (<11km)

### Restaurant & Shops

Howrah Maidan (<13km), New Chandni Stores (<0.5km), Aa Shitala Mistanna Bhandar (<0.5km)

### Petrol Station

Hindustan Petroleum (<0.5km)

\* All distances are approximate

## Properties

### Srijan Industrial Logistics Park News

### Expert Reviews on Srijan Industrial Logistics Park

Explore

[Projects in Howrah](#)

[Brokers in Howrah](#)

More Information

Report a problem with this listing

Is any information on this page outdated or incorrect?

[Report it!](#)

**Disclaimer:** All information is provided by advertisers, including builders/agents/owners, or collected from publicly available sources and may not be verified under RERA. Any information provided on this website, including facts and figures, should be verified independently, including via the relevant RERA website, before entering into any transaction. PropertyWala.com is only an advertising platform to help connect buyers and sellers and is not a party to any transaction, nor shall be responsible or liable to resolve any disputes between them.

[Home](#) » [Howrah Real Estate](#) » [Projects in Howrah](#) » [Srijan Industrial Logistics Park - Domjur, Howrah](#)