

Rohan Ashima - Brooke Field, Bangalore



Luxurious Town Houses

Rohan Ashima is a collection of town houses. In other words, town houses are independent homes built adjacent to each other, with a sturdy common wall between them.

- Project ID : J303036119
- Builder: Rohan Group
- Properties: Independent Houses, Apartments / Flats
- Location: Rohan Ashima, Brooke Field, Bangalore (Karnataka)
- Completion Date: Mar, 2009
- Status: Completed

Description

Rohan Group today, is a strong, multifaceted, multi-disciplinary and vibrant organization, committed to delighting our customers through innovation. We strive to achieve the highest degree of technical excellence while maintaining the finest standards of business practices in all our endeavors. It is this trait that has always attracted the most talented people to our company.

Rohan Ashima is a collection of town houses. In other words, town houses are independent homes built adjacent to each other, with a sturdy common wall between them. Yet, they have been staggered to break the monotony. At Rohan Ashima, 30% of the land is shimmering water scapes and lagoons with stone slabs that you can walk on. Stroll through the greenery and you will notice that there are no driveways. You see, we've restricted parking to the basement, through a single driveway at the entrance. So the grounds are filled with colorful flower beds and gently swaying trees. And the homes seem to rise out of the greenery.

Amenities & Specifications:

- Garden
- Swimming Pool
- Play Area
- Recreation Facilities
- 24Hr Backup
- Maintenance Staff
- Security
- Intercom
- Club House
- Library
- Gymnasium.

Features

Luxury Features

- Power Back-up ■ RO System ■ Water Softner

Lot Features

- Private Terrace ■ Balcony

Exterior Features

- Reserved Parking

Maintenance

- Maintenance Staff ■ Water Supply / Storage
- Rain Water Harvesting ■ Waste Disposal

Land Features

- Society Boundary Wall
- Feng Shui / Vaastu Compliant
- Club / Community Center ■ Adjacent to Main Road
- Water Connection ■ Electric Connection
- Close to Hospital ■ Close to School
- Close to Shopping Center/Mall

Security Features

- Security Guards ■ Electronic Security
- Intercom Facility ■ Fire Alarm

Interior Features

- Woodwork ■ Modular Kitchen
- Feng Shui / Vaastu Compliant

Recreation

- Swimming Pool ■ Park ■ Fitness Centre / GYM
- Club / Community Center

Commercial Features

- Cafeteria / Food Court

Other features

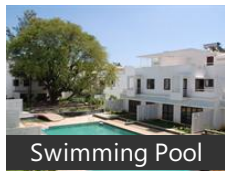
- Society Name: Rohan Ashima
- Possession: Immediate ■ Ownership: Freehold
- Age of Property: Less than 5 Years

Gallery

Pictures



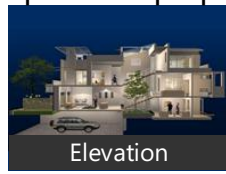
Aerial View



Swimming Pool



Kid's Pool



Elevation



Front View



Garden



Fountains



Side View



Closer View

Floor Plans



Location Map

Location

Landmarks

Transportation

Airport Authority Of India (<2km), Airport City Hospital Bangalore (<3k... Airport Lions Club Hospital (<3km), Airport Road (<4km), Varthur Road/Airport Road (<4km), Airport Road (<6km), Airport Police Station (<7km), Bangalore Airport (<9km), Towards Airport And Hosur (<9km), Belandur Rd Railway Station (<4km), Bellandur Road Railway Station (<5km Belandur Road Railway Station (<5km. Taxi Board (<3km), Bmtc Bus Depot (<3km), Shwetasa Karthik Nagar Bus Stop (<4k.. Rajapalya Bus Stop (<5km), Doddanekundi Last Bus Stand (<5km.. White Field Bus Stop (<5km), Hoody Bus Stop (<5km), Itpl Bus Stop (<5km), Marathahalli Bus Stop (<5km), Varthur Circle And Main Bus Stop (<...

Markets & Shopping Malls

Cosmos Mall (<1km), Spencers Mall (<1km), Fab Mall (<2km), Itpb Mall (<4km), Sigma Grand Mall (<5km), Govinda Reddy Shopping Complex (... Kiadb Shopping Complex (<5km), Kiads Shopping Complex (<5km)

Banks & ATMs

State Bank Of India Sbi Kundanahalli... Andhra Bank Atm (Outside Dsr Sprin... Citibank Atm Kundalahalli (<2km), Icici Bank Atm Inside Ginger Hotel (P.. Bank Of Baroda Atm (Automatic Tell... Federal Bank Atm (<4km), Axis Bank And Atm (Earlier Called Ut... Ing Vysya Bank Atm Near Graphite In.. Citibank Atm Near Ifb Company (<4... Citi Bank Atm (<4km), State Bank Of India (<1km), Bank Of India (<3km), Alangar (<3km), State Bank Of Mysore (<4km)

Hotels & Guest Houses

Hotel Manjunatha (<1km), Hotel Pandian (<1km), Ganesh Dharshan Hotel (<1km), Hotel Mahalakshmi (<1km), Hotel Mark Boulevard (<2km), Ravis Group Of Hotels (<2km), Medical (<2km), Icici Bank Atm Inside Ginger Hotel (P.. Hotel Megha Saqarl (<4km), Hotel Nenapu (<4km), Gr Guest House (<4km)

Restaurants & Clubs

Dream Meadows Club (<2km), Ezone Club (<3km), Airport Lions Club Hospital (<3km), Whitefield Club (<5km),

Hudi Sports Club (<5km), Amsa Club Swimmingpool (<6km), Annapoorna Restaurant (For Instant ... Country Side Restaurant (<2km), Ada Restaurant And Jalwa Bar (<3km.. Malabar Coast- Kerala Restaurant (<4.. Civet (<4km), Bindu Sagar Restaurant (<4km), Srinidhi Andhra Restaurant (<4km), Malgudi (<4km), Bharathi Restaurant (<4km), Bhagini Restaurant (<4km)

Movie Halls

Innovative Multiplex Cinema Hall (<4.. Tulsi (<4km), Srinivasa (<5km), Vijayalakshmi Cinema (<6km), Vijayalakshmi Cinema Hall (<6km)

Hospitals & Clinics

Karunashraya Cancer Hospital (<2km.. Vydehi Instuite Of Medical Sciences A. Saibaba Hospital (<3km), Sathya Sai Hospital (<3km), Sri Sathya Sai Super Speciality Hospit... Sathya Sai Hospital And Ashram Whi... Airport City Hospital Bangalore (<3k... Sri Satya Sai Hospital And Higher Me... Airport Lions Club Hospital (<3km), M.G.A. Hospital (<4km), Sathya Clinic (<1km), Hema Poly Clinic (<2km), Srinivas Clinic (<3km), Shiva Prema Clinic (<3km), Sri Sai Poly Clinic (<4km), Drs.Jayakumar Lakshmi Clinic (<5km... Kamala Nethralaya And General Clin... Sai Clinical Laboratory (<5km), Veterinary Hospital (<5km), Ogrady Health Center (<5km)

Offices

Hindustan Lever Brookfields Office (<. Our Favourite Principal Cynthia Maa... Foyer Group Office-111/1 Opp Sbi Br... Post Office (<1km), Kundalahalli Post Office (<1km), Prime Realtors Main Office (<1km), Diptis Office (<1km), Ifb Laundry (1st Floor) (<1km), Prime Realtors Branch Office And Cy... Mobisy Office (<2km)

Schools & Colleges

Bhavana Finished Her Mba In This Co. Redemotoris Mater College (<3km), Dr. Syamala Reddy Dental College (<... New Horizon College Of Engineering.. 477 (<5km), Mvj College Of Education (<5km), Venkatesh Tch Training College For W Nunus College (<6km), Ryan International Public School (<1... Ryan International School (<1km), The Royal School Play Gound (<1km), Royal English School (<1km), Brilliant School (<1km), Simis School (<1km), Guruku School (<2km), M T M School Property (<2km), Royal School (<3km), Grameen Vikas School (<3km)

Parks

Kempton Park (<1km), So Called Children Park (<1km), Green Orleans Tech Park (<2km), Netra Tech Park (<2km), Adarsh Akarsh It Park (<2km), Hinduja Park (<2km), Ibc Park Ionidea Interactive P Ltd (<3... Prasad Technology Park (<3km), Shailendra Techno Park (<3km), Sjr I-Park (<3km)

* All distances are approximate

Properties

Type	Area	Possession	Price *
2BHK Apartment / Flat	1328 SqFeet	-	₹ 85 lakhs
3 Bedroom Independent House	1850 SqFeet	-	₹ 1.7 crore
4 Bedroom Independent House		-	₹ 3.5 crores

* Data has been collected from publicly available sources and may not be up to date.

Rohan Ashima News

Expert Reviews on Rohan Ashima

Explore

[Projects in Bangalore](#)

[Brokers in Bangalore](#)

More Information

Report a problem with this listing

Is any information on this page outdated or incorrect?

[Report it!](#)

Disclaimer: All information is provided by builders, advertisers, or collected from publicly available sources and may not be verified as per RERA guidelines. Any information provided on this website, including facts and figures, should be verified independently before entering into any transaction. PropertyWala.com is only an advertising platform to help connect buyers and sellers and is not a party to any transaction, nor shall be responsible or liable to resolve any disputes between them.

[PropertyWala.com](#) » [Bangalore Real Estate](#) » [Projects in Bangalore](#) » [Rohan Ashima - Brooke Field, Bangalore](#)