

1 Bedroom Apartment / Flat for rent in Poonamallee, Chennai

6,500



1BHK Available For Rent In Mangadu, Thangal, And Lakshmipuram

Mangadu, Poonamallee, Chennai - 600056 (Tamil Nadu)

- Area: 400 SqMeters ▼
- Bedrooms: One
- Bathrooms: One
- Floor: Ground
- Total Floors: Two
- Facing: North
- Furnished: Unfurnished
- Lease Period: 24 Months
- Monthly Rent: 6,500
- Rate: 16 per SqMeter **-90%**
- Age Of Construction: 3 Years
- Available: Immediate/Ready to move

Description

This spacious 1BHK apartment is now available for rent in three locations in Poonamallee : Mangadu, Thangal, and Lakshmipuram. Each location offers convenient access to various amenities and facilities, ensuring a comfortable living experience for residents.

Please mention that you found this ad on PropertyWala.com when you call.

Location

* Location is approximate

Locality Reviews

Poonamallee, Chennai

Poonamallee is fast growing suburb in Chennai, and it is consider the gate way for connecting to Anadhra and Karnataka.

Pros:

- Fast development
- Metro rail connectivity proposed
- Close proximity to ring roads

Cons:

- Most congested
- Need better civic developments

Posted: May 2, 2022 by [Vijaykumar swaminathan \(Svk Realtors\)](#)

Well developed area. School and colleges are nearby. Good connectivity. All food provisions are available.

Pros:

- Good connectivity
- Pleasant climate
- Good connectivity

Cons:

- Crowded area

Posted: Mar 13, 2019 by [Ponniah Arumugam \(Padma Reality\)](#)

Poonamallee can be roughly translated to mean "the place where jasmine grows". The locality has an equally rich cultural heritage with a number of temples and legends. The social infrastructure in this area envelops a number of good hospitals, clinics, nursing homes, and doctors' chambers. Armed with strong healthcare infrastructure and educational institutes, like St. John's International Residential School, Sundar Matriculation School, Chennai Public School, Holy Crescent Matriculation School, Saveetha Dental College, and SA Engineering College, Panimalar Engineering Collage etc. Poonamallee is all set to become a big realty hub in the future. One of the winning features of this locality is its smooth transport system. The most popular mode of public transport here are the buses, both State-run and private. Auto-rickshaws

Advertiser Details

Dharmaraj M
Software Developer / Programmer

Poonamallee, Chennai
mob: 9677028320
tel: 9150012454
mail:
www.propertywala.com/U16099999

Scan QR code to get the contact info on your mobile

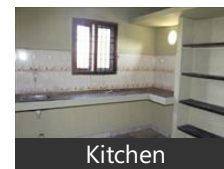
Pictures



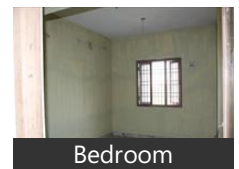
Main Entrance



Living Room



Kitchen



Bedroom



Elevation

are the next most popular mode of travel.

Pros:

- *Good location*

Posted: Apr 21, 2016 by [kalaivani R \(Tirupatiyar Groups\)](#)

Poonamallee, a suburb in south Chennai, has recorded a huge appreciation in the residential property segment in the past few months. Excellent connectivity, proximity to IT hubs and availability of well-developed infrastructure have ensured that in spite of being a commercial hub originally, Poonamallee is receiving its fair share of residential demand as well. "Exorbitant prices in Anna Nagar and Porur have resulted in the demand for residential housing shifting towards Poonamallee which is situated close to these localities yet within the affordable range.

Pros:

- *Best Location*

Posted: Dec 9, 2015 by [oviya raj \(Ganesh Sundaram Builders\)](#)

Poonamallee is a nice place to live in. Poonamallee is a calm and quiet place. It is having good connectivity. Transportation is good in this area. Plenty of share auto is also available over here. Surrounded by schools, colleges, temple's. Market and hotels are very near by. No traffic jam. No water problem. Nice place suitable for bachelor's, couples, family and for all.

Pros:

- *Plenty of buses*
- *Near by college Hotel*
- *Near by bus stand, market, Temple*

Cons:

- *No train facilities*

Posted: Oct 26, 2014 by Narayanan V

Poonamallee new layout for near TNHB satellite township. Fully furnished area. Many manufacturing industries are located here.

Pros:

- *Satellite township on road side*
- *No negativity as poonamallee is a fast devoleping suburb in chennai*

Posted: Jul 16, 2014 by Karthik krishnan

Poonamallee is the best locality and very well connected to Aurora and easy access to the city via an NH-4 express way. Educational institutions, health care facilities and entertainment centers are just around. Poonamallee is a nice and peaceful residential locality to stay.

Pros:

- *Good living atmosphere*

Posted: Oct 3, 2013 by [Tharan R \(Rich India Housing\)](#)

Very good location and many manufacturing industries are located here. Many colleges and international schools, two entertainment theme parks are here. Irukattukotai Sipcot is located here.

Pros:

- *1500 manufacturing companies*
- *Chennai to Bangalore highways connected to Sriperumputhur*
- *Irukattukotai Sipcot is located here*

Posted: Aug 31, 2013 by [Prince George \(Crescentz Homes And Infrastructure\)](#)

The town of Poonamallee is situated at a distance of 23 kilometres from Fort St George and 17 kilometres from Sriperumbudur on the Chennai-Bangalore highway. It is located at the end of the Mount-Poonamallee Road, 11 kilometres from Guindy and 13 kilometres from Chennai Mofussil Bus Terminus on the Chennai bypass. The nearest railway station is at Avadi which is nine kilometres away. It is also an important halting point for buses starting from Chennai Mofussil Bus Terminus and going towards Tirupati, Kanchipuram, Vellore etc.

Pros:

- *Halting point of Chennai Mofussil Bus*
- *Industrial Area with many car companies, showrooms and service centers*
- *Nearest satellite town for Chennai city*

Cons:

- *Traffic in the peak hours*
- *No shopping mall*
- *Slightly outer to city environment*

Posted: May 15, 2013 by [Pugazhenth Thangavellu \(Sri Ranjana Builders\)](#)

Poonamallee, Chennai is rated 7 out of 10 based on 9 user reviews.

Disclaimer: The reviews are opinions of PropertyWala.com members, and not of PropertyWala.com.

Explore

[Similar Properties](#)

[Properties in Poonamallee, Chennai](#)

[Projects in Chennai](#)

[Brokers in Chennai](#)

More Information

Report a problem with this listing

Is this property no longer available or has incorrect information?

[Report it!](#)

Disclaimer: All information is provided by advertisers and should be verified independently before entering into any transaction. You may visit the relevant RERA website of your state to verify the details of this property. PropertyWala.com is only an advertising platform to help connect buyers and sellers and is not a party to any transactions, nor shall be responsible or liable to resolve any disputes between them.