

## 2 Bedroom Apartment / Flat for sale in Moshi, Pune

45 lakhs



### 2 Bedroom Apartment For Sale In Pune SIDDHI SKYLARK, MOSHI ALANDI ROAD NEAR BHARAT..

- Area: 705 SqFeet ▼
- Bedrooms: Two
- Bathrooms: Two
- Floor: Third
- Total Floors: Eleven
- Facing: East
- Furnished: Unfurnished
- Transaction: New Property
- Price: 4,500,000
- Rate: 6,383 per SqFeet +10%
- Age Of Construction: Under Construction
- Possession: Immediate/Ready to move

### Advertiser Details

**Dream Housing**  
Mahesh Babar

Punawale, Pune  
mob: 7559456169  
tel: 9067696972  
mail: dreamhousing360@gmail.com  
www.propertywala.com/dream-housing-pune

Scan QR code to get the contact info on your mobile  
[View all properties by Dream Housing](#)

### Description

Siddhi Skylark is a project by Siddhi Constructions in Pune. It is a Under Construction project. Siddhi Skylark offers some of the most conveniently designed Apartment. Located in Moshi, it is a residential project. The project is spread over 0.36 Acres . It has 35 units. There is 1 building in this project. Siddhi Skylark offers some of the most exclusive 2 BHK. As per the area plan, units are in the size range of 701.0 - 705.0 sq.ft.. Launched in October 2022, Siddhi Skylark is slated for possession in Sep, 2024. The address of Siddhi Skylark is Moshi.

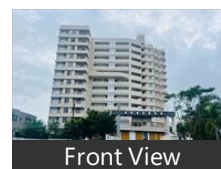
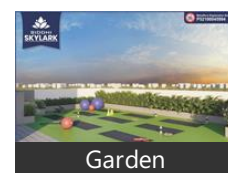
Siddhi Skylark ensures a coveted lifestyle and offers a convenient living. It offers facilities such as Power Backup. There is provision for Closed Car Parking.

The project is RERA approved. For details, check RERA ID P52100045994.

The firm has since then developed 3 projects and focuses on customer-centricity.

Moshi is well-connected to other parts of city by road, which passes through the heart of this suburb. Prominent shopping malls, movie theatres, school, and hospitals are present in proximity of this residential project.

### Pictures



Please mention that you saw this ad on PropertyWala.com when you contact.

### Location

\* Location may be approximate

### Landmarks

Nearby Localities

[Moshi Gaon](#)

\* All distances are approximate

### Locality Reviews

Moshi, Pune

Moshi is getting a Hot Pocket with Woods Ville by Pranjape Bldr and Princiville by Kumar Bldr and many other Good Properties.

High Court and COEP College coming in near future in the vicinity..

#### Pros:

- Easy Access to Tathavade IT Park

Posted: Apr 19, 2020 by Bhupesh Patel

Moshi is fast developing where MIDC Working engineers as well as Software working engineers are residing at a very low cost. Dmart shopping mall, INTERNATIONAL School are just on walkable distance

**Pros:**

- *Affordable Rate*
- *No Traffic*
- *Low Pollution*

Posted: Dec 17, 2019 by Pavnesh Sharma

Most Promising & Developing Area in PCMC with all the Infra. Ready to use.  
Ideal for a Middle class family - IT professionals, Mechanical Enggs.

**Pros:**

- *Good For Middle & Higher Middle Class Families*
- *Good Approach to all the main Roads*
- *Schools, Colleges, Industry & BRT Road within reach*

Posted: Nov 2, 2016 by Ashutosh Devhare

Moshi is located on Pune-Nashik highway, very good air ventilation and free flowing air due to very less tower buildings.  
Very relaxed place to stay. Wide roads in pradhikaran area and very close to industrial hubs like Chakan & Bhosari MIDC.

**Pros:**

- *Wide roads in pradhikaran area.*
- *Close to industrial hubs like Chakan & Bhosari MIDC.*
- *Very relaxed place to stay.*

**Cons:**

- *Away from main Pune city.*

Posted: Jun 7, 2013 by Shailesh Wader

Moshi, Pune is rated 9 out of 10 based on 4 user reviews.

Disclaimer: The reviews are opinions of PropertyWala.com members, and not of PropertyWala.com.

Explore

[Similar Properties](#)

[Properties in Moshi, Pune](#)

[Projects in Pune](#)

[Brokers in Pune](#)

More Information

Report a problem with this listing

Is this property no longer available or has incorrect information?

[Report it!](#)

**Disclaimer:** All information is provided by advertisers and should be verified independently before entering into any transaction. You may visit the relevant RERA website of your state to verify the details of this property. PropertyWala.com is only an advertising platform to help connect buyers and sellers and is not a party to any transactions, nor shall be responsible or liable to resolve any disputes between them.