

GM Meena Paradise - Kaikhali, Kolkata



Wide space with proper ventilation

GM Meena Paradise is presented by GM Group at Kaikhali, Kolkata offers residential project that hosts 2 & 3 BHK apartment with good features

- Project ID: J118958791
- Builder: GM Group
- Location: GM Meena Paradise, Kaikhali, Kolkata - 700136 (West Bengal)
- Completion Date: Aug, 2019
- Status: Completed

Description

GM Meena Paradise by GM Group located at Kaikhali, Kolkata. The project is spread over 820 - 1360 sq.ft. comprising of 2 and 3 bhk apartments. The project is equipped with key amenities including cctv camera, community hall, children's play area, gymnasium, indoor games etc & well connected with other parts of city and has all the basic utilities nearby.

RERA ID : HIRA/P/NOR/2019/000346

Amenities:

- 24Hrs Water Supply
- Basement Car Parking
- CCTV Cameras
- Community Hall
- Covered Car Parking
- Earthquake Resistant
- Gym
- Indoor Games
- Landscaped Garden
- Lift
- Play Area
- Rain Water Harvesting
- Security Personnel
- Waste Disposal

GM Group in the year 1984 in the city of Kolkata, G. M. Group has strive to achieve excellence in the field of construction, real estate, and construction management. since its inception G. M. Group has given the best value and quality to its clients.

Features

Luxury Features

- Power Back-up ■ Lifts

Maintenance

- Water Supply / Storage

Land Features

- Water Connection ■ Electric Connection
- Close to School ■ Close to Shopping Center/Mall

Recreation

- Park ■ Fitness Centre / GYM
- Club / Community Center

Commercial Features

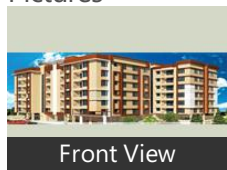
- ATM

Other features

- Possession Aug 2021 ■ Under Construction property
- Society: GM Meena Paradise

Gallery

Pictures



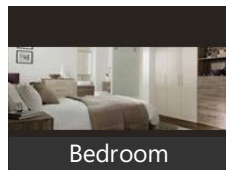
Front View



Elevation



Aerial View



Bedroom

Floor Plans



Master Plan



Floor Plan A



Floor Plan B



Floor Plan C



Floor Plan D



Location Map

Location

Landmarks

Hotel

Hotel Heritage (<4km), Pride Plaza Hotel Kolkata (<9km), Swissotel Kolkata (<3km), Hotel O2 VIP (<2km), Senses Hotel (<10km), Airport City Hotel (<3km), Indismart Hotel (<11km), Sushama Guest House (<9km), Swagatam Inn (<5km), Novotel Hotel Kolkata (<9km), Pipal Tree Hotel-Kolkata (<3km), Aquatica Resort (<12km), Host International Hotel (<4km), O2 Hotel (<3km), Om Lodge-Dum Dum (<3km), THE VEDIC VILLAGE SPA RESORT-KO... Cafeteria Sher-E-Punjab (<6km), Orbit Hotel-Raghnathpur (<4km), Coral Residency (<8km), The Sojourn (<12km)

Shopping Centre

City Centre-New Town (<3km), Diamond Plaza Mall (<6km), CITY CENTRE (<10km), Axis Mall (<9km), CK Market (<9km), Mani Square (<12km), Nimta Mahendra Babu Bazar (<8km), Amp Baisakhi Mall (<7km), Bangur Avenue Super Market (<8km), FB Market (<11km)

Public Transport

Biman Bandar Railway Station (<2km.. Dumdum (<9km), Nagar Bazar Bus Station (<6km), Kaikhali-45-Bus Stations (<2km), Karunamoyee Bus Station (<9km), WBSTC Bus Station (<9km), KOLKATA RAILWAY STATION (<11km Bidhan Nagar Road (<11km), Netaji Subhash Chandra Bose Interna.. Durga Nagar (<5km), Calcutta State Transport Corporation... Belgharia (<9km), Madhyamgram (<9km), Sodpur (<14km), SHYAMBAZAR METRO STATION-GA.. Dumdum Cantonment (<5km), Patipukur (<9km)

Recreation

Eco Tourism Park (<6km), Inox-City Centre (<2km), Inox-City Centre Saltlake (<10km), RDB Cinemas-Salt Lake (<11km), Jaya Cinema (<8km), Carnival Cinemas (<11km), Aquatica-Main Gate (<12km), PVR Cinemas-Diamond Plaza (<6km), Central Park (<12km), Swabhumi East Gate (<13km)

Hospitals & Clinics

Apollo Medico (<4km), Renaissance Hospital (<3km), TATA Medical Centre (<11km), IIS Hospitals (<9km), Apollo Hospital (<12km), Columbia Asia Hospitals (<12km), Apollo Gleneagles Hospitals (<12km)

Building

Eco Friendly Non It Business Park (<7.. Arnab (<6km), Lokenath Park (<3km), Siddha Town (<2km), NBCC Vibgyor Towers (<9km), Haldiram Enclave (<3km), Rail Vihar Gate No-2 (<8km), Karmakar (<8km), Akanksha (<4km), Lake Town Block-A (<9km), Ramesh Apartment (<4km), Ramkrishna Seva Niketan (<8km), Akota Apartment (<10km), Sourav Ganguly Avenue (<1km), Uniworld City (<13km)

Business & Services

Bikash Bhawan (<9km), Technopolis (<9km), DLF It Park (<9km), City Centre Salt Lake (<10km), SDF Building (<11km), Infospace (<11km)

Museum

Mother

ATM/Bank/Exchange

Indusind Bank (<2km), State Bank of India (<8km), HDFC Bank (<8km), Indian Overseas Bank (<6km), State Bank of India-Terminus Buildin...

Restaurant & Shops

Blackberry (<3km), Jammu & Kashmir (<11km), Raja Rani (<6km), Big Bazaar (<11km), Bidyapith (<5km), Howrah-Sealdah (<12km), Pantaloons (<13km)

Landmark/Attraction

Dakshineswar Kali Temple (<13km), Kali Mandir (<6km)

* All distances are approximate

Properties

GM Meena Paradise News

Expert Reviews on GM Meena Paradise

Explore

[Projects in Kolkata](#)

[Brokers in Kolkata](#)

More Information

Report a problem with this listing

Is any information on this page outdated or incorrect?

[Report it!](#)

Disclaimer: All information is provided by advertisers, including builders/agents/owners, or collected from publicly available sources and may not be verified under RERA. Any information provided on this website, including facts and figures, should be verified independently, including via the relevant RERA website, before entering into any transaction. PropertyWala.com is only an advertising platform to help connect buyers and sellers and is not a party to any transaction, nor shall be responsible or liable to resolve any disputes between them.

[Home](#) » [Kolkata Real Estate](#) » [Projects in Kolkata](#) » [GM Meena Paradise - Kaikhali, Kolkata](#)