

## Warehouse / Godown for rent in Bommasandra, Bangalore

14 lakhs



### Warehouse/ Godown For Rent At Bommasandra / Jigani / Hosur Road

Bommasandra - Jigani, Industrial Area, Link Road, Attibe...

- Area: 70000 SqFeet
- Bathrooms: Eight
- Floor: Ground
- Total Floors: One
- Facing: North East
- Furnished: Semi Furnished
- Lease Period: 24 Months
- Monthly Rent: 1,400,000
- Rate: 20 per SqFeet -5%
- Age Of Construction: 2 Years
- Available: Immediate/Ready to move

### Advertiser Details

**F5K Realty**  
Feroz Khan  
Director  
HBR Layout, Bangalore  
mob: 7892210005  
mail: f5krealty@gmail.com  
tel: 8105299975  
www.propertywala.com/f5k-realty-bangalore

Scan QR code to get the contact info on your mobile  
[View all properties by F5K Realty](#)

### Description

**Warehouse / Godown Space for Rent At Bommasandra , Jigini, Bommasandra - Jigani Link Road, Bommasandra Industrial Area , Jigini Industrial Area, Attibele Road , Anekal , Road, Bommanahalli , Electronic City , Hosur Road , Hosur , Bannerhatta Road, Bommasandra Bangalore for which Rent is negotiable.**

This Warehouse / Godown is close to Main Road, with facility for labor nearby, close to hospitals, bus stand, police station, fire brigade, access to transport with plenty of parking for trucks & 40ft containers.

Facilities toilets for labours, office with attached washroom. Vdf flooring, canopy done. Facility for crane, 4ft dock with dock leveller provision, lighting arrestor, fire hydrant with sprinkler facility if required. Turbo Ventilators, exhaust, natural lighting, back up, power, borewell water facility,

New construction, security room, labor room, drivers rest room, close gated 10ft compound wall with 3ft above barewire, cement Roads all around with drainage systems.

When you call, please mention that you saw this ad on PropertyWala.com.

### Features

#### General

- Power Back-up
- Room AC
- High Speed Internet
- Wi-Fi

#### Lot

- Corner Location
- Park Facing

#### Recreation

- Park

#### Other features

- Hi Tech Warehouse
- Latest Amenities
- International Standard
- Fire Compliance
- Fire Hydrant Facility
- Sprinklers Provision
- Natural Lighting
- Dock Leveller Provision
- Lightning Arrestor Installed
- VDF Flooring
- Compound Wall
- Fully Covered Canopies
- Concrete Roads
- Air Exhaustors
- Ramp Facility
- Internal LED Lights
- Ample Truck Parking Space

### Location

#### Security

- Security Guards
- Electronic Security
- Intercom Facility
- Fire Alarm

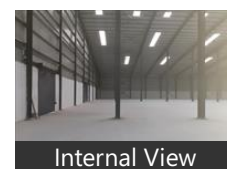
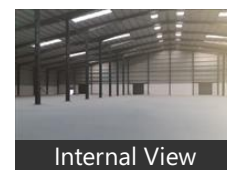
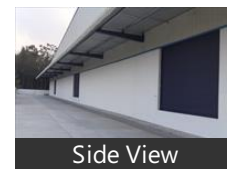
#### Exterior

- Reserved Parking
- Visitor Parking
- Servant Quarter

#### Maintenance

- Maintenance Staff
- Water Supply / Storage
- RO System
- Water Softner
- Boring / Tube-well
- Rain Water Harvesting
- Waste Disposal

### Pictures



\* Location may be approximate

## Landmarks

### Hotel

Radha Regent Bengaluru (<6km), Lemon Tree Hotel Electronics City Be.. Manipal County (<12km), Sai Vishram Business Hotel (<3km), Oyo 10885 Hotel Keerthana Internatio. Mango Mist Resort-Jigani (<13km), Lords Plaza Electronic City Bangalore.. Keys Hotel-Hosur Road (<13km), Ramee Guestline Hotel Bangalore (<...

### Business & Services

Biocon (<3km), Land Maark (<4km), HCL Technologies (<6km), Siemens Technology & Services (<6k.. Micro Labs (<5km), Stericon Pharma-Main Entrance (<4k.. Bangalore Sales Corporation (<6km), Sfo Technologies-Main Gate (<5km), Valspar India Coatings Corporation-... Mersen India (<3km), Biocon Park-Gate 1 (<6km), Southern Batteries (<3km), Microcon I2i (<3km), Nordson India (<4km), Danish Steel Cluster (<8km), Nash Industries (<5km), Geltec (<10km), Decathlon Sports India (<13km), Festo (<1km), Switchgear and Control Technics (<1.. Jigani Village& Industrial Area (<12km Titan Industries (<3km), MTR Foods-Gate 4 (<3km), Ontop Pharmaceuticals-Main Entran... Rishi Laser-Main Entrance (<5km), Veerasandra Kssidc Industrial Estate (... Ipc Packaging Co Unit-6 (<5km), Newfield Engineers (<5km), Moog (<5km), Apotex Research-Gate 3 (<6km), Sobha Interiors (<6km)

### Recreation

DECATHLON (<1km), Cycle World (<11km)

### Public Transport

Kengeri Bmtc Bus Depot (<4km), Bmtc Bus Depot 19-Electronic City (<.. BMTc Bus Stand-Wipro (<7km), Hosa Road (<11km), Narayana Hrudayalaya (<1km), Attibele Bus Station (<13km), Hebbagodi (<3km)

### Hospitals & Clinics

Snarsh Hospital (<1km) Chakra Hospital (<2km) Narayana Nethralaya Eye Hospital (<

[more...](#)

## Locality Reviews

Bommasandra, Bangalore

Well developed area. Good connectivity with Electronic city just 2 km away.

Posh Locality. Schools and shopping complexes are nearby.

#### Pros:

- Well developed area
- Good connectivity
- Posh locality

#### Cons:

- Industrial Area
- Traffic congestion

Posted: Mar 31, 2019 by Pallavi B

Bommasandra is an industrial area. It is the second biggest industrial area after Peenya. It is well connected, well developed, fastest growing Industrial area. Just 2 km from Electronics city, 2 km from Narayana Health City. Its on NH. Bus facility is fantastic & very frequent. All MNC's located. Very good roads & good locality.

#### Pros:

- Well developed
- Availability of good shopping centers, stores, cinema halls, schools
- Well Connected with City

#### Cons:

- No traffic management

Posted: Mar 19, 2015 by G Rayabagi

Bommasandra area is a good place for all property buyers and renters because it is very near to electronic city it hub of Bangalore 3 km. There is a link road from Bommasandra to Jigani which is another industrial area so two industrial area connected well. Very near to Hosur and no traffic area. Companies like Biocon, Skf, Apotex etc reside here.

#### Pros:

- Near to Electronic city
- Well Planned Area
- Low Price and Best Place

#### Cons:

- Road are not Proper need to be repaired
- Property Prices are Bit High
- Growth is Still Less

Posted: Dec 5, 2014 by Sreekanth g

It is a fast deveolping area situated close to Electronics city and Narayana hridayala hospital. Since it is on the highway of Hosur- Chennai, it is really developing well and becoming a hot residential spot.

#### Pros:

- It is developing fast
- It is connected to the city with the fly over
- Schools and shopping malls coming up

#### Cons:

- It is an industrial area
- Development is not complete yet
- Metro connectivity is not there

Posted: Nov 14, 2013 by Chandrashekhar sivasankaran

Bommasandra, Bangalore is rated 6 out of 10 based on 4 user reviews.

Disclaimer: The reviews are opinions of PropertyWala.com members, and not of PropertyWala.com.

Explore

[Similar Properties](#)

[Properties in Bommasandra, Bangalore](#)

[Projects in Bangalore](#)

[Brokers in Bangalore](#)

More Information

Report a problem with this listing

Is this property no longer available or has incorrect information?

[Report it!](#)

**Disclaimer:** All information is provided by advertisers and should be verified independently before entering into any transaction. You may visit the relevant RERA website of your state to verify the details of this property. PropertyWala.com is only an advertising platform to help connect buyers and sellers and is not a party to any transactions, nor shall be responsible or liable to resolve any disputes between them.