

Home » Ernakulam Properties » Commercial properties for rent in Ernakulam » Multipurpose Buildings for rent in Edapally, Ernakulam » Property P994752902

## Multipurpose Building for rent in Edapally, Ernakulam

45,000



★ Featured

### Multipurpose Building For Rent In Ernakulam

H5 Govt HS Road Near Changampuzha Metro Station, E...

- Area: 1200 SqFeet ▾
- Bathrooms: Four
- Floor: First
- Total Floors: Two
- Facing: East
- Furnished: Semi Furnished
- Lease Period: 60 Months
- Monthly Rent: 45,000
- Rate: 38 per SqFeet **+30%**
- Age Of Construction: 14 Years
- Available: Immediate/Ready to move

### Advertiser Details

**Nandakumar K**

Mechanical / Production Engineer

Edapally, Ernakulam

mob: 8848877072

tel: 9744766503

mail:

[www.propertywala.com/U29842893](http://www.propertywala.com/U29842893)



Scan QR code to get the contact info on your mobile

### Description

Multipurpose Building for Rent in Ernakulam

Features:

- Direct from the owner
- No brokerage
- Deposit: 3 months
- Term: 5 years or more
- RO water system
- Close to National Highway
- All amenities nearby
- Located at the center of the city with access to wide public roads
- Rent 45k/month (negotiable)
- Deposit: 3 months
- Car and two-wheeler parking available
- Major hospital, offices, and showrooms nearby

Don't forget to mention that you saw this ad on PropertyWala.com, when you call.

### Location

### Pictures



Main Entrance



Front View



Main Entrance



Elevation



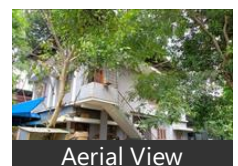
car parking



Aerial View



Aerial View



Aerial View

\* Location may be approximate

### Landmarks

Nearby Localities

[Kaloore](#), [Ernakulam North](#), [Vaduthala](#), [Vennala](#), [Kathrikadavu](#)

\* All distances are approximate

### Locality Reviews

Edapally, Ernakulam

Edapally is the main part of kochi. Lulu mall is attractive place. Many projects are going on here. Please call us and book your space

**Pros:**

- ITS NICE MEDIA AND GETTING GENUINE CUSTOMER

**Cons:**

- SOME TIMES COMPLICATED

Posted: Nov 20, 2018 by [Sabu Vg \(Better Homes Kochi\)](#)

It's the new heart of the Kochi City connecting all major locations with all amenities - Schools, Hospitals, Markets, Malls, Petrol Bunks etc.

**Pros:**

- *Schools, market, Lulu Mall, Petrol Bunk, Hospitals around*

Posted: Jun 10, 2017 by Anil Das

Edapally provides easy access to the city, port and airport. All highways in Cochin meets at Edapally effectively making it a hub

**Pros:**

- *Well developed area*

Posted: Jul 20, 2015 by Nabeel MS

Edapally is the near place to Cochin city, largest mall in India (lulu mall) amrita institute medical science one and med city are international level hospitals in Cochin city, Amritha school, al-ameen school, Rajagiri school and college, cusat. Edapally is fully educational city, with good location.

**Pros:**

- *With in half km get every facilities.*

Posted: Aug 17, 2014 by Anoop Aravind

Edapally, Ernakulam is rated 8 out of 10 based on 4 user reviews.

Disclaimer: The reviews are opinions of PropertyWala.com members, and not of PropertyWala.com.

Explore

[Similar Properties](#)

[Properties in Edapally, Ernakulam](#)

[Projects in Ernakulam](#)

[Brokers in Ernakulam](#)

More Information

Report a problem with this listing

Is this property no longer available or has incorrect information?

[Report it!](#)

**Disclaimer:** All information is provided by advertisers and should be verified independently before entering into any transaction. You may visit the relevant RERA website of your state to verify the details of this property. PropertyWala.com is only an advertising platform to help connect buyers and sellers and is not a party to any transactions, nor shall be responsible or liable to resolve any disputes between them.