

## Mahaveer Sitara - JP Nagar Phase 7, Bangalore



perfect home that suits your aspirations and lifestyle

Mahaveer Sitara by Mahaveer Group at JP Nagar-7 in Bangalore offers residential project that host 2 , 3 and 4 bhk apartment in various sizes.

- Project ID: J918966431
- Builder: Mahaveer Group
- Location: Mahaveer Sitara, JP Nagar Phase 7, Bangalore (Karnataka)
- Completion Date: Dec, 2020
- Status: Started

### Description

**Mahaveer Sitara** is one of the promising residential development by Mahaveer Group. The project offers spacious and skillfully designed 2 , 3 and 4 bhk duplex apartments in the size ranges in between 1434 to 2440 sqft. The project is well equipped with all the basic amenities and security to facilitate serene life for the residents. The project is located at JP Nagar 7 in bangalore is your ultimate destination for blissful living with fun, laughter and happiness.

**RERA No :-** PRM/KA/RERA/1251/310/PR/171019/000671

### Amenities :

- Power Backup
- Landscaped Gardens
- Rain Water Harvesting
- Swimming Pool
- 24 X 7 Security
- Staff Quarter
- Jogging Track
- Shopping Mall
- School
- Hospital
- ATM
- Closed Car Parking
- Gymnasium
- Children's play area
- Multipurpose Room
- Sports\_Facility
- Intercom
- Lift\_Available
- Badminton Court
- Basketball Court

**Mahaveer Group** is a flagship initiative of Reddy Structures. It is an ISO 9001:2015 certified company and has built an inimitable reputation for itself for successfully delivering several prestigious projects in the southern states of India. Company's portfolio includes residential properties such as villas, plots and apartments. It believes in building a lasting relationship with the customers and providing them clear and personalized advice on all areas of the property.

### Features

#### Luxury Features

- Power Back-up ■ Lifts ■ High Speed Internet

#### Lot Features

- Balcony ■ Park Facing

#### Recreation

- Swimming Pool ■ Park ■ Fitness Centre / GYM
- Club / Community Center

#### Security Features

- Security Guards

#### Exterior Features

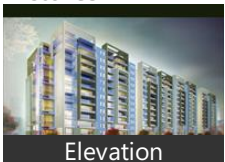
- Reserved Parking

#### Maintenance

- Maintenance Staff ■ Rain Water Harvesting

### Gallery

#### Pictures



Elevation

### Floor Plans



## Location

## Landmarks

### Hotel

Crystal Castle (<1km), ibis Bengaluru Hosur Road (<7km), OYO 1327 Inchara Hotel (<1km), Hotel Nandhini Jayanagar (<6km), Grand Mercure Bengaluru (<8km), Aurick Hotel (<2km), Hotel Empire International Koramang. Manipal County (<9km), Shetty Gardenia (<5km), La Marvella Bengaluru - A Sarovar Pr... Hotel Nandhini (<2km), S Hotel (<3km), Vaishnavi Residency (<2km), The Pride Hotel-Richmond Road (<1... The President Hotel (<6km), Springs Hotel & Spa (<10km), Edition O 30060 Koramangala Forum... The Grand Magrath (<12km), Nandhana Grand (<9km), Davanam Sarovar Portico Suites (<7k... The Ritz-Carlton Bangalore (<12km), HHI select (<2km), Ginger-Domlur Inner Ring Road (<12... The Leela Palace Bengaluru (<14km), Oyo 10135 Hotel Ecohaya (<5km), Oxford Inn Business Hotel (<13km), Radiant Resort (<8km), Fortune Park J P Celestial (<14km), The Oterra (<13km), JW Marriott Hotel (<12km), Church Street Social (<13km), Ramanashree Brunton Road (<13km), The Grand Continent-J P Nagar (<3k...

### Recreation

Brigade Millennium-Park Puttenahal... Maheshwari Theatre (<5km), Quechua Decathlon Bannerghatta (<... Renuka Prasanna Theatre (<3km), The Woodrose (<0.5km), Galaxy Paradise Digital Cinema (<6km), Lakshmi Theatre (<6km), Inox-Shree Garuda Swagath Mall (<6... Kamakya Cinema-Banashankari (<7k... Srinivasa Theatre (<7km), Manasa Theatre (<4km)

### Building

Elita Promenade (<1km), GR Lavender (<2km), Jayanthi Garden (<3km), South City-Main Gate (<1km), Brigade Millennium-Magnolia (<1km), Himagiri Green Forest 7th Phase (<1k... Brigade Millennium-Laburnum (<1k... Vijaya Enclave Nethravathi Block ■■■, Brigade Gardenia (<1km), Sobha Tulip (<1km), Raja Aristos (<5km), Suvrith Soprano (<5km), SNN Raj Serenity-Main Entrance (<7k...

### Hospitals & Clinics

Apollo Hospitals (<2km), Sri Jayadeva Institute of Cardiovascu... Sagar Hospital Dsi (<4km), Sri Jayadeva Institute of Cardiovascu... Sagar Hospital (<6km), Aishwarya Castle (<6km), Mamatha Hospital (<4km), Cloudnine Maternal & Newborn Hos... Nimhans Hospital (<7km), Nethradhama Super-Speciality Eye H... Apollo Hospitals-ER (<2km)

### Shopping Centre

Royal Meenakshi Mall (<3km), Bangalore Central (<4km), Gopalan Innovation Mall (<4km), Shoppers Stop (<4km), Shri Garuda Swagath Mall (<5km)

### Public Transport

Banashankari Bus Station (<4km), JP Nagar 6th Phase-EB (<2km), Jayanagar 4th Block BMTC Bus Statio... Jayanagar 4th Block-NB (<5km), Bانشankari-NB (<4km), Central Silk Board (<7km), Tavarekere Bus Station (<6km), Mono Type (<5km), Koodlu Gate (<8km), Madiwala (<7km), Shanthi Nagar Bus Station (<9km)

### Restaurant & Shops

Bells & Candles (<4km), Sapna Book House (<6km), Shri Manjunatha Enterprises-HP Gas ... D Mart (<5km), Big Bazaar (<4km), Shankar Agencies (<2km), Sangeetha Telecom (<7km), Sycom Technologies-HP World (<6k...

Maiya

#### ATM/Bank/Exchange

Bank of Baroda-Bilekahalli Branch (<... Canara Bank (<2km)

#### Business & Services

BDA Shopping Complex (<6km)

#### Landmark/Attraction

Bull Temple (<8km)

#### Accommodation

Sri Balaji PG for Gents (<7km)

\* All distances are approximate

## Properties

## Mahaveer Sitara News

## Expert Reviews on Mahaveer Sitara

### Explore

[Projects in Bangalore](#)

[Brokers in Bangalore](#)

### More Information

### Report a problem with this listing

Is any information on this page outdated or incorrect?

[Report it!](#)

**Disclaimer:** All information is provided by advertisers, including builders/agents/owners, or collected from publicly available sources and may not be verified under RERA. Any information provided on this website, including facts and figures, should be verified independently, including via the relevant RERA website, before entering into any transaction. PropertyWala.com is only an advertising platform to help connect buyers and sellers and is not a party to any transaction, nor shall be responsible or liable to resolve any disputes between them.

[Home](#) » [Bangalore Real Estate](#) » [Projects in Bangalore](#) » [Mahaveer Sitara - JP Nagar Phase 7, Bangalore](#)