

Prestige Monte Carlo - Yelahanka, Bangalore



Luxurious residential 3 BHK apartments for Prestigious Living at Yelahanka New Town

Prestige Monte Carlo is one praiseworthy gift from Prestige Group to the humanity. The project is specially designed to make luxurious living a feeling.

- Project ID : J721190689
- Builder: Prestige Group
- Properties: Apartments / Flats
- Location: Prestige Monte Carlo, Yelahanka, Bangalore - 560064 (Karnataka)
- Completion Date: Jul, 2013
- Status: Started

Description

Prestige Group is a well known real estate group of South India. The spectacular constructions up to the standard and expectations of the people, world class facilities and amenities at the door step, etc. remain as their trademarks. With developments spanning across Residential, Commercial, Retail, Leisure & Hospitality sectors the group has shaped the skyline of South India. The Group has completed 163 Projects in style and has a handful more at hand. The group has received 15 Awards across various categories.

Prestige Monte Carlo is one praiseworthy gift of Prestige Group. This is specially designed to make luxurious living a feeling. The project is well adorned with amenities and facilities. Bringing international standards of living under one roof, the project becomes one of its kind. All accesses to the outer world and the daily needs are open to the people here at the doorstep.

Amenities

- Play Area
- Basket Ball Court
- Children's Park
- Jogging Track
- Garden
- Gym
- Community Center
- Club House
- Swimming Pool
- Indoor Games Facilities
- Pool
- Independent parking space
- Balconies
- 24 Hrs. Security: Electronic and man-power

Features

Luxury Features

- Power Back-up ■ Centrally Air Conditioned ■ Lifts
- RO System ■ High Speed Internet ■ Wi-Fi

Lot Features

- Balcony ■ Park Facing

Interior Features

- Woodwork ■ Modular Kitchen
- Feng Shui / Vaastu Compliant

Exterior Features

- Reserved Parking ■ Visitor Parking ■ Servant Quarter

Maintenance

- Maintenance Staff ■ Water Supply / Storage
- Boring / Tube-well ■ Rain Water Harvesting
- Waste Disposal ■ RO System ■ Water Softner

General

- Power Back-up ■ Room AC ■ Lifts
- High Speed Internet ■ Wi-Fi

Security Features

- Security Guards ■ Electronic Security
- Intercom Facility ■ Fire Alarm

Lot

- Basement

Interior

- Marble Flooring

Recreation

- Swimming Pool ■ Park ■ Fitness Centre / GYM
- Club / Community Center

Land Features

- Feng Shui / Vaastu Compliant
- Club / Community Center ■ Adjacent to Main Road
- Park/Green Belt Facing ■ Water Connection
- Electric Connection ■ Close to Hospital
- Close to School ■ Close to Shopping Center/Mall

Other features

- Age of Construction: 10 to 15 years ■ 3 balconies
- Power Back Up ■ Lift ■ Rain Water Harvesting
- Club House ■ Swimming Pool ■ Gymnasium
- Park ■ Reserved Parking ■ Security ■ Water Storage
- Private Terrace/Garden ■ Vaastu Compliant
- Service/Goods Lift ■ Air Conditioned
- Visitor Parking ■ Intercom Facility
- Maintenance Staff ■ Waste Disposal
- Laundry Service ■ Internet/Wi-Fi Connectivity

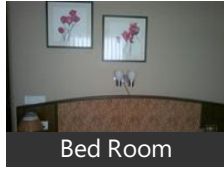
- DTH Television Facility ■ RO Water System
- Banquet Hall ■ Bar/Lounge ■ Cafeteria/Food Court
- Conference Room ■ Piped Gas
- Jogging and Strolling Track ■ Outdoor Tennis Courts
- Ready to Move ■ Puja Room ■ Furnished
- Freehold ownership ■ Garden/Park Facing ■ Study
- Store ■ Servant Room ■ Main Road Facing

Gallery

Pictures



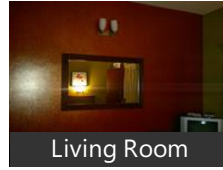
Front View



Bed Room



Side View



Living Room



Side View



Living Room



Meeting Room



Master Bed Room



Kitchen

Location

Landmarks

Transportation

Taxi Stand (<1km), Hindustan Airport (<26km), Yelahanka Railway Junction (<0.5km), Kodigehalli Railway Station (<7km), Bangalore City Junction Railway Stat... Yeshwantpur Railway Station Parking.. Cantonment Railway Station (<17km... Yesvantpur Junction Railway Station ... Hebbal Railway Station (<9km), Yelahanka Bus Stand (<0.5km), Kogilu Cross Bus Stop (<1km), Shivanahalli Bus Stop (<2km), www.allticketwala.com (<3km), Yelahanka Satellite Town Bus Station... Sharavathi (<2km)

Markets & Shopping Malls

Mantri Square (<17km), Garuda Mall (<21km), Big Bazaar (<9km), The Forum (<26km), Lido Mall (<20km), Brigade Enterprises (<15km), McDonalds (<15km), Grand Sigma Mall (<17km), cafe coffee day (<1km), BDA Shopping Complex (<2km), E shopping store (<3km), The Mobile Shop (<2km), Kanti Sweets (<3km), Reebok-Sahakarnagar (<6km)

Banks & ATMs

Corporation bank Atm (<1km), Axis Bank ATM (<1km), Icici Bank ATM (<1km), State Bank of India (<1km), Indian Bank (<1km), Indian Bank ATM (<1km), Indusind Bank ATM (<1km), Bank (<0.5km), Canara Bank Yelahanka Branch (<2km Axis Bank (<1km), B D C C Bank (<1km), Bank (<1km), The Karnataka State Co-operative Ap..

Hotels & Guest Houses

Boys PG in Yelahanka (<3km), Paying Guest Accomodation in Yelah.. PG in Yelahnaka (<3km), STARWOOD HOTELS (<17km), Sterling Gardens (<8km), Jayamaharal Palace Hotel (<16km), Akshara Regency (<12km), Casino Hotel (<12km), Royal Orchid Hotel (<1km), Doddis Resort (<2km), Ramanashree California Resort (<3km), Hotel Sagar Fishland (<1km), Hopper, Hotel Sri Annapoorneshwari (<1km), The Dominion Club & Resorts (<1km)

Restaurants & Clubs

Huliappas Donne Biryani (<1km), Domino, Doddis Resort (<2km), cafe coffee day (<1km), 9th Mile Dhaba (<2km), Pragathi Bar & Restaurant (<0.5km), Pragati Bar & Restaurant (<1km), Hotel Sagar Fishland (<1km), The Dominion Club & Resorts (<1km.. Sobha Ultima Club House (<3km), Chairman, Agni Aviation (<3km), Team Adventure Club (<4km), Bangalore Club (<21km), Rajmahal Vilas Hospital (<10km), bangalore adventure club pvt.ltd (<7...

Movie Halls

Ganesh Theatre (<1km), Prakash Theatre (<1km), Sharada Talkies (<3km), Cauvery Theatre (<15km), Vaibhav Theatre (<11km), HMT Theatre (<11km), Manoranjan Theatre (<10km), Fun Cinema

Parks

Park (<1km), Rajiv Gandhi Park (<1km), Ganesha Park (<2km), Nisarga Park (<2km), 4th Phase Park (<3km), Lumbini Gardens (<9km), SFS 208 Park (<3km), Manyata Embassy Business Park (<10..

Hospitals & Clinics

Shushrusha Nursing Home (<1km), Yelahanka Government Hospital (<0... Deeksha Hospital (<1km), Jayalakshmi Hospital (<0.5km), Deeksha Othopaedic Hospital (<1km... Ashwini Hospital (<1km), Partha Dental Hospitals & Clinic (<2k.. Krupa Pet Hospital & Vet Pharma (<1.. Chetan Clinic (<0.5km), Balaji Multispeciality Dental Clinic (<... Prakash Clinic (<0.5km), Mahesh Skin Clinic (<0.5km), Dental Health Centre (<0.5km), Lakshmi Dental Clinic (<0.5km), Shrinivasa Eye & Children, Sowmya Dental Clinic (<1km)

Offices

Post Office (<1km), Bruhat Bengaluru Mahanagara Palike.. NES Office (<1km), Yelahanka Telephone Exchange (<1k... RTO - Regional Transport Office (<2k.. Chikkajala Panchayat Office (<1km), Integra Micro Systems (<4km)

Schools & Colleges

Seshadripuram First Grade College (<.. NITTE Meenakshi Institute Of Techno. Srishti School of Art Design and Tech.. Ramakrishna Ayurvedic Medical Coll... M.S. RAMAIAH INSTITUTE OF TECHN. Presidency College (<8km), HKBK College of Engineering (<11km.. Indian Institute Of Science Campus (... Mallya Aditi International School (<2... Canadian International School (<3km.. Mec Junior College Extn Counter (<0...

* All distances are approximate

Properties

Type	Area	Possession	Price *
2BHK Apartment / Flat	1245 SqFeet	-	₹ 65 lakhs
3BHK Apartment / Flat	1500 SqFeet	-	₹ 65 lakhs
3BHK Apartment / Flat	1535 SqFeet	-	₹ 82 lakhs
3BHK Apartment / Flat	1535 SqFeet	-	₹ 70 lakhs
3BHK Apartment / Flat	1605 SqFeet	-	₹ 72 lakhs
3BHK Apartment / Flat	1815 SqFeet	-	₹ 80 lakhs
3BHK Apartment / Flat	1860 SqFeet	-	₹ 1.02 crore
3BHK Apartment / Flat	1860 SqFeet	-	₹ 1.03 crore

* Data has been collected from publicly available sources and may not be up to date.

Prestige Monte Carlo News

Expert Reviews on Prestige Monte Carlo

Explore

[Projects in Bangalore](#)

[Brokers in Bangalore](#)

More Information

Report a problem with this listing

Is any information on this page outdated or incorrect?

[Report it!](#)

Disclaimer: All information is provided by builders, advertisers, or collected from publicly available sources and may not be verified as per RERA guidelines. Any information provided on this website, including facts and figures, should be verified independently before entering into any transaction. PropertyWala.com is only an advertising platform to help connect buyers and sellers and is not a party to any transaction, nor shall be responsible or liable to resolve any disputes between them.