

Residential Plot / Land for sale in GMADA Aerocity, Aero City, Mohali

1.8 crore



★ Featured

Residential Plot

H Block Aerocity Mohali, Aero City, Mohali (Chandigarh)

- Project/Society: [GMADA Aerocity](#)
- Area: 250 SqYards ▾ ■ Facing: North East
- Transaction: Resale Property
- Price: 18,000,000
- Rate: 72,000 per SqYard **+20%**
- Possession: Immediate/Ready to move

Advertiser Details



Sri Sai Estate
Varun Kohli
Broker

Aero City, Mohali
mob: 9872437305
tel: 9878095522
mail: srisaiestate82@gmail.com
www.propertywala.com/sri-sai-estate



Scan QR code to get the contact info on your mobile

[View all properties by Sri Sai Estate](#)

Description

GMADA Aerocity offers Plots of many sizes. Available 250 SqYard Residential plot for sale rare availability in North east facing, walk in park, near to airport road, near to airport hardly 5 minutes distance, near to market Aero Arcade, near to KFC and 24/7 At genuine deal with normal white. 200 ft wide road connecting Chandigarh International Airport. GMADA Aerocity is strategically located and provides direct connectivity to nearly all other major points in and around Mohali. It is one of the most reputable address of the city with easy access to many famed schools, shopping areas, hospitals, recreational areas, public gardens and several other public amenities. For more information contact Sri Sai Estate.

Please mention that you saw this ad on PropertyWala.com when you contact.

Features

Land Features

- Clear Title ■ Freehold Land ■ Close to Hospital
- Close to School ■ Close to Shopping Center/Mall

Location

* Location may be approximate

Landmarks

ATM/Bank/Exchange

Indusind Bank (<0.5km), Axis Bank-Sector Eighty Two Mohali ... State Bank of India (<1km), Indian Bank (<1km), State Bank of India-Sahibzada Ajit Sin.. HDFC Bank-Manauli (<1km), ICICI Bank (<1km), Syndicatebank Mohali Sector-82 Bran. Punjab National Bank (<1km), Axis Bank (<1km), Canara Bank ATM (Formerly Syndica... HDFC Bank (<2km), Union Bank of India (<2km), Punjab & Sind Bank (<2km), Canara Bank-Mohali Isser Campus Se.. State Bank of India-Industrial Area M... Axis Bank ATM (<3km), Punjab National Bank-Chilla (<3km)

Restaurant & Shops

Insan Infratech (<0.5km), Trek Kit India (<1km), Art Batch Concepts (<1km), Archies (<1km), Hariom Handcrafts (<1km), Masala Zing (<1km), MV Supermarket (<1km), The Hype Club & Lounge Bar (<1km), Hollywood (<1km), Tardis Restro Bar (<1km), Good Luck Handloom Wholesale Pri... liser Mohali Shopping Complex (<2k... Fashion Cloth House (<3km), Raman Garments (<3km), Shekhar Shoe Maker (<3km), San Apparel (<3km), Baljeet Boot House (<3km), Italian Shoes Co (<3km), Van Heusen Bestech Square Mall (<3... House of Candy (<3km), VERO MODA (<3km), Namita, Brand Chill (<3km), Calvin Klein (<3km), VAN HEUSEN (<3km), Steps (<3km), Young Fashion (<3km), Fashion Secrets (<3km), Only (<3km)

Recreation

Park-Sec 82 (<1km), Park 0-Aero City Block A (<1km), Park It City (<1km), Park 1-Aero City Block A (<1km), Park 3-Aero City Block C (<1km), Park 2-Aero City Block A (<1km), Guru Nanak Sacred Forest-Tynor Ort... Park 4-Aero City Block C (<2km), Binny Films (<2km), Park 5-Aero City Block C (<2km), Park 6-Aero City Block C (<2km), Park 7-Aero City Block C (<2km), Guru Nanak Sacred Forest-Swraj Eng...

Pictures



Aerial View



Front View

Project Pictures

Greater Mohali Area Development Authority



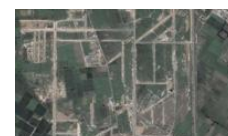
Front View



Living Room



Drawing Room



Plots View



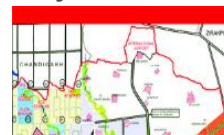
Bathroom



Dinning Room

* These pictures are of the project and might not represent the property

Project Floor Plans



Location Map



Layout Plan

* These floor plans are of the project and might not represent the property

Hotel

[more...](#)

Locality Reviews

Aero City, Mohali

Aerocity is located on Airport road Mohali. This is a beautiful area and very valuable in now these days.

Pros:

- *Highly valuable in future*

Cons:

- *Under development*

Posted: Feb 22, 2017 by [Varinder Sohal \(Gurukirpa Properties Chandigarh\)](#)

It is connected to Patiala highway bypassing Chandigarh...connected to Zoo at Patiala highway with upcoming medical colleges, Infosys in Mohali.

Pros:

- *Central location of Mohali.*
- *Direct Connectivity from Tribune Chowk through industrial area phase 2.*

Posted: Jun 14, 2014 by Vipin Verma

Aero City, Mohali is rated 7 out of 10 based on 2 user reviews.

Disclaimer: The reviews are opinions of PropertyWala.com members, and not of PropertyWala.com.

Project Reviews

GMADA Aerocity

Amenities: premium gated community entrance arch security peripheral compound wall concrete cement roads. Hurry few a very few are available we have a free site visit on all week days. Thank You

Posted: Jun 15, 2021 by [Varun Kohli \(Sri Sai Estate\)](#)

Gmada Aerocity(Greater Mohali Area Development Authority) has set up a goal of achieving a balanced development of the area by preparation of perspective plans, strengthening of infrastructure facilities and promotion of Growth Centers. GMADA is developing Mohali as a world city where the grass is greener, the roads wider, the air cleaner and where proactive and responsive governance is the norm.

Aerocity is Plotted development undertaken by the Punjab Government. The scheme was launched in year 2010. The plots vary from 100 to 500 sq yd. The sizes available are 100, 110, 125, 150, 200, 250, 300, 400 & 500 Sq yd. This township was planned as a residential and commercial hub around the new upcoming International Airport. The entire development falls on the Mohali to Delhi road. L & T was awarded the contract for laying the services and maintaining them for five years GMADA Aero City Mohali has 1000 acres of mix land use development abutting 200 wide road connecting Chandigarh International Airport. The Aerocity is located along both sides of the 200-foot-wide road starting from Sector 66-66-A to Chhat village on the Chandigarh-Patiala National Highway-64. Plots of sizes 5 marla, 6 marla, 8 marla, 10 marla, 12 marla, 16 marla, 20 marla are available for sale.

Mohali, Punjab's buzzing techno city. Two lakh people, open spaces and fresh air. That 's what makes Mohali the perfect city for future living.

Pros:

- *Good location*
- *Well developed area*

Posted: Aug 27, 2015 by [Harpal Virk \(Virk Properties\)](#)

Gmada Aerocity Mohali is rated 9 out of 10 based on 2 user reviews.

Disclaimer: The reviews are opinions of PropertyWala.com members, and not of PropertyWala.com.

Explore

[Similar Properties](#)[Properties in Aero City, Mohali](#)[Projects in Mohali](#)[Brokers in Mohali](#)

More Information

Report a problem with this listing

Is this property no longer available or has incorrect information?

[Report it!](#)

Disclaimer: All information is provided by advertisers and should be verified independently before entering into any transaction. You may visit the relevant RERA website of your state to verify the details of this property. PropertyWala.com is only an advertising platform to help connect buyers and sellers and is not a party to any transactions, nor shall be responsible or liable to resolve any disputes between them.