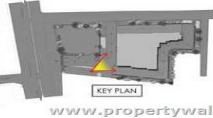


Prestige Botanique - Mavalli, Bangalore

EXTERIOR



www.propertywala.com

Luxurious homes with proper ventilation

Prestige Botanique by Prestige Group at the very prime location of Mavalli in Bangalore offers residential project that host 2 and 3 bhk apartments in various sizes.

- Project ID: J28955611
- Builder: Prestige Group
- Location: Prestige Botanique, Rashtriya Vidyalaya Rd, Upparahalli, Mavalli, Bangalore - 560004 (Karnataka)
- Completion Date: Aug, 2022
- Status: Started

Description

Prestige Botanique by Prestige Group is conveniently situated at Rashtriya Vidyalaya Rd, Upparahalli, Mavalli, Bangalore. The project is spread over 1473 - 2473 sq.ft. comprising of 2 and 3 bhk apartments. The project is well equipped with CCTV Cameras Club House Covered Car Parking Entrance Gate With Security Cabin Gated Community Gym and nearby connectivity such as schools, hospital, road transport etc.

Rera Id: PRM/KA/RERA/1251/310/PR/180627/001936

Amenities:

- CCTV Cameras
- Club House
- Covered Car Parking
- Entrance Gate With Security Cabin
- Gated Community
- Gym
- Health Facilities
- Landscaped Garden
- Lift
- Play Area
- Security Personnel
- Spa
- Swimming Pool

Over the last decade, the **Prestige Group** has firmly established itself as one of the leading and most successful developers of real estate in India by imprinting its indelible mark across all asset classes. Founded in 1986, a leap that has been inspired by CMD Irfan Razack and marshaled by his brothers Rezwan Razack and Noaman Razack.

Features

Luxury Features

- Power Back-up ■ Lifts

Exterior Features

- Reserved Parking ■ Visitor Parking

Maintenance

- Rain Water Harvesting

Security Features

- Security Guards ■ Fire Alarm

Recreation

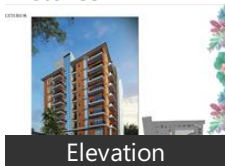
- Swimming Pool ■ Park ■ Fitness Centre / GYM
- Club / Community Center

Land Features

- Club / Community Center ■ Adjacent to Main Road
- Park/Green Belt Facing ■ Water Connection
- Electric Connection ■ Close to Hospital
- Close to School ■ Close to Shopping Center/Mall

Gallery

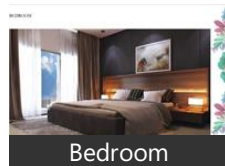
Pictures



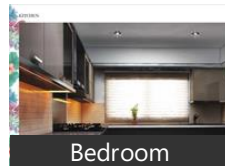
Elevation



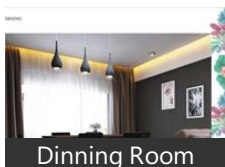
Main Entrance



Bedroom



Bedroom



Dinning Room

Floor Plans



Master Plan



Floor Plan A



Floor Plan B



Floor Plan C



Floor Plan D



Floor Plan E



Floor Plan F



Floor Plan G



Location Map

Location

Landmarks

Hotel

Pride Hotel Bangalore (<3km), JP Cordial (<4km), The President Hotel (<3km), La Marvella (<3km), OYO 316 Hotel Brigade Royale (<5km), JW Marriott Hotel-Bengaluru (<4km), The Lalit Ashok (<6km), Goldfinch Hotel (<5km), Dr. Rajkumar International (<4km), Taj West End (<5km), Citrus Hotels (<6km), Monarch Luxur (<6km), Shangri-la Hotel Bengaluru (<6km), Adarsh Hamilton (<3km), SNT Comforts-Majestic (<3km), The Signature Inn (<3km), Taj MG Road Bengaluru (<7km), The Chevron Hotel (<5km), Nahar Heritage Hotel-St Mark, Hotel Dew Drops (<5km), Aqua (<7km), Hyatt Centric-MG Road Bangalore (<..), Fabhotel Arafah Inn-Gandhinagar (<...), OyoRooms (<4km), Purple LOTUS (<4km), Springs Hotel & Spa (<1km), Hotel Sanman Gardenia (<2km), The Forum Mall (<6km), Hotel Paraag (<5km), Temple Tree Hotel (<2km), Hotel Citadel (<4km), Zone by The Park Infantry (<5km), The Chancery Pavilion (<3km), Hotel Ibis-Bengaluru (<12km), Sanctum (<3km), The Grand Magrath (<5km)

Recreation

Cubbon Park (<4km), Urvashi (<1km), Kanteerava Indoor Stadium (<3km), Visvesvaraya Industrial & Technolog...
Shri Chamarajendra Park-Cubbon Pa... Uma Theatre (<2km), Lalbagh Botanical Garden-West Entra...
Snooker Alley (<2km), Fun Cinemas (<6km)

Restaurant & Shops

Akshaya Aura (<3km), The Biere Club (<4km), Brewsky (<8km), Udipi Ice Creams (<3km), Sapna Book House (<3km), Vapour Bangalore (<10km), Vidyarthi Bhavan (<2km), Tree Top (<2km), Brand Factory (<3km), Portland Steakhouse & Cafe (<6km), The Ritz-Carlton Residency Road (<4...
Xtreme Sports Bar (<10km), Tiger Trail (<10km), More (<1km), Shiro (<4km)

Business & Services

Arbor Brewing Company (<5km), Prestige Atrium (<5km), Vidhana Soudha (<4km)

Public Transport

Shanthinagara Bus Nildhana (<2km), Shanthi Nagar KSRTC Depot (<2km), K R Market Bus Station (<1km), Majestic (<4km), Krantiveera Sangolli Rayanna Bengal... Jayanagar 4th Block BMTC Bus Statio...
City Market Bus Stand (<2km), Bengaluru City Junction Railway Stat... Timber Yard Layout BMTC Bus Statio...
Shivajinagar-SB (<6km), Kempegowda K S R T C Bus Station-E.. Banashankari Bus Stop (<6km)

Landmark/Attraction

Tipus Palace (<1km), Shri Dodda Ganapathi Temple (<3km)

Hospitals & Clinics

Rangadore Memorial Hospital (<1km.. HCG-Health Care Global (<2km), Victoria Hospital (<2km), Nimhans Hospital (<3km), Cloudnine Maternal & Newborn Hos... Vanivilas Hospital (<2km), Kims Hospital Out Patient Block (<1k..

Shopping Centre

Ub City (<4km), Shri Garuda Swagath Mall (<4km), Sukh Sagar Mall (<3km), Matri Mall (<6km), National Market (<3km), Bangalore Central Mall (<6km), Bangalore Central (<6km)

Accommodation

Treebo Mayflower Hayz Boutique (<... Krishna Cedar (<3km), Ug Deluxe Lodge (<3km)

Building

Aishwarya Castle (<4km), Gopalan Mall (<4km)

Coffee/Tea

Brahmin

ATM/Bank/Exchange

DCB Bank-Mahatma Gandhi Road (<... Reserve Bank of India (<3km)

* All distances are approximate

Properties

Prestige Botanique News

Expert Reviews on Prestige Botanique

Explore

[Projects in Bangalore](#)

[Brokers in Bangalore](#)

More Information

Report a problem with this listing

Is any information on this page outdated or incorrect?

[Report it!](#)

Disclaimer: All information is provided by advertisers, including builders/agents/owners, or collected from publicly available sources and may not be verified under RERA. Any information provided on this website, including facts and figures, should be verified independently, including via the relevant RERA website, before entering into any transaction. PropertyWala.com is only an advertising platform to help connect buyers and sellers and is not a party to any transaction, nor shall be responsible or liable to resolve any disputes between them.

[Home](#) » [Bangalore Real Estate](#) » [Projects in Bangalore](#) » [Prestige Botanique - Mavalli, Bangalore](#)