

## Anriya Greinberg - Judiciary Layout, Bangalore



### Luxurious Apartments

Anriya Greinberg is an 86 flats residential complex set amidst acres of greenery with contemporary design as the concept of the project.

- Project ID : J556011903
- Builder: Anriya Group
- Properties: Apartments / Flats
- Location: Anriya Greinberg, Judiciary Layout, Bangalore - 560065 (Karnataka)
- Completion Date: Feb, 2011
- Status: Completed

### Description

**Anriya Group** pay attention to every detail in creating your home and work spaces that make living and working a real pleasure. We combine our professional expertise with latest technology coupled with global design approach to ensure you get the best. Anriya group is a multi-faceted organization promoted by a group of young and talented professionals who have contributed strongly with leading architectural firm's and multinational around the world.

**Anriya Greinberg** is an 86 flats residential complex set amidst acres of greenery with contemporary design as the concept of the project. It is located in the elite Judicial Layout, close to yelahanka off the BIAL New Airport Road, North Bangalore.

#### Location:

- Judicial layout, North Bangalore

#### Amenities & Specifications:

- Designer flats and pent houses
- Sprawling Central courtyard with Lawns and seating areas
- Massive swimming pool & paddle pool
- Children's play area
- State of art Club facilities with Gymnasium, Snooker room and party hall
- Badminton Court
- Jogging/walking track
- Reserved Parking
- Visitor Parking
- Swimming Pool
- Park
- Security Personnel
- Maintenance Staff
- Water Storage.

### Features

#### Luxury Features

- Power Back-up

#### Exterior Features

- Reserved Parking ■ Visitor Parking

#### Maintenance

- Maintenance Staff ■ Rain Water Harvesting
- Waste Disposal

#### Security Features

- Intercom Facility

#### Recreation

- Swimming Pool ■ Park ■ Fitness Centre / GYM

#### Other features

- Security / Fire Alarm ■ Private Garden / Terrace
- Corner Flat / House / Plot ■ Lift(s)
- Security Personnel ■ Water Storage
- Rental Income: Rs. 18000
- Society Name: Anriya Greinberg ■ Flooring: Vinyl
- Furnish: Ready to Move
- Transaction: Resale Property ■ Possession: Immediate
- Ownership: Freehold
- Age of Property: Less than 5 Years
- Total Floors in Complex: 4
- Property on Floor: Ground

### Gallery

#### Pictures



Aerial View



Main Entrance



Front View



Swimming Pool



Panoramic View

## Location

## Landmarks

### Transportation

Jakkuru Airport (<2km), Airport (<7km), Way To Yelahanka (<7km), Orr And Airport Expressway Intersect... Hallmarks Airport Residency Layout ... Road To Bangalore Hal Airport (<18k.. Airport Authority Of India (<20km), Airport Authority Of Indian Airlines (... Airport Road (<20km), Allalasandara Bus Stop (<1km), Ganesh Temple/Gkvk Bus Stop (<2km Chikka Bomma Sandra Bus Stop (<2k.. Sharavati Bus Stop (<3km), Yelahanka Newtown Bus Stand (<3km Sheshadripuram Coll Bus Stop (<3km. Yalahanka Old Bus Stand (<3km), Yelahanka Old Town Bus Stand (<3k... Spare Bus Parking Place. (<3km), Ltk Bus Stop (<3km), Yelahanka Railway Station (<3km), Yelahanka Railway Station Bangalore... Kodigehalli Railway Station (<5km), Stall City Taxi & Tours Travels (<11km)

### Markets & Shopping Malls

Shopping Complex (<1km), Shopping Complex In Sobha Ultima-... Yelahanka Shopping Complex.. (<3k... Shopping Complex-Sobha Suburbia-... Daily Need Shopping Centre (<5km), Esteem Shopping Complex (<6km), South Indias Largest Mall In Yelahank..

### Banks & ATMs

Corporation Bank - Yelahanka New T.. Canara Bank (<2km), Uti Bank (<3km), State Bank Of India (<3km), Sbm Yelahanka Bank (<3km), Canara Bank (<4km), Corporation Bank Atm (<4km), State Bank Of India (<4km), Corporation Bank (<4km), Corp. Bank Residential Quarters (<5k... Uti Atm (<4km), Park View Bakery N Uti Atm (<4km), Citibank Atm (<4km), Karnataka Bank Ltd. (<5km), Uti Atm (<6km)

### Restaurants & Clubs

Green Park (<2km), The Ambience Restaurant (<2km), Manjunath Bar & Restaurant (<3km), Aishwarya Restaurant (<3km), Ceegees Saha Restaurant (<4km), Srija Restaurant (<4km), Manjunatha Bar & Restaurant (<4km.. Sindhu Bar And Restaurant (<6km), Dominion Club And Resorts (<1km), Flying Club (<2km), Rail Wheel Factory Officers Club (<3k.. New Town Club (<3km), Sahakaranagar Club (<3km), Night Club (<4km), Boat Club Tindlu Kere (<6km)

### Hotels & Guest Houses

Housing For Guests (<3km), Hotel Prabhu Vihara (<1km), Hotel Sharavati (<2km), Annapurna Hotel (<5km), Annapoorna Hotel (<5km), Sushmitha Hotel (<6km)

### Movie Halls

Prakash Cinema (<3km), Ganesh Cinema (<3km), Padma Cinema (<3km)

### Hospitals & Clinics

K.K. Hospital (<2km), Yelahanka Govt. Hospital (<3km), Jayalakshmi Hospital (<3km), Veterinary Hospital (<3km), Rwf Hospital (<4km), Wap Hospital (<4km), North Side Hospital (<4km), Neha Prakash Hospital (<5km), Kruthika Hospital (<6km), Kethams Hospital (<6km), Durga Dental Clinic (<1km), Yelahanka Standard Dianostic Centre.. Geeta Clinic (<4km), Children Clinic (<4km), Kadri Clinic (<5km), Sai Dental Clinic (Dr. Veena Nayak) (<. Purushotham Clinic (<5km), Manjunath Clinical Laboratory (<5km.

### Offices

N.E.S Office (<2km), Yelahanka Post Office (<3km), Regional Transport Office( R.T.O) (<3..

Byatarayanpur Post Office (<3km), Property Tax Office - Efficient But Bu... Byatarayanapura Cm c Office (<3km), Classic Terraces (Houses Airtel Office.. Electricity Complaint Office (<4km), Post Office (<4km)

Schools & Colleges

Ohio-Manipal School Of Business (<... Jnanajyothi School (<1km), Prudence School (<1km), Vidyaprakash School (<1km), Vidyashilp Academy School (<2km), M.E.C School (<2km), Poorna Prajna High School (<2km), Govt. High School And College (<2k... St. Marks School (<3km), Yelahanka Newtown Govt. School (<... Prof. Murali (Ph.D Mathematics) Dr... Infant Jesus College Of Nursing And ... Sb College Of Nursing(Ajesh) (<2km), Hina College Of Nursing(Ajesh) (<2k... Gkvk College Playground (<2km), Agriculture College (<3km), Jyana Jothi College(Cafe) (<3km), Sheshadripuram College (<3km), Agragami Academic College (<3km)

Parks

Green Park Dhaba (<1km), Rajiv Gandhi Park (<2km), Green Park (<2km), Khb Park (<3km), Diamond Park (<3km), Mcc Park (<3km), Park Area (<3km), Type 2 Park (<3km), Skyline Beverley Park (<4km), Sahakaranagar Park (<4km)

\* All distances are approximate

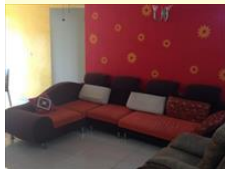
Properties

Type	Area	Possession	Price *
2BHK Apartment / Flat	1200 SqFeet	-	₹ 65 lakhs
3BHK Apartment / Flat	1856 SqFeet	-	₹ 90 lakhs
3BHK Apartment / Flat	2428 SqFeet	-	₹ 1.5 crore
4BHK Apartment / Flat	3055 SqFeet	Immediate/Ready to move	₹ 1.9 crore

\* Data has been collected from publicly available sources and may not be up to date.

Properties available in 'Anriya Greinberg'

3 Bedroom Flat for rent in Anriya Greinberg, Yelahanka, Ban... 20,000



1500 SqFeet Apartment @ Rs.13/SqFeet  
ID: P9548765 — Posted: Mar 14 by Mayank a  
3BHK Apartment in Anriya Greinberg, Bangalore (Anriya Greinberg)  
3 bhk semi furnished 1700 sq feet residential apartments / flats for rent in yelahanka, Bangalore. The apartments / flats has 2 bathroom(S), and this complex has a total of 4 floors & my apartments / flats is in ground floor . Rent quoted for this property is rs. 20 thousands The ... [more details](#)



Anriya Greinberg News

Expert Reviews on Anriya Greinberg

Explore  
[Projects in Bangalore](#)  
[Brokers in Bangalore](#)

More Information

Report a problem with this listing  
Is any information on this page outdated or incorrect?  
[Report it!](#)

**Disclaimer:** All information is provided by builders, advertisers, or collected from publicly available sources and may not be verified as per RERA guidelines. Any information provided on this website, including facts and figures, should be verified independently before entering into any transaction. PropertyWala.com is only an advertising platform to help connect buyers and sellers and is not a party to any transaction, nor shall be responsible or liable to resolve any disputes between them.