

## Shop for sale in Galaxy Blue Sapphire, Noida Extension, Greater Noida

24.55 lakhs



Galaxy Blue Sapphire Plaza Is Built On A Three-Sided Open Property With Roads Of 130 Meters, 45...

Galaxy Blue Sapphire Plaza By Galaxy Group Noida Exte...

- Project/Society: [Galaxy Blue Sapphire](#)
- Area: 153 SqFeet ▾
- Bathrooms: One
- Floor: Ground
- Total Floors: Ten
- Facing: North East
- Furnished: Furnished
- Transaction: New Property
- Price: 2,455,000
- Rate: 16,046 per SqFeet **-15%**
- Age Of Construction: 1 Years
- Possession: Immediate/Ready to move

### Description

The spectacular Galaxy Blue Sapphire Plaza in Noida Extension, Noida, is a well-planned complex. This complex offers a unique living experience with apartments ranging from Rs. 24.8 Lac to Rs. 1.65 Cr. It covers a large area of 6 acres. This project has a total of 1616 units.

It is a world-class commercial project and one of the finest properties in the area. The project is well-built, and all apartments are ready to move in. This project's components include studio apartments and commercial shops. The residential flats are roomy and come in various sizes, including Commercial Shop (160.0 sq. Ft. - 350.0 sq. Ft.), Studio Apartment (622.0 sq. Ft. - 1184.0 sq. Ft.). This well-planned region contains a total of 1 tower with unique advantages. The project's debut month and year are October 1st, 2016. Its legal possession date is July 1, 2020.

Please mention that you saw this ad on PropertyWala.com when you contact.

### Location

\* Location may be approximate

### Landmarks

#### Nearby Localities

[Sector 1](#), [Tech Zone 4](#), [Sector 2](#), [Bisrakh](#), [Aimnabad](#), [Jalpura Village](#), [Sector 12](#), [Ecotech XII](#), [Ecotech XI](#)

\* All distances are approximate

### Locality Reviews

Noida Extension, Greater Noida

Hotcake location to be developed. Noida Extension is a planned city as per authority and the Parichowk to Jewar connector starts from the Noida Extension near Delhi and the expressway.

#### Pros:

- Affordable luxurious
- Gated Community

#### Cons:

- Developing area

Posted: Jun 13 by Veena Mahour

Noida extension is good location near Noida, Ghaziabad, Greater Noida and Delhi. Now Noida extension is

### Advertiser Details

**FAV Consulting Services**  
Shweta Mishra  
Agent

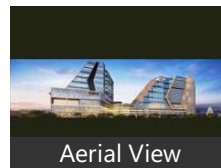
Sector 1, Noida  
mob: 7053593369

tel:  
mail: maira.vatika2014@gmail.com  
[propertywala.com/fav-consulting-services](http://propertywala.com/fav-consulting-services)

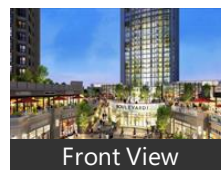
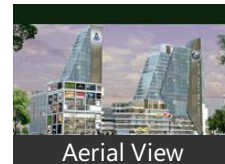
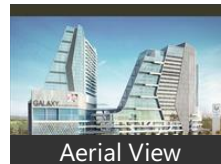


Scan QR code to get the contact info on your mobile  
[View all properties by FAV Consulting Services](#)

### Pictures



### Project Pictures



\* These pictures are of the project and might not represent the property

### Project Floor Plans



\* These floor plans are of the project and might not represent the property

very low rent .and resale price so this location attract investment customer. Now ready metro project. Noida extantion safe for human life.with abroad road ,near market all facilities available.all building approved by RERA. and development by authority. So noida extantion is very excellent .

**Pros:**

- All amenities available
- Road
- Water

**Cons:**

- Slow working
- Many work under construction
- Other

Posted: Jan 6, 2020 by [Mr. D. Tomar \(Tomar Rent Property\)](#)

Noida Extn is one of the most prominent location of Greater Noida. It touches the Noida & Ghaziabad and centrally located from Gr.Noida,Noida,GZb. It also in close proximity of Delhi. If anyone wants good affordable property options near Delhi/ Noida then Noida Extn would be excellent option to own a newly constructed property option

**Pros:**

- Affordable
- Centrally located
- New construction

**Cons:**

- High Density
- Future Traffic congesation
- Delayed projects

Posted: Jul 25, 2019 by [Xpert Homez \(Xpert Homez\)](#)

Noida Extension is a prime realty hub spot for investors and buyers. This location boasts of numerous advantages like schools, institutions, shopping complexes, restaurants. Also, investing in this location is beneficial as it is easily accessible by roads and expressways. Property rate in this location is increasing each passing day. So, go ahead buy a flat in noida extension.

**Pros:**

- Gaur International School Manthan school Ryan Group international school DPS World School Sarvottam

**Cons:**

- No

Posted: Sep 19, 2018 by [Vijay Gupta \(Skylark Group\)](#)

Its a very big area adjoining Noida,Ghaziabad,Greater Noida.In close proximity to Delhi. Sector 62,63 (the corpotaie hub of Noida) is 10 minutes drive from here.Metro is approved & work is in progress.Several affordable housing projects are there for all the categories of customers

**Pros:**

- low cost
- affordable
- bank approved

Posted: Feb 21, 2017 by [Abhishek S \(Spaces India\)](#)

most planned upcoming residential hub of DELHI NCR with provisions of all leading brands

**Pros:**

- connectivity
- proximity
- affordability

**Cons:**

- underconstruction

Posted: Feb 9, 2017 by Abhishek Shankar

Noida Extension is ideal organized location to stay, away from dust and pollution.

**Pros:**

- Located Opposite to Gaur city International School

**Cons:**

- Its not yet fully developed

Posted: Feb 4, 2017 by Rajeev Sinha

Noida Extension going to be the best residential and IT Hub in Delhi NCR. It has access to 2 expressways Eastern Peripheral Expressway and FNG Expressway. More than 3 lakh Flats are in developing phase. Few societies already in possession. Schools like DPS, Saint Jones, Gaur International, Aster public School, Ryan International school etc are already there. Shopping malls, Business Centers, IT Space all are present within one location so it would be beneficial for residents of Noida Extension. Metro is also proposed by 2019 so it would be hot cake for investors in future.

**Pros:**

- Biggest Residential development
- Wide roads
- 50% Green area

**Cons:**

- Farmers Dispute

Posted: May 9, 2016 by [Anand Prakash \(Propright Infra Services\)](#)

Noida Extension having great builder background with school, commercial space, hospital etc

**Pros:**

- All amenities available

Posted: Apr 25, 2016 by [Manish bansal \(Capital Estate\)](#)

Noida Extension is the most sought after both for residential and commercial purpose, with many residential apartment flats and malls at this location and due to close connectivity from Delhi NCR and due to affordable flats at this location, Noida Extension has high demand. Many apartments now offering Possession soon.

**Pros:**

- *Good connectivity*
- *Well developed*
- *Affordable price*

Posted: Jan 28, 2016 by Ajay Pathak

Noida Extension, Greater Noida is rated 7 out of 10 based on 10 user reviews.

Disclaimer: The reviews are opinions of PropertyWala.com members, and not of PropertyWala.com.

Explore

[Similar Properties](#)

[Properties in Noida Extension, Greater Noida](#)

[Projects in Greater Noida](#)

[Brokers in Greater Noida](#)

More Information

Report a problem with this listing

Is this property no longer available or has incorrect information?

[Report it!](#)

**Disclaimer:** All information is provided by advertisers and should be verified independently before entering into any transaction. You may visit the relevant RERA website of your state to verify the details of this property. PropertyWala.com is only an advertising platform to help connect buyers and sellers and is not a party to any transactions, nor shall be responsible or liable to resolve any disputes between them.