

# 1 Bedroom Apartment / Flat for rent in Andheri East, Mumbai

38,500



## Prosperous Home In Andheri East

Hari Dham Society, Rk Singh Marg, Mogra Village, Andhe..

- Area: 600 SqFeet ▾
- Bathrooms: Two
- Total Floors: Seven
- Lease Period: 12 Months
- Rate: 64 per SqFeet **-10%**
- Age Of Construction: 3 Years
- Available: Immediate/Ready to move
- Bedrooms: One
- Floor: Fifth
- Furnished: Semi Furnished
- Monthly Rent: 38,500

## Advertiser Details

**Sapna Bhat**

Santaacruz West, Mumbai

mob: 8928400458

tel:

mail:

[www.propertywala.com/U16856719](http://www.propertywala.com/U16856719)



Scan QR code to get the contact info on your mobile

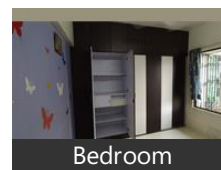
## Description

10 mins walking distance from Andheri railway station and metro station

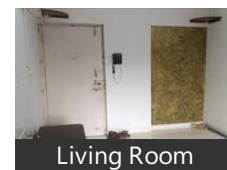
Please mention that you found this ad on PropertyWala.com when you call.

## Location

## Pictures



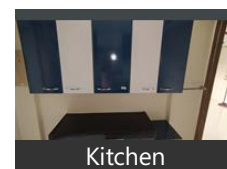
Bedroom



Living Room



Master Bed Room



Kitchen



Kitchen

\* Location may be approximate

## Landmarks

### Nearby Localities

[Andheri West](#), [Veera Desai Road](#), [Jogeshwari West](#), [Chakala](#), [Lokhandwala](#), [4 Bungalows](#), [Jogeshwari East](#), [Amboli](#), [Vile Parle East](#), [Vile Parle West](#)

\* All distances are approximate

## Locality Reviews

Andheri East, Mumbai

Very good for girls or boys students. Working ladies also welcome. Close to the airport n Andheri kurla road.

### Pros:

- MAROL ALWAYS IN GOOD DEMAND

### Cons:

- FULL TRAFFIC

Posted: Aug 22, 2020 by [Chetna Balan \(Chetnas Agency\)](#)

Very Prime Location. Close to Metro, Railways, Bus Depot etc. Very good place for carrying out business.

### Pros:

- Very good location
- Mixture of Commercial & Residential
- Many Star Hotels Around

Posted: Oct 25, 2017 by Bhanu Naik

andheri is well developed locality. it has all facilities such as : good network, well connected roads ,better lifestyle and 24 hours emergency facility.

### Pros:

- mumbai metro facility
- international airport

Posted: Jun 11, 2017 by Gurwinder Singh

Ideal location for business, all kinds of businesses, good food.This very good demarcation between residential and commercial places. Even many Govt. offices present here

**Pros:**

- Good Connectivity
- Variety of properties for all types of Orgs.
- Centrally located

**Cons:**

- Traffic Jam

Posted: Feb 10, 2017 by Yash Mehta

Andheri East is prime location in western suburban as compare to other locality in Mumbai. This locality is suitable for both commercial and residential seekers, this has also prime public place such as international airport, metro railway etc.

**Pros:**

- This area is well connect to Eastern and western Mumbai through metro railway.

**Cons:**

- This is the very traffic jam area of Mumbai

Posted: Jun 19, 2016 by [Umesh Padhan \(Support Realty\)](#)

Andheri east is commercial hub in Mumbai easy connect to South Mumbai to North Mumbai & Thane also connectivity is easy by metro and train in Andheri

**Pros:**

- Good Connectivity

**Cons:**

- Traffic Congesation

Posted: Apr 16, 2016 by [Kamlesh chouhan \(Property Clinic Mumbai\)](#)

Andheri East is a very good market in terms of connectivity, safety, and locality. As commercial business are growing day by day, Real Estate Market has a very good scope of growing in Andheri east.

**Pros:**

- Familiar Location
- Excellent Connectivity throughout the city
- Market has increased

**Cons:**

- Powai, a High Traffic Zone
- Rates are high as demands increases

Posted: Apr 12, 2016 by [Vikas Gupta \(Smartlink Consultancy\)](#)

Andheri East has huge commercial hub approx 36% of Commercial and corporate are based in Andheri East.

**Pros:**

- Potential Area For Growth of Business
- Great Connectivity to Any part of Mumbai
- Metro Service available

**Cons:**

- Traffics noticed in peak hours

Posted: Mar 21, 2016 by [Aashish Panday \(Monks Realty Property Consultant\)](#)

Andheri East is a hub of all commercial, MNC Banks and other offices with added benefit of International Airport and maximum no of Hotels and other such necessities requirements for a good office space such as connecting with all direction via Metro, Railways and buses.

**Pros:**

- Good Connectivity

Posted: Feb 25, 2016 by [Jayraam Prasad \(Himalayan Monks Realty Services\)](#)

Andheri East is a serene and peacefully locality which is connected to all the major and important nodes of Mumbai. All the major business hubs are located in Andheri.

**Pros:**

- International Airport
- Proximity to SEEPZ, MIDC and Mumbai Metro
- Proximity to Goregaon through Aarey-JVLR connecting east-west suburbs

Posted: Feb 9, 2016 by [Lyn Dsouza \(Lyns Real Estate\)](#)

Andheri East, Mumbai is rated 7 out of 10 based on 10 user reviews.

Disclaimer: The reviews are opinions of PropertyWala.com members, and not of PropertyWala.com.

Explore

[Similar Properties](#)

[Properties in Andheri East, Mumbai](#)

[Projects in Mumbai](#)

[Brokers in Mumbai](#)

More Information

Report a problem with this listing

Is this property no longer available or has incorrect information?

[Report it!](#)

**Disclaimer:** All information is provided by advertisers and should be verified independently before entering into any transaction. You may visit the relevant RERA website of your state to verify the details of this property. PropertyWala.com is only an advertising platform to help connect buyers and sellers and is not a party to any transactions, nor shall be responsible or liable to resolve any disputes between them.