

2 Bedroom Apartment / Flat for rent in Kharadi, Pune

42,000



2 Bedroom Apartment For Rent In Pune

Span O Life, Kharadi, Kharadi, Pune - 411014 (Maharashtr...

- Area: 1100 SqFeet ▾
- Bathrooms: Two
- Total Floors: Eleven
- Furnished: Furnished
- Monthly Rent: 42,000
- Age Of Construction: 7 Years
- Available: Immediate/Ready to move
- Bedrooms: Two
- Floor: Tenth
- Facing: East
- Lease Period: 11 Months
- Rate: 38 per SqFeet

Advertiser Details

Monica Lolge
0

Kharadi, Pune
mob: 8007728707
tel: 9822771680
mail:
www.propertywala.com/U16127719

Scan QR code to get the contact info on your mobile

Description

The house has been freshly painted, deep cleaned, and renovated. Comes with all the furnishings like a Sofa, TV, DTH, Centre Table, Dining Table, Kitchen Trolleys, Refrigerator, Water Purifier, EasyDry, Washing Machine, Geysers, Beds, Mattress, Wardrobes, AC, Side Table, Dressing table Lights, Fans, Curtains, Housekeeping, and Garbage Disposal.

Gated community with Gym, Swimming pool, Club house, indoor and outdoor games, Kids play area

Secluded entrance for privacy and hassle-free living

Covered car parking, visitors parking

Just pack your bags and move in!!

Walking distance from major IT parks in Kharadi like EON, WTC, Gera, etc, and also from Schools, Colleges, Supermarkets, Restaurants, etc

Please mention that you saw this ad on PropertyWala.com when you contact.

Features

General

- Power Back-up
- Room AC
- Lifts

Lot

- Private Terrace

Exterior

- Reserved Parking
- Visitor Parking
- Servant Quarter
- Swimming Pool
- Park
- Fitness Centre / GYM
- Club / Community Center

Maintenance

- Maintenance Staff
- Water Supply / Storage
- RO System
- Boring / Tube-well
- Rain Water Harvesting
- Waste Disposal

Location

* Location is approximate

Locality Reviews

Kharadi, Pune

One of the promising place to live in. With all the services, malls within 6km radius.

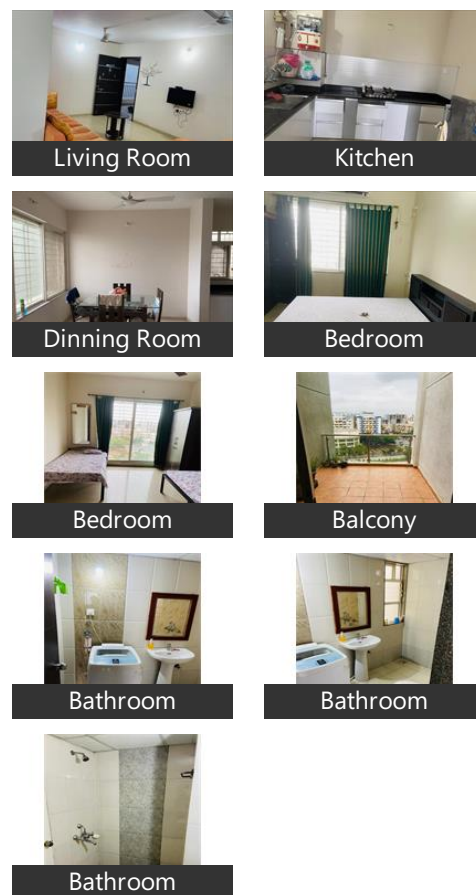
Pros:

- Easy connectivity

Cons:

- Prices high

Pictures



Everything is nearby.
Sophisticated atmosphere.
Hygienic.
All shopping malls,schools, hospitals, gymnasium,etc everything is nearby.

- Pros:**
- 1) Everything is Nearby.
 - 2) Sophisticated atmosphere
 - 3) Hygienic

- Cons:**
- NO CONS

Posted: Aug 9, 2020 by Shubham Kaswa

Kharadi is the latest, rapidly developing IT Hub of Pune. It is centrally located in the heart of the city. With EON IT Park, many world renowned businesses are setting up their offices in this location. Property rates in this location are shooting up fast. It is a sought-after locality for IT brands and residential projects are selling at a rapid pace. Kharadi is the hot location for investments and growing businesses.

- Pros:**
- Good connectivity, widest roads
 - Malls,hospitals, multiplexes, schools in vicinity

Posted: May 15, 2019 by Sneha Bijlani

One of the fastest growing locality of Pune. Great connectivity to airport, railway station and access to Solapur and Ahmednagar highways. Close to shopping malls and movie theaters

- Pros:**
- Good transport connectivity
 - Proximity to offices
 - Close to the airport

- Cons:**
- Prices increasing rapidly

Posted: Feb 11, 2019 by Prabal Deb

Kharadih is one of the fastest growing residential and commercial hubs in Pune. With IT hubs and Commercial Malls, every thing from work to fun is within minutes of reach. Several gated communities and vicinity to airport and areas like Koregaon Park, Kalyani nagar and Viman Nagar are an added advantage.

- Pros:**
- Nearer to work places like MIDC, WTC
 - Several Malls like Seasons Mall, Amonara Mall, Several Hospitals with emergency care units
 - Cultural Diversity

- Cons:**
- The traffic at peak hours is sometimes bad

Posted: Jun 7, 2017 by Abhijit Majumdar

World Trade Center in Kharadi - hub of business in Pune. DP road connecting EON to Wagholi and Surrounding areas.

- Pros:**
- IT Hub
 - International Company Presence
 - Well developed Infrastructure

Posted: Jul 17, 2014 by [Jennifer A \(Gulmohar Development\)](#)

Good connectivity to EON IT park, distance is just 3.5 kms, and from Nagar road just a 200 m. Also well connected to Kharadi bypass and Magarpatta city.

- Pros:**
- Good connectivity to Eon IT park, Kharadi bypass and also Magarpatta city

Posted: May 4, 2013 by [Sagar sudame \(Pristine Group\)](#)

Kharadi, Pune is rated 8 out of 10 based on 7 user reviews.

Disclaimer: The reviews are opinions of PropertyWala.com members, and not of PropertyWala.com.

Explore

- [Similar Properties](#)
- [Properties in Kharadi, Pune](#)
- [Projects in Pune](#)
- [Brokers in Pune](#)

More Information

Report a problem with this listing

Is this property no longer available or has incorrect information?

[Report it!](#)

Disclaimer: All information is provided by advertisers and should be verified independently before entering into any transaction. You may visit the relevant RERA website of your state to verify the details of this property. PropertyWala.com is only an advertising platform to help connect buyers and sellers and is not a party to any transactions, nor shall be responsible or liable to resolve any disputes between them.