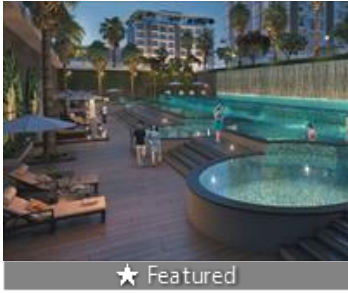


4 Bedroom Apartment / Flat for sale in Godrej Palm Retreat, Sector 150, N 3.15 crores



★ Featured

Godrej Palm Retreat Floor Plans Have Been Designed To Cater To The Needs Of Different Individuals...

Godrej Palm Retreat By Godrej Properties Sector 150, No..

- Project/Society: [Godrej Palm Retreat](#)
- Area: 3198 SqFeet ▾
- Bathrooms: Four
- Total Floors: Twenty
- Furnished: Furnished
- Price: 31,525,000
- Age Of Construction: 1 Years
- Possession: Immediate/Ready to move
- Bedrooms: Four
- Floor: Second
- Facing: North East
- Transaction: New Property
- Rate: 9,858 per SqFeet -15%

Description

Noida is one of the most promising localities coming up in Delhi NCR. Sector 150 is a residential hub located on the southern edge of Noida Expressway. It enjoys excellent connectivity to Noida, Greater Noida and Delhi via Noida-Expressway and Yamuna-Expressway and is just 8 km from Pari Chowk. Close to prestigious residential projects, this locality is gaining popularity and attracting investors as well as buyers. Developers like TATA and Godrej are developing premium projects in this locality. Noida Sector 148 metro station on Noida - Greater Noida Aqua line, is just 5 mins drive from the locality. Residents will not have to worry about daily commutation as many buses and other public transport facilities like cabs and autos are available.

When you call, don't forget to mention that you found this ad on PropertyWala.com.

Location

* Location may be approximate

Landmarks

Nearby Localities

[Sector 152](#)

* All distances are approximate

Locality Reviews

Sector 150, Noida

It is a fine piece of property with potential in near future as per the Noida sector 150 plan.

Pros:

- Connectivity with Delhi NCR

Cons:

- NONE

Posted: Nov 14, 2020 by Deepu Bamzai

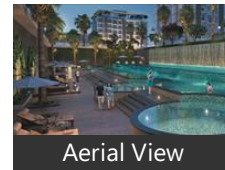
Sector-150, Noida Expressway is an upcoming prime location as a residential cum corporate hub. Sector-150 Noida Expressway has been declared as a smart sector & is also a special economic zone, this sector is quite close to Pari Chowk, Night safari, Gautam Budh university, formula 1 & Yamuna Expressway. Sector-150 at Noida Expressway enjoys an added advantage as the proposed metro station at sector-149 is quite close, quick,easy connectivity via Noida Expressway adds to the advantage of this upcoming prime location.

Pros:

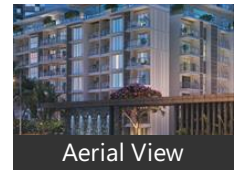
Advertiser Details

Scan QR code to get the contact info on your mobile
[View all properties by FAV Consulting Services](#)

Pictures



Aerial View



Aerial View

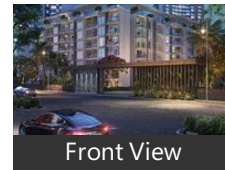


Aerial View

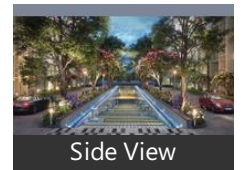


Aerial View

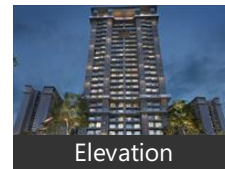
Project Pictures



Front View



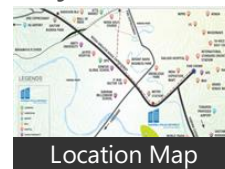
Side View



Elevation

* These pictures are of the project and might not represent the property

Project Floor Plans



Location Map



Master Plan



Floor Plan A



Floor Plan B

* These floor plans are of the project and might not represent the property

- Quick and easy connectivity
- Smart sector
- Corporate cum residential sector

Posted: Apr 24, 2015 by [Plots Sale \(Balaji Properties Mayur Vihar\)](#)

Sector 150, Noida is rated 8 out of 10 based on 2 user reviews.

Disclaimer: The reviews are opinions of PropertyWala.com members, and not of PropertyWala.com.

Explore

[Similar Properties](#)

[Properties in Sector 150, Noida](#)

[Projects in Noida](#)

[Brokers in Noida](#)

More Information

Report a problem with this listing

Is this property no longer available or has incorrect information?

[Report it!](#)

Disclaimer: All information is provided by advertisers and should be verified independently before entering into any transaction. You may visit the relevant RERA website of your state to verify the details of this property. PropertyWala.com is only an advertising platform to help connect buyers and sellers and is not a party to any transactions, nor shall be responsible or liable to resolve any disputes between them.