

Silpa Lepakshi Nagar - Pangal Road, Anantapur



Residential Apartments

Super structure reinforced cement concrete framed structure. Residential Apartment in Pangal Road Anantapur Silpa Lepakshi Nagar specifications super structure reinforced cement concrete framed structure.

- Project ID : J574911903
- Builder: Silpa Real Estates Pvt. Ltd.
- Properties: Apartments / Flats, Residential Plots / Lands, Agricultural Plots / Lands
- Location: Silpa Lepakshi Nagar, Pangal Road area, Anantapur (Andhra Pradesh)
- Completion Date: Jun, 2011
- Status: Starting

Description

Silpa Real Estates Pvt. Ltd.: 1994 saw the establishment of Silpa Real Estates Pvt. Ltd., an awakening with a firm commitment to provide construction of world class standards. We provide construction of the best available quality with the best Architectural Design, Engineering & Landscaping services executing several notable projects, across the state. Each and every construction bears the stamp of innovation; refined taste, elegant aesthetic design & classic touch driven, by the best of technology. Allied with excellent customer value based services, we have achieved 100% customer satisfaction ratio based on mutual trust & faith. Whether you are in need of our preconstruction and construction management services in design / build, design / assist, lease / lease back or traditional bid, we are ready to bring your vision to life.

Silpa Lepakshi Nagar specifications super structure reinforced cement concrete framed structure. Residential Apartment in Pangal Road Anantapur Silpa Lepakshi Nagar specifications super structure reinforced cement concrete framed structure. Esto luego de lanzarse desde la pasarela del sector ubicado a unos ocho.

Location Advantages:

- Hospital: 1.0 Kms
- School: 1.0 Kms
- ATM: 1.0 Kms

Lifestyle Amenities:

- Power Back-up
- Security / Fire Alarm
- Centrally Air Conditioned
- Private Garden / Terrace
- Corner Flat / House / Plot
- Feng Shui / Vaastu Compliant
- Reserved Parking
- Visitor Parking
- Swimming Pool
- Park
- Security Personnel
- Maintenance Staff
- Water Storage
- Fitness Centre / GYM
- Club house / Community Center
- Waste Disposal
- Rain Water Harvesting

Features

Luxury Features

- Power Back-up ■ Centrally Air Conditioned

Lot Features

- Balcony ■ Corner Location

Exterior Features

- Reserved Parking ■ Visitor Parking

Maintenance

- Maintenance Staff ■ Water Supply / Storage
- Rain Water Harvesting ■ Waste Disposal

Security Features

- Security Guards ■ Electronic Security
- Intercom Facility ■ Fire Alarm

Interior Features

- Modular Kitchen ■ Feng Shui / Vaastu Compliant

Recreation

- Swimming Pool ■ Park ■ Fitness Centre / GYM
- Club / Community Center

Land Features

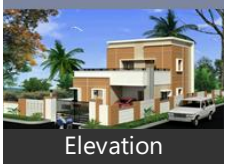
- Clear Title ■ Freehold Land ■ Plot Boundary Wall
- Society Boundary Wall ■ Corner Plot
- Feng Shui / Vaastu Compliant
- Club / Community Center ■ Adjacent to Main Road
- Water Connection ■ Electric Connection
- Close to Hospital ■ Close to School
- Close to Shopping Center/Mall

Other features

- Security / Fire Alarm ■ Private Garden / Terrace
- Corner Flat / House / Plot ■ Security Personnel
- Water Storage ■ Club house / Community Center
- Society Name: Lepakshi Nagar
- Furnish: Semifurnished ■ Additional Rooms: Others
- Transaction: New Property ■ 2011
- Ownership: Freehold
- Age of Property: Under Construction
- Property on Floor: Ground ■ Possession: June

Gallery

Pictures



Elevation



Front View



Roway Housing

Floor Plans



Layout Plan



Location Map



Floor Plan-1



Floor Plan-2



Floor Plan-3



Floor Plan-4



Floor Plan-5

Location

Landmarks

Markets & Shopping Malls

Ananthapur Municipal Shopping Co...

Transportation

R T C Bus Depo... (<10km), R T C Bus Stand (<10km), Railway Station (<10km)

Hotels & Guest Houses

Umas Hotel[Pruthvi Raj] (<11km)

Restaurants & Clubs

Nandini Restaurant (<6km), Anantapur Club (<9km), Anantapur Health Club (<9km)

Banks & ATMs

Jntu Bank (<4km)

Hospitals & Clinics

Rdt Hospital.Blr Road.Located By Sa.... Sri Ramavaduta Dental Clinic (<8km)

Offices

Bsnl Office (<5km), Rto Office (<5km)

Parks

So Called Sarada Nagar Park (<5km)

Schools & Colleges

Rdt--School For Inculsive Education-... Lrg High School (<3km), My School (Lrgh Anantapur) -Ganga...
Vinay Kumar School (<4km), Kendriya Vidyalaya School Quaters A... Jntu College Of Engg Anantapur (<4...
Jntu College Of Engineering Anantap.. Law College (<5km), Sri Sai Jr College (<5km),
Haris Intemediet College (<5km), Medical College (<5km)

* All distances are approximate

Properties

Type	Area	Possession	Price *
Residential Plot / Land	600 SqFeet	-	₹ 1.3 lakh
Agricultural Plot / Land	18 Acres	-	₹ Below 10 lacs

* Data has been collected from publicly available sources and may not be up to date.

Silpa Lepakshi Nagar News

Expert Reviews on Silpa Lepakshi Nagar

Explore

[Projects in Anantapur](#)

[Brokers in Anantapur](#)

More Information

Report a problem with this listing

Is any information on this page outdated or incorrect?
[Report it!](#)

Disclaimer: All information is provided by builders, advertisers, or collected from publicly available sources and may not be verified as per RERA guidelines. Any information provided on this website, including facts and figures, should be verified independently before entering into any transaction. PropertyWala.com is only an advertising platform to help connect buyers and sellers and is not a party to any transaction, nor shall be responsible or liable to resolve any disputes between them.