

## 2 Bedroom Apartment / Flat for sale in Omkar Sereno, Andheri East, Mum.

1.5 - 2 crores



### 2 BHK For Sale In Omkar Sereno, Andheri East, Mumbai.

Omkar Sereno, Andheri East, Mumbai (Maharashtra)

- Project/Society: [Omkar Sereno](#)
- Area: 700 SqFeet ▾
- Bathrooms: Two
- Total Floors: More than 20
- Furnished: Unfurnished
- Price: 19,300,000
- Rate: 27,571 per SqFeet **+40%**
- Age Of Construction: Under Construction
- Possession: Within 5 Years
- Bedrooms: Two
- Floor: Nineteenth
- Facing: East
- Transaction: New Property

### Description

Omkar International District is a big township project located at Andheri East Mumbai and one of the tower name is Omkar Sereno, and this project view is beautiful. Omkar Sereno at Andheri by Omkar Developers is offering premium boutique 1 nd 2 BHK residences with 1+1 and 2+2 jodi residences plan.

Sereno at Omkar is a part of a 5-acres\* development that doesn't just come with luxury and lifestyle amenities but also acres of lush greenery and 1.7 acres of open to sky expanse. The premium 1 and 2 BHK homes are specially designed to offer a view of all the greenery, landscaping and panoramic views of the vivid cityscape.

#### Project Amenities:

- Sports Zone
- Gym and health club
- Play Area
- Half Olympic-size Swimming Pool
- Full-Size Tennis court
- Half-Size basketball
- Court
- Creche
- Party Lawn
- Children's Play Area
- Jogging Track

#### Omkar Sereno Features:

- 1 st International cndoor Club House by GOCO, UK with a massive area of 26,000 sq. ft. is equipped with several recreational activities
- Celebrity Kitchen by Ranbeer Brar
- Globally renowned International, Hospitality partners
- Project is being developed on 5 acres
- Master planning by world's leading Architect - Foster + Partners, U.K. This project holds a host of premium elements like a grand entrance lobby, high-speed elevators, 3 tier safety - CCTV at entry & exit points.

#### Location Advantage:

- Direct access from the Western Express Highway
- 2 mins\* Walk to the upcoming metro station
- 5 mins\* to the International & Domestic Airport
- 5 min\* drive to Luxury Hotels & hangouts
- 5 mins\* drive to entertainment and recreation hot spots

### Advertiser Details



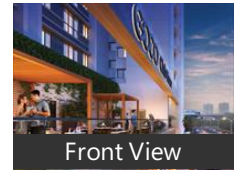
**Buildscape Infra**  
sales buildscape Infra  
Broker

Mejiwada, Thane  
mob: 9987693363  
tel: +91-998-7693363  
mail: [buildscapeinfra@outlook.com](mailto:buildscapeinfra@outlook.com)  
[www.propertywala.com/buildscape-infra](http://www.propertywala.com/buildscape-infra)

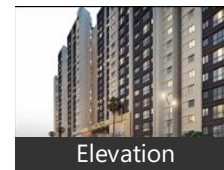
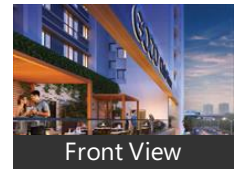
Scan QR code to get the contact info on your mobile

[View all properties by Buildscape Infra](#)

### Pictures

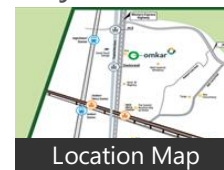


### Project Pictures



\* These pictures are of the project and might not represent the property

### Project Floor Plans



\* These floor plans are of the project and might not represent the property

5 mins\* to central business districts

Important Aspects of Omkar Sereno:

Cuts Travelling time in BIG way

Superior Construction Quality

Premium Elevation

Three layer security system

Away from noise of roads and market.

When you call, don't forget to mention that you found this ad on PropertyWala.com.

## Features

### General

- Power Back-up ■ Lifts

### Lot

- Park Facing

### Exterior

- Reserved Parking

### Maintenance

- Maintenance Staff ■ Water Supply / Storage
- Rain Water Harvesting ■ Waste Disposal

### Security

- Security Guards ■ Intercom Facility ■ Fire Alarm

### Interior

- Marble Flooring ■ Granite Flooring

### Recreation

- Swimming Pool ■ Park ■ Fitness Centre / GYM
- Club / Community Center

## Location

\* Location may be approximate

## Landmarks

### Offices

Mukteshwar Ashram Powai (<7km), www.Chembur.NET (<10km), Sant Nirankari Satsang bhawan (<11k.. Joshi Jagir Hall (<3km), Navinbhai Thakker Auditorium (<5km Swatantryaveer Vinayak Damodar Sa... Najma Haptulla Hall (<6km), Sambhaji Mitra Mandal (<6km), Nanda Kripa Hall (<7km), Sankalp sevasang Hall (<8km), Jai Bhavani RTO Advisor (<8km), Laxmi Nagar Hall (<9km), Ahimsa Hall. (<9km), Samaj Kalyan Mandir By Anand Bagu.. shri Ganesh Mitra Mandal Registered...

### Transportation

Chhatrapati Shivaji International Airp.. Juhu Airport (<6km), Cabs Now (<3km), Web Design (<5km), Air Works India Pvt. Ltd. (<6km), Helipad Film City (<7km), NO.1 WORLD WAIDE EXPPRESS PVT.... Free Parking (<2km), Sahar International Airport Mumbai (.. Chhatrapati Shivaji Intenational Airpo. New Import Baggage Bldg (<3km), TMI Academy Mumbai (<4km), Threshold (<4km), IOSL (<5km), Juhu Aerodrome (<6km), Helipad No1 (<6km), Hiranandani Powai Helipad (<6km), Juhu ATC Tower (<6km), MU Helipad (<8km), Westin Helipad (<9km)

### Shopping

Janta Stores Electric (<9km), Coffee & Tea Instant Premix - Soul F... Apna Bazaar (<12km), Soul Foods (<13km), Coffee & Tea Instant Premix (<13km), Jay Bharat General Store (<2km), RELAY (<3km), Powai Pan Beedi Shop (<4km), Nagrik Suvidha (<5km), MAMAJI'S MEDICAL & GENERAL STO. CLICKSENSE-PAYWISE KIOSK (<5km), Janta Enterprises (<6km), Light General Store (<7km), Kum Kum Collection (<7km), Vinayak Coconut And Grain Stores (<.. Shiva stores (<7km), KGN Stores (<7km), Free Drinking Water - Sheetal Jal Ken... Sekhon General Stores (<7km)

### Recreation

PVR Cinemas (<2km), MUMBAI FILM ACADEMY (<8km), Carnival Cinemas (<1km),

[more..](#)

## Locality Reviews

Andheri East, Mumbai

Very Prime Location. Close to Metro, Railways, Bus Depot etc. Very good place for carrying out business.

### Pros:

- Very good location
- Mixture of Commercial & Residential
- Many Star Hotels Around

Posted: Oct 25, 2017 by Bhanu Naik

andheri is well developed locality. it has all facilities such as : good network, well connected roads ,better lifestyle and 24 hours emergency facility.

**Pros:**

- *mumbai metro facility*
- *international airport*

Posted: Jun 11, 2017 by Gurwinder Singh

Ideal location for business, all kinds of businesses, good food.This very good demarcation between residential and commercial places. Even many Govt. offices present here

**Pros:**

- *Good Connectivity*
- *Variety of properties for all types of Orgs.*
- *Centrally located*

**Cons:**

- *Traffic Jam*

Posted: Feb 10, 2017 by Yash Mehta

Andheri East is prime location in western suburban as compare to other locality in Mumbai. This locality is suitable for both commercial and residential seekers, this has also prime public place such as international airport, metro railway etc.

**Pros:**

- *This area is well connect to Eastern and western Mumbai through metro railway.*

**Cons:**

- *This is the very traffic jam area of Mumbai*

Posted: Jun 19, 2016 by [Umesh Padhan \(Support Realty\)](#)

Andheri east is commercial hub in Mumbai easy connect to South Mumbai to North Mumbai & Thane also connectivity is easy by metro and train in Andheri

**Pros:**

- *Good Connectivity*

**Cons:**

- *Traffic Congesation*

Posted: Apr 16, 2016 by [Kamlesh chouhan \(Property Clinic Mumbai\)](#)

Andheri East is a very good market in terms of connectivity, safety, and locality. As commercial business are growing day by day, Real Estate Market has a very good scope of growing in Andheri east.

**Pros:**

- *Familiar Location*
- *Excellent Connectivity throughout the city*
- *Market has increased*

**Cons:**

- *Powai, a High Traffic Zone*
- *Rates are high as demands increases*

Posted: Apr 12, 2016 by [Vikas Gupta \(Smartlink Consultancy\)](#)

Andheri East has huge commercial hub approx 36% of Commercial and corporate are based in Andheri East.

**Pros:**

- *Potential Area For Growth of Business*
- *Great Connectivity to Any part of Mumbai*
- *Metro Service available*

**Cons:**

- *Traffics noticed in peak hours*

Posted: Mar 21, 2016 by [Aashish Panday \(Monks Realty Property Consultant\)](#)

Andheri East is a hub of all commercial, MNC Banks and other offices with added benefit of International Airport and maximum no of Hotels and other such necessities requirements for a good office space such as connecting with all direction via Metro, Railways and buses.

**Pros:**

- *Good Connectivity*

Posted: Feb 25, 2016 by [monk jp \(Jp Monk Realty\)](#)

Andheri East is a serene and peacefully locality which is connected to all the major and important nodes of Mumbai. All the major business hubs are located in Andheri.

**Pros:**

- *International Airport*
- *Proximity to SEEPZ, MIDC and Mumbai Metro*
- *Proximity to Goregaon through Aarey-JVLR connecting east-west suburbs*

Posted: Feb 9, 2016 by [Lyn Dsouza \(Lyns Real Estate\)](#)

Andheri East is a very peaceful location. Easy to commute mid seeps airport Chakala, close to major MNC company easy access to western and eastern express highway.

**Pros:**

- *It is very peaceful location.*

Posted: Apr 25, 2014 by [Pravina Ghia \(Dayaraj Property\)](#)

Explore

[Similar Properties](#)

More Information

Report a problem with this listing

Is this property no longer available or has incorrect

[Properties in Andheri East, Mumbai](#)

[Projects in Mumbai](#)

[Brokers in Mumbai](#)

**Disclaimer:** All information is provided by advertisers and should be verified independently before entering into any transaction. PropertyWala.com is only an advertising platform to help connect buyers and sellers and is not a party to any transactions, nor shall be responsible or liable to resolve any disputes between them.