

Paranjape Blueridge The Groves - Hinjewadi, P..



Apartment with elegance

Paranjape The Groves by Paranjape Schemes Constructions Ltd at the very prime location of Hinjewadi, Pune offers residential project that host 1 bhk apartments in various sizes.

- Project ID: J394873118
- Builder: Paranjape Schemes Constructions Ltd
- Location: Paranjape The Groves, Hinjewadi, Pune - 411057 (Maharashtra)
- Completion Date: Dec, 2025
- Status: Started

Description

Paranjape The Groves by Paranjape Schemes Constructions Ltd is conveniently situated at Hinjewadi, Pune. The project is spread over 445 sq.ft. comprising of 1 bhk apartments in various sizes. The project is well equipped with Swimming Pool gymnasium multipurpose room children's play area and nearby connectivity such as schools, hospitals, road connectivity etc.

Rera Id: P52100027419

Amenities :

- 24Hrs Backup Electricity
- Intercom
- CCTV Cameras
- Club House
- Covered Car Parking
- Gym
- Indoor Games
- Kids Pool
- Landscaped Garden
- Lift
- Play Area
- Security Personnel
- Swimming Pool

Paranjape Schemes Constructions Ltd Success comes from the desire to do extraordinary things to reach beyond the status quo and relentlessly chase your dreams. At Paranjape we don't just build homes but believe in creating a happy vibrant community. We have over 190 top of the line projects completed in the past 30 years with a strong presence in both Residential and Commercial sectors. We are pioneers in developing housing projects for senior citizens in the country, under our Athashri brand as we feel we understand seniors' needs. Hence, we aspire to deliver not just a home with construction of walls but a light of hope, dreams and the happiness of a family.

Features

Luxury Features

- Power Back-up ■ Lifts

Exterior Features

- Reserved Parking ■ Visitor Parking ■ Servant Quarter

Maintenance

- Rain Water Harvesting

Security Features

- Security Guards ■ Fire Alarm

Recreation

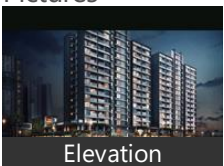
- Swimming Pool ■ Park ■ Fitness Centre / GYM
- Club / Community Center

Land Features

- Club / Community Center ■ Park/Green Belt Facing
- Water Connection ■ Electric Connection
- Close to Hospital ■ Close to School
- Close to Shopping Center/Mall

Gallery

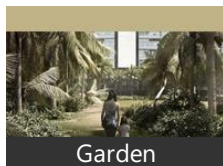
Pictures



Elevation



Swimming Pool



Garden

Floor Plans



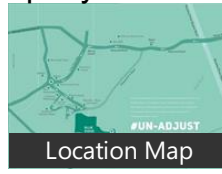
Master Plan



Floor Plan A



Floor Plan B



Location Map

Location

Landmarks

ATM/Bank/Exchange

Kotak Mahindra Bank (<0.5km), Axis Bank (<0.5km), Indian Bank-Hinjewadi (<0.5km), Central Bank of India-Hinjewadi (<0.5km), State Bank of India-Sbiintouch (<0.5km), Bank of Baroda (<0.5km), Canara Bank-Hinjewadi (<0.5km), Idbi Bank (<0.5km), State Bank of India Atm (<0.5km), HDFC Bank (<0.5km), Axis Bank Atm (<0.5km), ICICI Bank (<1km), Bandhan Bank (<1km), Bandhan Bank-Hinjewadi (<1km), Icici Bank Atm (<1km), ICICI Bank-Infosys Phase-1-Pune (<1km), Kotak Mahindra Bank - Atm (<1km), ICICI Bank-Pune Hingwadi (<1km), Dena Bank-Mann (<1km), Indian Overseas Bank-Hinjewadi (<1km), Indian Overseas Bank (<1km), Bank of Maharashtra Atm (<1km), Yes Bank (<1km), Yes Bank Atm (<1km), State Bank of India-Midc (<2km), State Bank of India (<2km), Bank of Maharashtra (<2km)

Hostel

Prestige Pg (<0.5km), New Shri Sai Pg (<0.5km), Reddy Pg (<0.5km), Saujanya Pg (<1km), Redys Pg (<1km), Akashdeep (<1km), Matoshri Hostel (<1km), Thunder World (<1km), Saptagiri Pg (<1km), Chowk Mukesh Pg (<2km), Chandu Pg (<2km)

Hospitals & Clinics

Shree Hospital (<0.5km), Shree Hospital-ER (<0.5km), Shri Hari Dham Ayurvedic Panchkarm, Balaji Multi Speciality Hospital & Me... Shri Clinic (<1km), Laxmi Medical & General Stores (<2km), Dr. Choudharys Dental Clinic (<2km), Sai Hospital and clinics (<2km), Life Point Pathology Laboratory (<2km)

Restaurant & Shops

Levi, Bhawani Super Market (<1km), Devi Super Market (<1km), Eternia (<1km), Shriram General Store & Electric (<1km), Jagadamba Super Market (<1km), Mataji Super Market (<1km), Epm Fashion (<1km), Ronak Super Market (<1km), Shri Ram Enterprises (<1km), Sai Super Market (<1km), Satyam Super Market (<1km), Puja Super Market (<1km), Krishna Footwear (<1km), Ambika Footwear (<1km), Dreamrich Mens Wear (<2km), Payal Super Market (<2km), Chamunda Collection (<2km), Balaji General Stores (<2km), Insta Mart (<2km), Elevate Bar (<2km)

Landmark/Attraction

Wheelstreet (<0.5km)

Public Transport

Infosys Phase 2 (<0.5km)

Hotel

ibis Hotel-Hinjewadi (<1km), Spine Longer Apartment Hotel (<1km), Radisson Blu Hotel (<1km), GRAND HYATT HOTELS (<1km), Ekant Girivan (<1km), Ginger Hotel (<1km), TATA Toyo (<2km), Spree Hotels (<2km), Zip-Hinjewadi (<2km)

Accommodation

Oyo 36998 Shobha

Petrol Station

Bharat Petroleum (<1km)

Recreation

Adda Cafe (<1km), Fountain Infosys Phase 2 (<2km)

* All distances are approximate

Properties

Paranjape Blueridge The Groves News

Expert Reviews on Paranjape Blueridge The Groves

Explore

[Projects in Pune](#)

[Brokers in Pune](#)

More Information

Report a problem with this listing

Is any information on this page outdated or incorrect?

[Report it!](#)

Disclaimer: All information is provided by advertisers, including builders/agents/owners, or collected from publicly available sources and may not be verified under RERA. Any information provided on this website, including facts and figures, should be verified independently, including via the relevant RERA website, before entering into any transaction. PropertyWala.com is only an advertising platform to help connect buyers and sellers and is not a party to any transaction, nor shall be responsible or liable to resolve any disputes between them.

[Home](#) » [Pune Real Estate](#) » [Projects in Pune](#) » [Paranjape Blueridge The Groves - Hinjewadi, Pune](#)