

Residential Plot / Land for sale in Yelahanka, Bangalore

72 lakhs



★ Featured

1200 Sq. Ft For Sale

Yelahanka Extension, North Bengaluru, Yelahanka, Banga..

- Area: 1200 SqFeet ▾ ■ Facing: East
- Transaction: New Property ■ Price: 7,200,000
- Rate: 6,000 per SqFeet -5%
- Possession: Immediate/Ready to move

Description

Amenities: Basket Ball Court, Multi Play Courts, Skating Rink, Tennis court, Cricket Pitch, Mini Golf Putting, Sand Volley, Ball Courts, Children Play Area, Pet Parks, Open Air Theatres, Multipurpose Lawns, Meditation Pavilions, Multiple congregation spaces, Themed Gardens, Fruit Orchard, Community Kitchen Garden, Multi PurposeHall, Restaurant, Party Lawn, Swimming pool, Spa, Gym, Indoor Games area, Crèche Badminton courts AND MANY MORE...

When you contact, don't forget to mention that you saw this ad on PropertyWala.com.

Location

* Location may be approximate

Landmarks

Nearby Localities

[Kogilu](#), [Jakkur Plantation](#), [Jakkur](#), [Yelahanka New Town](#), [Jakkuru Layout](#), [Agrahara Badavane](#)

* All distances are approximate

Locality Reviews

Yelahanka, Bangalore

Best place without any traffic, without any noise pollution, air pollution, better living.

Pros:

- Traffic free

Posted: Oct 20, 2019 by Gopal Y

Lake view apartment as lake is visible from the balcony of the flat. Always breezy requiring no fan! Abundant parking & a secured environment with a beautiful ambience.

Pros:

- Govt employees campys

Cons:

- Airport road makes it quite difficult

Posted: Jun 10, 2017 by M Anand

Best place in Bangalore, near to office, best schools, having a malls everywhere.. it's a place for all religions.

Pros:

- nice houses
- lots of gud people

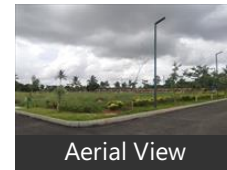
Cons:

Advertiser Details

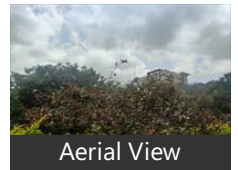
Temptation Realty
Dileep Shetty
Director
Brigade Road area, Bangalore
mob: 9741555559
tel: 8050079074
mail: temptationrealty2011@gmail.com
temptationrealtyinc.com/

Scan QR code to get the contact info on your mobile
[View all properties by Temptation Realty](#)

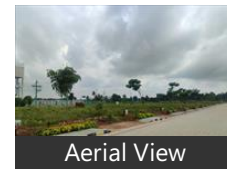
Pictures



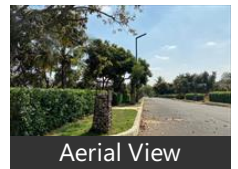
Aerial View



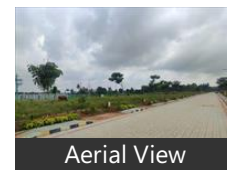
Aerial View



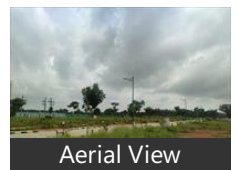
Aerial View



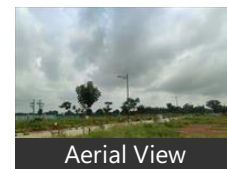
Aerial View



Aerial View



Aerial View



Aerial View

■ traffic

Posted: Apr 17, 2017 by Akash Gowda

Yelahanka is a New Town in which is somewhat developed and is also Being improved.

Pros:

- New SomerSet Mall nearTrafic Police Station:coming up very soon,
- Sanitary Drainage ,Kaveri water Service in already Completed
- Asphaltng work is under progress ,completing in about 2-3 months which was damaged sanitary pipelines

Cons:

- Metro not connected may come later years up to Airport

Posted: Mar 1, 2017 by Bache R

Yelahanka is an upcoming locality and is very well equipped with all necessary amenities

Pros:

- Well developed with very wide roads
- Closer to New airport
- Nice place to stay with lot of fresh air

Cons:

- Water supply from BWSSP is not there at some regions
- Far away from Bangalore main marketing areas

Posted: Mar 7, 2016 by K Sarover

Yelahanka is a very good locality with proximity to International Schools, Tech Parks, Highways, International Airport, Good connectivity and less pollution and Traffic.

Pros:

- Good Connectivity to all parts of Bangalore
- Less Polution & Less Traffic
- Greenary

Posted: Aug 18, 2015 by Rakesh Kumar

Yelahanka is a good location for students and Govt Employees. Good schools/colleges are nearby. No tension of traffic. Close to International Airport. Good parks nearby.

Pros:

- Good tranposrt facility
- Close to International Airport
- Nearby railway station
- Good schools and colleges nearby.

Posted: Aug 26, 2013 by Sanjay Joshi

Yelahanka among best places to live in Bangalore.

Pattabhirama Nagar in Jayanagar (ward number 168) and Yelahanka Satellite Town (ward number 4) were rated the best two wards in Bangalore in an assessment by WQS across 23 life indicators, such as water, sanitation, environment, mobility and public amenities. Jayanagar and Yelahanka are the best assembly constituencies by quality of life, taking into account scores of all their constituent wards.

Pros:

- More number of parks, and greenery.
- Good educational institutes from Primary to Undergraduate level.
- Traffic seems to be okay. But in future it needs to be covered by Namma metro.

Cons:

- Ground water table in some areas is not good.

Posted: Jul 2, 2013 by Ravi R

Yelahanka is a great town, close to everything. No water problems. Transportation is great. It is next to Mother Dairy. Schools are excellent.

Pros:

- Polution is very low
- Good transport options

Posted: Jun 8, 2013 by Anand David

Yelahanka is a new Gurgaon for Bangalore. A highest appreciating value of property is seen in this area due to BIAL airport and 4600 acres of SEZ coming with financial city. Aerospace park, IT & Hardware park are very close to Yelahanka and before BIAL airport.

Pros:

- Good place to invest in properties in this area.
- Airport, SEZ, Aerospace park, IT & Hardware park nearby

Cons:

- Late comers will be penalized with higher rates of properties.

Posted: May 18, 2013 by Aslam Mohammad

Yelahanka, Bangalore is rated 8 out of 10 based on 10 user reviews.

Disclaimer: The reviews are opinions of PropertyWala.com members, and not of PropertyWala.com.

Explore

[Similar Properties](#)

[Properties in Yelahanka, Bangalore](#)

[Projects in Bangalore](#)

[Brokers in Bangalore](#)

More Information

Report a problem with this listing

Is this property no longer available or has incorrect information?

[Report it!](#)

state to verify the details of this property. PropertyWala.com is only an advertising platform to help connect buyers and sellers and is not a party to any transactions, nor shall be responsible or liable to resolve any disputes between them.