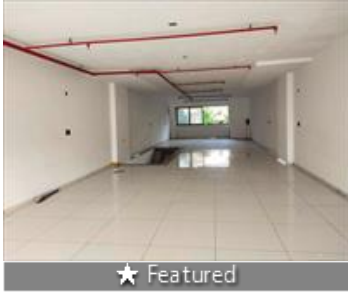


Showroom for rent in Navrangpura, Ahmedabad

2.5 lakhs



Commercial Showroom Available On Long Lease

Nr Gujarat Collage, Navrangpura, Ahmedabad - 380006 ...

- Area: 4000 SqFeet ▾
- Floor: Ground
- Facing: West
- Lease Period: 24 Months
- Rate: 62 per SqFeet **-5%**
- Age Of Construction: 1 Years
- Available: Immediate/Ready to move
- Bathrooms: One
- Total Floors: Thirteen
- Furnished: Unfurnished
- Monthly Rent: 250,000

Description

Commercial showroom for rent in Navrangpura prime location

Retail combo

This commercial space as per vastu direction & overlooks main road offering airy business interiors. Ample space for covered car parking. Modern construction is done in this newly built commercial space. The property is very well maintained build. With all the amenities like parking, security, water facility attach toilet, pantry. Available. Having many property in commercial. Please contact us for any commercial property related inquiry.

Given images are for representation purpose only. For more details contact us floor details is may be change given images are for representation purpose only. For more details or property inspection please call us broker excuse

#restoration #cafe #branded #jewelry #showroom #garment #saloon #tiles #ethnicwere #ahmedabad #corporateroad #prahladnagar #commercial #sindhuhavan #sghighway #shop #vastrapur #suryaproperty #branded #jewelry #showroom #gym #furniture #furnitureshowroom #display #retailbranded #restaurant #garment #saloon #tiles #ethnicwere #ahmedabad #corporateroad #prahladnagar #commercial #sindhuhavan #sghighway #shop #shopping #ahmadabad #investment #buyer #property #lease #roi #invest

Don't forget to mention that you saw this ad on PropertyWala.com, when you call.

Features

General

- Power Back-up ■ Lifts

Lot

- Basement ■ Park Facing

Recreation

- Park ■ Club / Community Center

Location

Security

- Security Guards ■ Electronic Security
- Intercom Facility ■ Fire Alarm

Exterior

- Reserved Parking ■ Visitor Parking

Maintenance

- Maintenance Staff ■ Water Supply / Storage
- RO System ■ Boring / Tube-well ■ Waste Disposal

Advertiser Details

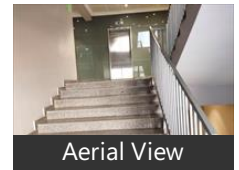
Hari Real Estate Solutions
Hitesh s Bhatt
Owner/Proprietor

mob: 9974256101
tel: 9426201168
mail: suryapropertyconsultants@gmail.com
propertywala.com/hari-real-estate-solutions



Scan QR code to get the contact info on your mobile
[View all properties by Hari Real Estate Solutions](#)

Pictures



* Location may be approximate

Landmarks

Hotel

Lemon Tree Hotel Ahmedabad (<2km Hotel Ashish (<1km), Lemon Tree Premier the Atrium -Ahm Oyo 901 Hotel Host Inn (<3km), Sarovar Portico Ahmedabad (<3km), Oyo 2286 Hotel Bridge (<2km), Hotel El Dorado (<2km), Hotel le Grande Residency (<0.5km), Super Inn Armoise Hotel (<3km), The President A Boutique Hotel (<3k... FOUR POINTS BY SHERATON Ahmed. RAMADA by Wyndham Ahmedabad... Hotel Pride Plaza (<7km), Comfort INN President (<2km), Hotel Platinum Inn-Vasna (<3km), Starottel Ahmedabad (<5km), The Grand Bhagwati (<8km), At Nine -the Fern an Ecotel Hotel (<9. Hotel Kingston (<8km), Courtyard Ahmedabad (<7km), Hyatt Regency Ahmedabad (<4km), Best Western Rock Regency (<0.5km), Hotel Summit (<2km), Treatotel (<6km), Neelkanth Inn (<1km), Oyo 900 Marshall the Grand Hotel (<... Royal Orchid Central (<1km), Hotel La365 (<1km), Aloft (<10km), Hotel Celestia-HL College (<3km), Capital O 891 Hotel Kadamb Inn (<2k.. Radisson Blu (<1km), Epsilon the Hotel (<1km), Vice President (<3km), Hotel Cosmopolitan (<3km)

Restaurant & Shops

Crossword (<2km), Law Garden Night Market (<1km), Agashiye (<3km), The Project Cafe (<2km), Atul Book Stall (<4km), Pantaloons (<2km), Sasuji (<2km), Kalyan Jewellers Ambawadi (<1km), D Mart (<5km), Samsung Smartphone Care (<2km), Brand Factory (<4km), Reliance Digital (<1km), Swati Snacks (<1km), Krios Hotel (<2km), Arvindbhai Khatri & Sons (<1km)

Shopping Centre

Ahmedabad Central (<1km), Himalaya Mall (<6km), National Handloom (<1km), Iscon Mega Mall (<8km), The Acropolis (<8km), CG Square (<1km)

Building

Patel Society (<1km), Bakery City (<7km), Akashdeep Annexe (<3km), Vasant Kunj Society (<1km) [more...](#)

Locality Reviews

Navrangpura, Ahmedabad

Navrangpura is Posh Locality of Ahmedabad. It have school, university, Restaurant, Hospitals, Garden within it. Owners take pride to have residence in this area.

Pros:

- Area is Posh in Ahmedabad
- It is having School, University, Garden, Hospital
- Area is thickly populated with Upper Middle class

Cons:

- Property prices are high
- Few land is available as it is thickly populated

Posted: Aug 2, 2020 by Mihir Mehta

Navrangpura is one of the best location of ahmedabad.Navrangpura is center of ahmedabad city.

Pros:

- All facility Available in navrangpura.

Posted: Jan 25, 2020 by [Dipak Gohil \(Maruti Associates\)](#)

Good area for residents. Good locality
Daily life required item easy buy because mall, shops etc are very close

Pros:

- Best location

Cons:

- Some society issue for bechlor

Posted: Dec 27, 2018 by Om PG

It is a centrally located prime business as well as posh residential area in Ahmedabad.
very popular and a covetous land pocket among investors & local business tycoons.

Pros:

- centrally located prime area

Posted: Sep 24, 2018 by [Durga Bowen \(Space Spiders Associate\)](#)

Navrangpura, Ahmedabad is rated 7 out of 10 based on 4 user reviews.

Disclaimer: The reviews are opinions of PropertyWala.com members, and not of PropertyWala.com.

Explore

[Similar Properties](#)

[Properties in Navrangpura, Ahmedabad](#)

[Projects in Ahmedabad](#)

[Brokers in Ahmedabad](#)

More Information

Report a problem with this listing

Is this property no longer available or has incorrect information?

[Report it!](#)

Disclaimer: All information is provided by advertisers and should be verified independently before entering into any transaction. You may visit the relevant RERA website of your state to verify the details of this property. PropertyWala.com is only an advertising platform to help connect buyers and sellers and is not a party to any transactions, nor shall be responsible or liable to resolve any disputes between them.