

## Shop for sale in Satya The Hive, Sector-102, Gurgaon

81 lakhs



### Shop For Sale In Sector 102 Satya The Hive

Satya The Hive, Sector-102, Gurgaon - 122505 (Haryana)

- Project/Society: [Satya The Hive](#)
- Area: 500 SqFeet ▾
- Bathrooms: Five
- Floor: Ground
- Total Floors: Seventeen
- Facing: East
- Furnished: Furnished
- Transaction: New Property
- Price: 8,100,000
- Rate: 16,200 per SqFeet **+40%**
- Age Of Construction: Under Construction
- Possession: Within 1 Year

### Advertiser Details

**Varun Properties and Consultant**  
Varun Arora

Sector 17, Chandigarh City  
mob: 9999407305  
tel: 9999407605  
mail: [varun@propertywala.com](mailto:varun@propertywala.com)  
[www.propertywala.com/varun-properties-and-consultant](http://www.propertywala.com/varun-properties-and-consultant)

Scan QR code to get the contact info on your mobile

[View all properties by Varun Properties and Consultant](#)

## Description

### Satya the hive

Satya group presents The Hive, a commercial and highstreet marvel at Sector 102, located just off Dwarka Expressway, the lifeline of upcoming Gurgaon. The development offers contemporary shopping, modern workspaces and new-age serviced apartments. The Hive being at strategic location and with advanced design makes it a viable proposition with enormous returns, since Dwarka Expressway is one of the top 5 investment destinations in the country.

Satya group is a name to reckon within the field of real estate in India. Backed with an experience of four decades, the company's approach is based on the premise of delivering excellence through quality. One of the leading real estate developers with a strong presence in Delhi and the NCR region.

### Features: The Hive

HIGH STREET RETAIL/ FOOD COURT/ OFFICE SPACES/MULTIPLEX

**Large imposing frontage of new age architecture.**

**Spacious multi-level car parking.**

**Street level entrance overlooking pedestrian walkway.**

**High speed elevators for faster vertical conveyance.**

**Advanced fire-safety, prevention and fire-fighting system**

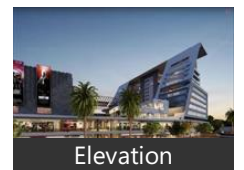
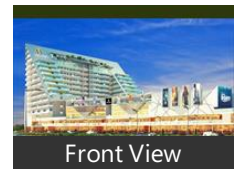
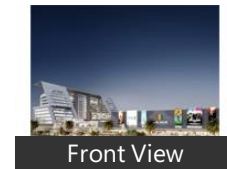
**Separate entry and exit for smooth traffic flow.**

**Lifestyle amenities including Gym and Health zone.**

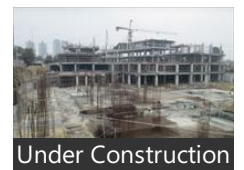
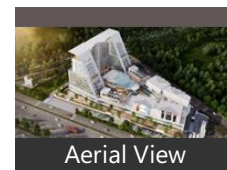
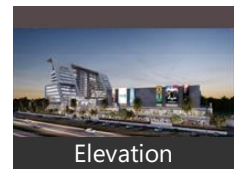
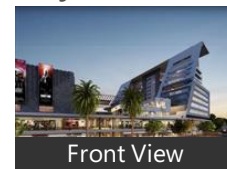
**Ample Natural Light and ventilators.**

**Smoke detectors and sprinklers system in all areas.**

## Pictures



## Project Pictures

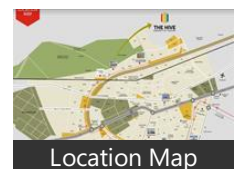


Particulars		Rate	Area	Total
Shop	500	16200	8100000	
Office	500	16200	8100000	
Food Court	500	16200	8100000	
Multiplex	500	16200	8100000	
Other	500	16200	8100000	
<b>Total</b>	<b>2500</b>	<b>16200</b>	<b>40500000</b>	

**Price List**

\* These pictures are of the project and might not represent the property

## Project Floor Plans



- High Street Retail
- Large imposing frontage of new age architecture
- Street level entrance overlooking pedestrian walkway
- Well placed escalators and high speed elevators
- Spacious multi-level car parking

- Multiplex and Food Court
- Mega 6 screen multiplex
- Multi-cuisine restaurants, outdoor cafes, patisseries and hygienic street food zone
- Food court offering value meal to all segments
- Great spot for corporate lunches

- Serviced Apartments
- Meticulously designed and fully furnished serviced apartments with luxury specifications
- An in-house concierge desk to assist you with your day to day requirements
- Serviced apartments fitted with kitchenette, retiring room/bedroom, bathroom, living/dining area and an extended balcony for maximum flexibility
- High speed dedicated passenger and service elevators for the service suites tower
- Well laid out parking facilities within the complex
- Lifestyle amenities for the residents includes gym and health zone
- Independent access to a grand lobby

- Smart Offices
- Choose from wide range of areas, Power back-up and surveillance
- Options for fibre optic and high speed wi-fi internet connectivity
- Advanced fire-safety, prevention and fire-fighting system
- High speed elevators for faster vertical conveyance, Fully secured environment

■

When you call, please mention that you saw this ad on PropertyWala.com.

## Features

### General

- Power Back-up ■ Centrally Air Conditioned
- Room AC ■ Lifts ■ High Speed Internet ■ Wi-Fi

### Lot

- Balcony ■ Basement ■ Corner Location
- Park Facing

### Recreation

- Swimming Pool ■ Park ■ Fitness Centre / GYM
- Club / Community Center

### Security

- Security Guards ■ Electronic Security
- Intercom Facility ■ Fire Alarm

### Exterior

- Reserved Parking ■ Visitor Parking
- Independent Garage ■ Servant Quarter

### Maintenance

- Maintenance Staff ■ Water Supply / Storage
- RO System ■ Water Softner ■ Boring / Tube-well
- Rain Water Harvesting ■ Waste Disposal

## Location

\* Location may be approximate

## Landmarks

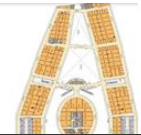
### Hotel

Galaxy Hotel (<12km), Emblem Hotel (<11km), Hyatt Regency Gurgaon (<12km), The Pllazio Hotel (<14km), Lemon Tree Premier 2 Leisure Valley ... Oyo 9899 Hotel Palm Tree (<9km), Corporate Residency (<14km), Park Inn (<10km), Golden Tulip (<13km), Hotel Samrat (<10km), CROWNE PLAZA HOTEL Gurgaon (<... Treebo Trend Essence (<14km), Clarksinn (<10km), Hotel Viva Destination (<10km), Hotel Chaupal (<10km), Hotel Imperial Residency (<12km)

### Public Transport



Floor Plan A



Floor Plan B



Floor Plan C



Floor Plan D

\* These floor plans are of the project and might not represent the property

Gurgaon Railway Station (<7km), Gurgaon Bus Stand (<10km), Daurala Border (<11km), Sukhrali Village Sector-17c (<13km)

#### Recreation

INOX (<8km), PAYAL CINEMA (<12km), Sultanpur National Park (<10km), Nana Park-Sector 14 Gurgaon (<11km), DLF Colony Park (<11km), Jmd Gardens (<12km), DT Cinemas (<12km)

#### Restaurant & Shops

Downtown - Diners & Living Beer Ca... Harish Bakers (<8km), Sheetla Mata Traders (<8km), Deepmala Sarees (<9km), Reliance Fresh (<6km), Samsung Service Centre (<11km), Big Bazaar (<13km), Reliance Digital Service Centre (<8km), Raghu Gas Service-Indane (<8km), Vishal Mega Mart (<11km), Reliance Digital (<11km), Dilli (<11km), Cloud 9 (<13km), Om Sweets (<12km)

#### Hospitals & Clinics

Sheetla Hospital (<9km), Medanta the Medicity (<12km), Unique Diagnostics (<9km), Yadav Hospital (<7km), Columbia Asia Hospital-ER (<12km), Sunrise Hospital (<8km), Ahmad Hospital (<11km), Piles and Skin Dermatologist (<6km), Medanta the Medicity-ER (<12km), Kalvani Hospital (<11km), [more...](#)

#### Explore

[Similar Properties](#)

[Properties in Sector-102, Gurgaon](#)

[Projects in Gurgaon](#)

[Brokers in Gurgaon](#)

#### More Information

#### Report a problem with this listing

Is this property no longer available or has incorrect information?

[Report it!](#)

**Disclaimer:** All information is provided by advertisers and should be verified independently before entering into any transaction. You may visit the relevant RERA website of your state to verify the details of this property. PropertyWala.com is only an advertising platform to help connect buyers and sellers and is not a party to any transactions, nor shall be responsible or liable to resolve any disputes between them.