

## Warehouse / Godown for rent in Bommasandra Industrial Area, Bangalore

5.5 lakhs



★ Featured

### Warehouse/ Godown For Rent At Bommasandra - Jigini Industrial Area

Bommasandra - Jigini, Bommasandra Link Road, Anekal ...

- Area: 30000 SqFeet ▾
- Floor: Ground
- Facing: North East
- Lease Period: 12 Months
- Rate: 18 per SqFeet + 10%
- Age Of Construction: 2 Years
- Available: Immediate/Ready to move
- Bathrooms: Six
- Total Floors: One
- Furnished: Semi Furnished
- Monthly Rent: 550,000

### Description

Warehouse / Godown Space for Rent At Bommasandra , Jigini, Bommasandra - Jigini Link Road, Bommasandra Industrial Area , Jigini Industrial Area, Attibele Road , Anekal , Road, Bommanahalli , Electronic City , Hosur Road , Hosur , Bannergatta Road, Bommasandra Bangalore for which Rent is negotiable.

This Warehouse / Godown is close to Main Road, with facility for labor nearby, close to hospitals, bus stand, police station, fire brigade, access to transport with plenty of parking for trucks & 40ft containers.

Facilities toilets for labours, office with attached washroom. Vdf flooring, canopy done. Facility for crane, 4ft dock with dock leveller provision, lighting arrestor, fire hydrant with sprinkler facility if required. Turbo Ventilators, exhaust, natural lighting, back up, power, borewell water facility,

New construction, security room, labor room, drivers rest room, close gated 10ft compound wall with 3ft above barewire, cement Roads all around with drainage systems

When you call, please mention that you saw this ad on PropertyWala.com.

### Features

#### General

- Power Back-up
- Lifts
- High Speed Internet
- Wi-Fi

#### Lot

- Corner Location

#### Maintenance

- Maintenance Staff
- Water Supply / Storage
- RO System
- Water Softner
- Boring / Tube-well
- Rain Water Harvesting
- Waste Disposal

#### Security

- Security Guards
- Electronic Security
- Intercom Facility
- Fire Alarm

#### Exterior

- Reserved Parking
- Visitor Parking
- Independent Garage
- Servant Quarter

#### Other features

- International Standard
- Latest Modern Facility
- Hi Tech Warehouse
- PEB Structure
- Compound Wall
- Fully Covered Canopies
- Fire Compliance
- Dock Leveller Provision
- Lightning Arrestor Facility
- Ramp Facility
- Rolling Shutters
- Turbo Ventilators
- Natural Lighting
- Office Area
- Cafeteria Space
- Internal LED Lights
- Ample Truck Parking Space

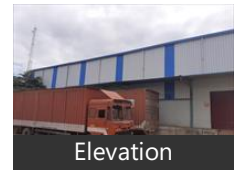
### Location

### Advertiser Details

**F5K Realty**  
Feroz Khan  
Director  
HBR Layout, Bangalore  
mob: 7892210005  
mail: f5krealty@gmail.com  
tel: 8105299975  
www.propertywala.com/f5k-realty-bangalore

Scan QR code to get the contact info on your mobile  
[View all properties by F5K Realty](#)

### Pictures



## Landmarks

### Hotel

Radha Regent Bengaluru (<4km), Lemon Tree Hotel Electronics City Be.. Manipal County (<11km), Sai Vishram Business Hotel (<1km), Mango Mist Resort-Jigani (<10km), Oyo 10885 Hotel Keerthana Internatio. Radiant Resort (<14km), Lords Plaza Electronic City Bangalore.. Keys Hotel-Hosur Road (<11km), Hotel Ekaa-Kudlu (<13km), Eagle Ridge Resorts-Hommadevanah..

### Restaurant & Shops

The Oterra (<6km), D Mart (<4km), Robert Bosch Engineering and Busin... Anugraha Enterprises (<2km), Magic Oven (<10km), Seetharama Indane Gas Services-Inda.. Nova Concrete Products (<3km), Vishwas Fashion Plus (<4km)

### Business & Services

Biocon (<2km), Micro Labs (<2km), HCL Technologies (<4km), Land Maark (<3km), Siemens Technology & Services (<4k.. Stericon Pharma-Main Entrance (<1k.. Bangalore Sales Corporation (<4km), Biocon Park-Gate 1 (<3km), Southern Batteries (<0.5km), Mersen India (<1km), Microcon I2i (<1km), Valspar India Coatings Corporation-... Nordson India (<1km), Sfo Technologies-Main Gate (<4km), Nash Industries (<2km), Danish Steel Cluster (<5km), Jigani Village& Industrial Area (<9km.. Titan Industries (<1km), Ontop Pharmaceuticals-Main Entran... Decathlon Sports India (<14km), MTR Foods-Gate 4 (<1km), Ozone Manay Technology Park (<13... Switchgear and Control Technics (<2.. Rishi Laser-Main Entrance (<2km), Ipc Packaging Co Unit-6 (<2km), Newfield Engineers (<2km), Festo (<2km), Geltec (<12km), Apotex Research-Gate 3 (<3km), Sobha Interiors (<4km), Veerasandra Kssidc Industrial Estate (... Omax Autos (<4km)

### Recreation

DECATHLON (<2km), Cycle World (<9km)

[more..](#)

## Locality Reviews

Bommasandra Industrial Area, Bangalore

Very good for industrialists garments Lot of MNC companies are in side the indl area. Bus facilities are good next Metro is on the way there are lot of residential apartments also available good road infrastructure and many more

#### Pros:

- Near by Jigani in electronic city

#### Cons:

- Too much crown some times traffic more

Posted: Mar 1, 2020 by Saravanan raman

Bommasandra is well connected to Bannerghatta ,Anekal and electronic city. It is peaceful and plesant to stay.Roads are wider and good in condition. This place is well connected Jigan town and market .

#### Pros:

- Roads are good
- Well connected to city
- will become popular once STRR Road completes

#### Cons:

- Bit polluted

Posted: Feb 4, 2017 by Svsateesh Sunkara

Bommasandra Industrial Area, Bangalore is rated 7 out of 10 based on 2 user reviews.

Disclaimer: The reviews are opinions of PropertyWala.com members, and not of PropertyWala.com.

### Explore

[Similar Properties](#)

[Properties in Bommasandra Industrial Area, Bangalore](#)

[Projects in Bangalore](#)

[Brokers in Bangalore](#)

### More Information

### Report a problem with this listing

Is this property no longer available or has incorrect information?

[Report it!](#)

**Disclaimer:** All information is provided by advertisers and should be verified independently before entering into any transaction. You may visit the relevant RERA website of your state to verify the details of this property. PropertyWala.com is only an advertising platform to help connect buyers and sellers and is not a party to any transactions, nor shall be responsible or liable to resolve any disputes between them.