

Sky Flama - Sewri, Mumbai



Residential Apartments

3BHK+study room, 1250 sq.ft, semi furnished, no furniture in one bedroom, higher floor, modular kitchen, beautiful done up flat, sea view.

- Project ID : J731191075
- Builder: Sky Flama
- Properties: Apartments / Flats
- Location: Sky Flama, Sewri, Mumbai (Maharashtra)
- Completion Date: Sep, 2011
- Status: Starting

Description

Sky Flama: Beautiful apartment on lease in Sewri. 3BHK+study room, 1250 sq.ft, semi furnished, no furniture in one bedroom, higher floor, modular kitchen, beautiful done up flat, sea view. Excellent play area for children, clubhouse, swimming pool and other amenities. Ideal for a 2-4 member family. Extensive garden, swimming, club and gym facilities in the compound. Availability of water, power and domestic help at all times. In very good condition.

Location Advantages:

- Very close to sewri station (5 minutes walk)
- Bus depot (3 minutes walk).
- Takes 3 minutes by car to reach pd mello road, which connects to vt/nariman point in 25-30 minutes, dadar/parel in 10 minutes, worli in 15 minutes and to bkc in 30-35 minutes.
- Airport: 10.0 Kms
- Railway Station: 1.0 Kms
- Hospital: 1.0 Kms
- City Center: 2.0 Kms
- School: 1.0 Kms
- ATM: 1.5 Kms
- Key Landmarks: Behind itc hotel

Lifestyle Amenities:

- Power Back-up
- Security / Fire Alarm
- Intercom Facility
- Lift(s)
- Reserved Parking
- Visitor Parking
- Swimming Pool
- Park
- Security Personnel
- Maintenance Staff
- Water Storage
- Fitness Centre / GYM
- Club house / Community Center
- Rain Water Harvesting

Features

Luxury Features

- Power Back-up ■ Lifts

Lot Features

- Balcony ■ Corner Location

Exterior Features

- Reserved Parking ■ Visitor Parking

Maintenance

- Water Supply / Storage

Other features

- Security / Fire Alarm ■ Private Garden / Terrace

Security Features

- Security Guards ■ Electronic Security

Interior Features

- Woodwork ■ Modular Kitchen
- Feng Shui / Vaastu Compliant

Recreation

- Swimming Pool ■ Park ■ Fitness Centre / GYM
- Club / Community Center

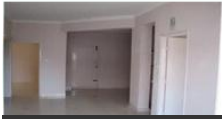
Land Features

- Clear Title ■ Freehold Land ■ Plot Boundary Wall
- Society Boundary Wall ■ Corner Plot
- Feng Shui / Vaastu Compliant
- Club / Community Center ■ Adjacent to Main Road
- Water Connection ■ Electric Connection
- Close to Hospital ■ Close to School
- Close to Shopping Center/Mall

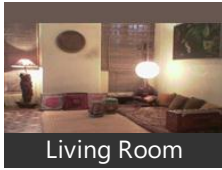
- Security Personnel ■ Water Storage
- Club house / Community Center
- Society Name: Sky Flama ■ Possession: Immediate
- Ownership: Freehold
- Age of Property: Less than 5 Years

Gallery

Pictures



Interior View



Living Room

Location

Landmarks

Transportation

Centaur Airport Hotel (<5km), August 18 Shivaji International Airpo... Hotel Airport Bank (<15km), Santa Cruz And Sahar Airport (<16km. Shortcut To Domestic Airport (<16km. Mumbai Airport (<17km), Chatrapati Shivaji International Airpo.. Mumbai Airports (<17km), Santa Cruz And Sahar Airport (<17km. Chatrapati Shivaji International Airpo.. Cotton Green Railway Station (<2km), Cotton Green Foot Over Bridge Near... Reay Road Railway Station (<2km), Sewri Railway Station (<3km), Sewree Railway Station Mumbai 4000.. Dockyard Road Railway Station (<4km Chinchpokhali Railway Station (<4km. Taxi Stand (<4km), Mumbai-Pune Taxi Tourist Service C... Sewree Bus Depot (<3km), B E S T Bus Depot (<3km), Azad Nagar Bus Depot (<3km), Jijamata Udyan Bus Station (<3km), Maharana Pratap Chowk (Mazagoan... Bus Stop (<5km), Ferry Wharf Bus Station (<5km), St Bus Station And Allied Users (<5km. Bus Station (<5km)

Banks & ATMs

State Bank Of India Atm (<2km), Abhyuday Co-Operative Bank Ltd At... Hdfc Atm (<3km), Hong Kong Bank Atm (<3km), State Bank Of India Atm (<3km), Citibank Atm (<4km), Saraswat Bank Atm (<4km), Uti Atm (<4km), Icici Atm (<4km), Abhyuday Co-Operative Bank Ltd (<... Union Bank (<2km), Union Bank Of India (<2km), Janata Sahakari Bank (<2km), Jila Mumbai Madhyavarti Bank Shakh. Nax - Your Document Bank (<2km), The Sayra Sahakari Bank Ltd (<3km), Sewree West State Bank Of India (<3k..

Markets & Shopping Malls

Popat Food Mall (<5km), Dlf Mall (<5km), Shopping Mall (<5km), Bharatkshetra Sarees Shopping Mall ... Citi Centre Mall (<6km), Acr Bazar (Pvt) Ltd (<2km), Vijay Collection (<3km), Mazgaon Shopping Complex (<3km), Elite Collection (<4km), Shopping Centre Welfare Centre And.. Shankeshwar Shopping Center (<4km. Municipal Market (<4km), Shetty Market (<4km), Mashan Shopping Centre (<4km)

Hotels & Guest Houses

Surya Prakash Hotel (<1km), Hotel Sitaram (<1km), Sujala Refreshment Hotel (<2km), Hindu Hotel (<2km), Pais Hotel (<2km), Hotel Goverdhan (<2km), Saraswati Hotel (<2km), Anand Vihar Hotel (<2km), Hotel Shri Krishna (<2km), Bajrang Hotel (Katkar) (<2km), Awadh Mahal Guest House (<5km), Venu Guest House (<5km), Maharashtra Guest House (<5km), Kamani Guest House (<5km), Guest House (<5km), Dwaraka Guest House (<5km), Al Rafiq Guest House (<5km), Shabnam Guest House (<5km), Salman Guest House (<6km), Royal Guest House (<6km)

Restaurants & Clubs

Sujala Restaurant (<2km), Sdand Bar And Restaurant (<2km), Bharat Bhavan Restaurant (<2km), Britannia Restaurant (<2km), Anand Bihar Restaurant (<2km), Good Hope Restaurant (<2km), Shiv Mahal Bar And Restaurant (<2km Best Punjab Restaurant (<2km), Darbar A Hind Restaurant (<2km), Hydari Restaurant (<3km), J.N.Sports Club (<2km), National Sports Club (<2km), Vinor Sports Club (<2km), Boss Sports Club (<3km), Matharpakadi Club (<3km), Pravin Sports Club(E Block) (<3km), Sadiq Carrom Club (<3km), Durgamata Sports Club (<3km), St. Theresa Club (<3km), Chandor Club (<4km)

Movie Halls

Super Cinema (<2km), Star Cinema (<3km), Jai Hind Cinema (<3km), Jay Hind Cinema (<3km), Ganesh Cinema (<4km), Bharatmata Cinema (<4km), Regal Cinema (<4km)

Parks

Suraj Water Park (<2km), Aids National Park. (<3km), Poonam Park (<3km), Park View (<3km), Maulana Abdul Kamal Azad Park (<3... Nirmal Park(Railway Colony) (<3km), Hotel Royal Park (<4km), Shrio Mothisa Jain Park (<4km), Jain Park And Temple (<4km)

Hospitals & Clinics

Mahavir Hospital Royal Gardan (<3km Ahilya Bai Hospital (<3km), Ahilyabhai Holkar Hospital (<3km), Maratha Hospital Compound (<3km), Staff Quarters (<3km), Building 35 (<3km), Animals Hospital (<3km), Veterinary Hospital Parel (<3km), Gandhi Hospital (<3km), Masina Hospital (<3km), Fover Unloss Clinic (<2km), Dr.Mhatres Clinic (<2km), Adarsh Jain Health Centre (<3km), Kazi Clinic And Sarkar Residency Ban... Om Siddhi Ayurvedic Clinic (<3km), Drushti Diagnostic Centre (<3km), Shah Clinic (<4km), Sampati Clinic (<4km), Shree Ashish Aushadhi Bhandar (<4k..

Offices

Controller Of Telecom Stores Office ... Sanitary Inspectors Office Mbpt.(Shri... Post And Telegraph Office (<2km), Mulund West Fire Station (<2km), Acp Bhoiwada Division Office (<2km... Adv Office (<2km), Bajaj Electricals Ltd - Reay Road Offic.. Sunil Mores Office (<3km), Post Office (<3km), K K Towers (Abhyudaya Co Op Bank...

Schools & Colleges

Tata Municipal Primary School (<1km Faiba Wimlaben Blind High School (<. Jai Vakeel Special School (Mithelesh ... Sewree Cotton Green School (<2km), Swami Vivekananda School (<2km), Sarva Janik Bal Mandi School (<2km), Savitri Bai Phule Training School (<2... A.E.S. High School. (<2km), Muncipal School (<3km), Municipal Primary School (<3km), Lbs Camsar (Nautical College) (<1km. Lbs College New Hostel (<1km), Lbs College Of Advanced Maritime S... College Of P And S M (<2km), Vet College Hostel (<3km), Bombay Veterinary College Parel Pan... Veterinary College Staff Quarters (<3... N R Swamy College (<4km), Maharshi Dayanand College (<4km)

* All distances are approximate

Properties

Type	Area	Possession	Price *
4BHK Apartment / Flat	2150 SqFeet	-	₹ 4.1 crores

* Data has been collected from publicly available sources and may not be up to date.

Sky Flama News

Expert Reviews on Sky Flama

Explore

[Projects in Mumbai](#)

[Brokers in Mumbai](#)

More Information

Report a problem with this listing

Is any information on this page outdated or incorrect?

[Report it!](#)

Disclaimer: All information is provided by builders, advertisers, or collected from publicly available sources and may not be verified as per RERA guidelines. Any information provided on this website, including facts and figures, should be verified independently before entering into any transaction. PropertyWala.com is only an advertising platform to help connect buyers and sellers and is not a party to any transaction, nor shall be responsible or liable to resolve any disputes between them.