

Manyata Earthsong - Devanahalli, Bangalore



Beautiful Apartments with pleasant environment

Manyata Earthsong by Manyata Developers Pvt Ltd at the very prime location of Kempathimmanahalli, Devanahalli in Bangalore offers residential project that host plots in various sizes.

- Project ID: J118956631
- Builder: Manyata Developers Pvt Ltd
- Location: Manyata Earthsong, Kempathimmanahalli, Devanahalli, Bangalore - 562110 (Karnataka)
- Completion Date: Dec, 2019
- Status: Completed

Description

Manyata Earthsong by Manyata Developers Pvt Ltd is conveniently situated at Kempathimmanahalli, Devanahalli, Bangalore. The project is spread over 1162 - 4760 sq. ft. comprising of plots in various sizes. The project is well equipped with amphitheater, banquet hall, party lawn, zen garden, pool deck and bar, Swimming Pool and nearby connectivity such as schools-colleges, hospitals, metro connectivity public transport etc.

Rera Id: PRM/KA/RERA/1250/303/PR/180518/001740

Amenities:

- Garden Decks
- Zen Garden
- Meditation Garden
- Dedicated pet park
- Banquet Hall
- Party Lawn
- Wedding Courtyards
- BBQ and Picnic Areas
- Natural Ponds
- Amphitheater
- Swimming pool
- Pool deck and bar

Manyata Developers Pvt Ltd is a pioneering real estate development firm that was founded by Reddy Veeranna with a vision to create quality infrastructure across residential, commercial and mixed-use developments in India. With the right people, resources and thought capital, Manyata explores the many possibilities of a property and its power to impact businesses and the society. With over 4 decades of extensive experience, knowledge and informed perspectives in real estate and infrastructure industry.

Features

Exterior Features

- Reserved Parking

Maintenance

- Rain Water Harvesting

Recreation

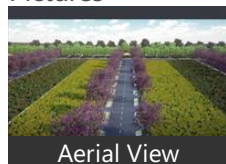
- Swimming Pool
- Park
- Club / Community Center

Land Features

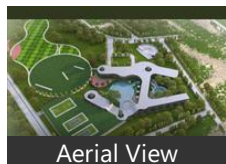
- Club / Community Center
- Water Connection
- Electric Connection
- Close to Hospital
- Close to School
- Close to Shopping Center/Mall

Gallery

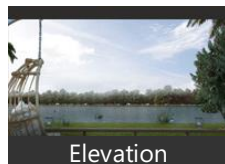
Pictures



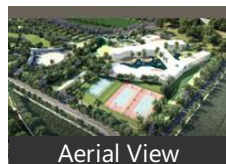
Aerial View



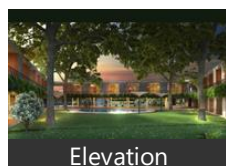
Aerial View



Elevation



Aerial View



Elevation



Swimming Pool

Floor Plans



Master Plan



Location Map

Location

Landmarks

Hotel

Clarks Exotica (<3km), Hotel Presidency (<5km), Olde Bangalore Hotel & Resort (<6km Chairman, Arra Suites (<11km), Chairman, S R Comforts (<5km), Goldfinch Retreat Bengaluru (<5km), Shivas Gateway (<5km), Oyo 63776 Sparrow Suites (<5km), Shivas Galaxy (<5km), Regenta Inn Airport Road Bengaluru ... Purple Cloud Hotel (<5km), Ample Inn (<6km), Royal LOTUS View Resotel (<6km), Oyo 9059 Airport Residency (<7km), Hotel Airport City (<7km), Airport Regency (<8km), Gatewat Suites (<8km), Hotel Terminal View (<9km), Surya Inn (<9km), Oyo 8845 Airport Ac Transit Stay (<1... NPG Hotel (<10km), Ranna Northgate (<10km), Orange Suites (<10km), Breeze Suites (<10km), Zions Hotel (<10km), Hotel Avora Tree (<10km), Jade 735 (<3km), Lotus 418 (<3km), The Sweet Homes (<11km), Taj Hotel (<11km), SM Royal Stay (<11km), Ample Mint (<11km), Arna Hotel (<11km), Cian Suites (<11km), Airport Residency (<11km)

Recreation

Club Cabana (<3km), Decathlon Sports India (<9km), Devanahalli Fort (<10km), Jade Club (<3km)

Public Transport

Kempegowda International Airport (B. International Airport Bus Terminus C... Devanahalli Bus Stand (<11km)

Hospitals & Clinics

Akash Hospital (<10km), Shri Muthyalammadevi Clinic (<2km.. Manjunatha Clinic (<2km), Shri Shrinivasa Clinic (<2km), Primary Health Centre (<3km), Mother Theresa Hospital (<4km), Mother Theresa Hospital-ER (<4km)

Building

Swiss Town (<3km), Ozone Urbana-Main Entrance 1 (<4k... Nitesh Long Island (<13km), Aishwarya Evergreen (<1km), Valueport Phase I (<2km), Excise Layout (<2km), Veda Enclave (<3km), Hollywood Town (<3km), Ozone Jeena (<3km), Ozone Urbana-Entrance 1 (<3km), Hollywood Apartment (<3km), Ozone Urbana Aqua (<3km), Pioneer House (<3km), Ozone Serene (<3km), Ozone Group Urbana Aqua (<3km), Tejas Villa (<3km), Jade Gardens (<3km), Mulberry Meadows (<3km), Amulya Valais (<4km), Sobha Landscape (<4km), Asset, Sobha Canvas (<4km), Ozone Urbana Avenue (<4km), Urbana Pavilion (<4km)

Post Office

Post Office-Devanahalli (<11km)

Business & Services

Itc Factory (<6km)

Restaurant & Shops

Grover Zampa Vineyards (<14km), Mathru Glass Plywood & Hardware (... Sri Chanakeshva Hardware & Paints ... Srithrimala Hardware Electricals and ... Sri Channakeshava Hardware & Pain... Thirumala Enterprises (<3km), Radha Krishna Glass & Plywood (<3k... Illusion (<3km), Blue Alps (<3km), Sri Lakshmi Narasimha Concrete Blo... Shri Krishna Garden (<5km)

Other features

Forest, Forest

Heath or Other Vegetation

Coconut Groove (<2km), Plantation (<4km)

ATM/Bank/Exchange

State Bank of India-Sadahalli (<2km), State Bank of India (<2km), HDFC Bank (<2km), HDFC Bank-Sadahalli (<2km), Indian Bank (<4km), Canara Bank-Kannamangala (<4km)

Accommodation

Menezes Luxury Service Villa (<3km)

Landmark/Attraction

Jama Masjid (<4km)

Petrol Station

Indian Oil Corporation (<4km)

* All distances are approximate

Properties

Manyata Earthsong News

Expert Reviews on Manyata Earthsong

Explore

[Projects in Bangalore](#)

[Brokers in Bangalore](#)

More Information

Report a problem with this listing

Is any information on this page outdated or incorrect?

[Report it!](#)

Disclaimer: All information is provided by advertisers, including builders/agents/owners, or collected from publicly available sources and may not be verified under RERA. Any information provided on this website, including facts and figures, should be verified independently, including via the relevant RERA website, before entering into any transaction. PropertyWala.com is only an advertising platform to help connect buyers and sellers and is not a party to any transaction, nor shall be responsible or liable to resolve any disputes between them.

[Home](#) » [Bangalore Real Estate](#) » [Projects in Bangalore](#) » [Manyata Earthsong - Devanahalli, Bangalore](#)