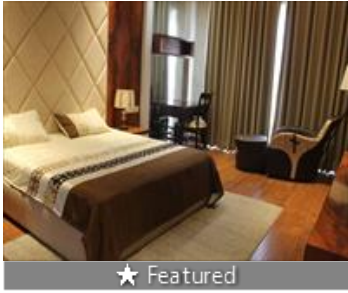


4 Bedroom Apartment / Flat for sale in MB Beverly Golf Avenue, Sector 6.. 1.95 crore



★ Featured

- 4 Bedroom Apartment For Sale In Mohali**
MB Beverly Golf Avenue, Sector 65, Mohali - 160047 (Ch...
- Project/Society: [MB Beverly Golf Avenue](#)
 - Area: 3140 SqFeet ▾
 - Bedrooms: Four
 - Bathrooms: Four
 - Floor: First
 - Total Floors: Eleven
 - Facing: East
 - Furnished: Semi Furnished
 - Transaction: New Property
 - Price: 19,500,000
 - Rate: 6,210 per SqFeet
 - Age Of Construction: Under Construction
 - Possession: Within 6 Months

Advertiser Details

ALEXA Real Estate
Alexan Real Estate
Owner/Proprietor
Sector 119, Mohali
mob: 9888764155
tel: 9569071155
mail:
www.propertywala.com/alexan-real-estate

Scan QR code to get the contact info on your mobile
[View all properties by Alexan Real Estate](#)

Description

Beverly Golf Avenue is one of the popular residential project, strategically located Offering 4bhk apartment choices. Beverly Golf Avenue brings you Mohali's ultra-luxury apartments situated at Sector 65, Mohali. A one-of-a-kind residential project spread across 7 acres of lush green space and offer 424 Vaastu Compliant, luxury homes in Chandigarh. Every fully air-conditioned flat for sale comes with great views, the finest finishes and a collection of unmatched amenities ushering in an atmosphere of satisfaction -- a feeling of being surrounded by every want imaginable! There are spacious balconies, where you can enjoy a breath of fresh air at any hour of the day coupled with sublime amusement.

When you call, please mention that you saw this ad on PropertyWala.

Features

- | | |
|--|---|
| <p>General</p> <ul style="list-style-type: none"> ■ Power Back-up ■ Centrally Air Conditioned ■ Room AC ■ Lifts ■ High Speed Internet ■ Wi-Fi <p>Lot</p> <ul style="list-style-type: none"> ■ Balcony ■ Corner Location <p>Exterior</p> <ul style="list-style-type: none"> ■ Reserved Parking ■ Visitor Parking <p>Maintenance</p> <ul style="list-style-type: none"> ■ Water Supply / Storage ■ RO System ■ Water Softner ■ Rain Water Harvesting ■ Waste Disposal | <p>Security</p> <ul style="list-style-type: none"> ■ Security Guards ■ Electronic Security ■ Intercom Facility ■ Fire Alarm <p>Interior</p> <ul style="list-style-type: none"> ■ Woodwork ■ Modular Kitchen ■ Marble Flooring ■ Granite Flooring ■ Wooden Flooring ■ Fly Proofing ■ Feng Shui / Vaastu Compliant <p>Recreation</p> <ul style="list-style-type: none"> ■ Swimming Pool ■ Park ■ Fitness Centre / GYM ■ Club / Community Center |
|--|---|

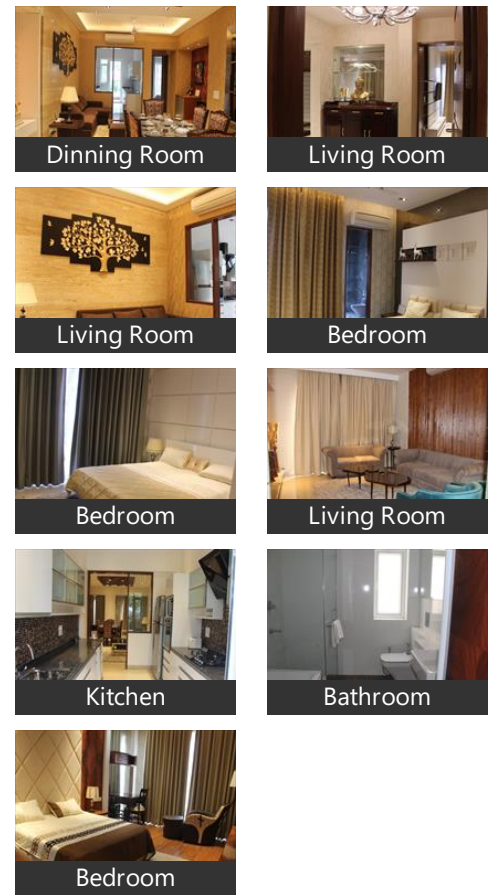
Location

* Location may be approximate

Landmarks

- Hospitals & Clinics**
- Navjot Singh (<0.5km), Lady Doctor Clinical Lab (<0.5km), Ek Noor Healing Charitable Nature C...
Shri Guru Amardas Charitable Comp... Dental O. P. D (<0.5km), Ent Hospital (<0.5km),
Madhavbaug Ayurvedic Panchakarm.. Patanjali Chikitshlaya (<0.5km), Dr Sharmas Dental Clinic (<0.5km),
Eye Care Center (<0.5km), Jeet Opticians (<0.5km), Ardaas Diagnostic Centre (<0.5km),
HLTH Clique Multispeciality Clinic (<.. Pall Dental Clinic (<0.5km), Nav Deep Laboratory (<0.5km),
Goyal Medicentre (<0.5km), Dr Lal Pathlabs (<0.5km), Crown Bridge Implant Orthodontic C...
32 Dental Clinic (<0.5km), Civil Dispensary (<0.5km), Chahal Hospital (<0.5km), Clove Dental (<0.5km),

Pictures



Project Pictures



Ahuja Clinic (<0.5km), Krishna Optical (<0.5km), Landmark Dental Care (<0.5km)

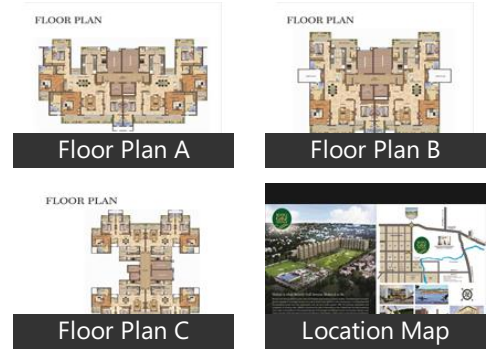
* These pictures are of the project and might not represent the property

Restaurant & Shops

Preet Pagdi Centre (<0.5km), Gill Cloth House (<0.5km), Gulati Garments (<0.5km), Sachdeva Selections (<0.5km), Malhotra Karyana Store (<0.5km), Kour Fashion Boutique (<0.5km), Jas Boutique (<0.5km), Sirjan Boutique (<0.5km), Barcelona (<0.5km), Lovely Fashion Mall (<0.5km), Sandeep Cloth Shop (<0.5km), Sukhmani Boutique (<0.5km), Shiv Garments (<0.5km), Aaina (<0.5km), Relaxo (<0.5km), Nikhil Garments (<0.5km), Sonu Garments (<0.5km), Gurpreet Footwear (<0.5km), Sabharwal Super Market (<0.5km), Bontons Boutique (<0.5km), Rawat Footwear (<0.5km), M R Footwear (<0.5km), Kamal Dupatta (<0.5km), Swami Garments (<0.5km), Sahib Garments (<0.5km), Singla Super Market (<0.5km), Prince Handloom (<0.5km), Khanna Garments (<0.5km), Friends Handloom (<0.5km), Amit Stationery (<0.5km), Prince Undergarment (<0.5km), Mittal Bartan Store (<0.5km), Jaskiran Boutique Designer (<0.5km), Arundeeep Textiles (<0.5km), Shashi Boutique & Cloth House (<0.... Munish Kriyana Store (<0.5km), Dream Collection (<0.5km), Roshni Boutique (<0.5km), Zarina Raj School Uniform (<0.5km), Satnam Boutique (<0.5km), Guru Kirpa (<0.5km), A P Garments (<0.5km), Sheetal Boutique (<0.5km), Super Fine Boutique (<0.5km), More Supermarket (<0.5km), Avitex (<0.5km), Shri Mahalaxmi Confectioners (<0.5k... Sodhi Boutique (<0.5km), Jasmeen Boutique (<0.5km), Avitex Shopping Centre (<0.5km),

[more...](#)

Project Floor Plans



* These floor plans are of the project and might not represent the property

Explore

- [Similar Properties](#)
- [Properties in Sector 65, Mohali](#)
- [Projects in Mohali](#)
- [Brokers in Mohali](#)

More Information

Report a problem with this listing

Is this property no longer available or has incorrect information?
[Report it!](#)

Disclaimer: All information is provided by advertisers and should be verified independently before entering into any transaction. You may visit the relevant RERA website of your state to verify the details of this property. PropertyWala.com is only an advertising platform to help connect buyers and sellers and is not a party to any transactions, nor shall be responsible or liable to resolve any disputes between them.