

## Emaar MGF Palm Terraces - Sector-66, Gurgao..



### Low Rise Luxury Residences

Emaar MGF Palm Terraces promises to offer a lifestyle currently limited to only the finest addresses of South and Central Delhi, one that is defined by greenery, wide-open spaces and an uplifting sense of safety and security.

- Project ID : J310263119
- Builder: Emaar Group
- Properties: Apartments / Flats
- Location: Emaar MGF Palm Terraces, Sector-66, Gurgaon - 122001 (Haryana)
- Completion Date: Sep, 2011
- Status: Started

## Description

**Emaar MGF Land Limited**, one of India's leading real estate developer is a joint venture between MGF Developments Limited and Emaar Properties PJSC (Emaar) of Dubai. Emaar is one of the world's foremost real estate companies with operations in 16 countries. MGF has over the last 10 years established itself as one of the key players in retail real estate development in India. The Company commenced operations in India in February 2005. Its primary business is development of properties in residential, commercial, retail and hospitality sectors. In addition, it has also identified healthcare, education and infrastructure as business lines for future growth. Its operations span across various aspects of real estate development, such as land identification and acquisition, project planning, designing, marketing and execution.

**Emaar MGF Palm Terraces** promises to offer a lifestyle currently limited to only the finest addresses of South and Central Delhi, one that is defined by greenery, wide-open spaces and an uplifting sense of safety and security. Undoubtedly the perfect home for you and your loved ones. Walk into your home and experience a great sense of space. Enjoy the feeling of luxury, quality and workmanship. And prepare to be welcomed by greens as you step out. Palm Terraces promises to offer a lifestyle currently limited to only the finest addresses of South and Central Delhi, one that is defined by greenery, wide-open spaces and an uplifting sense of safety and security. Undoubtedly the perfect home for you and your loved ones.

### Amenities & Specifications:

- Swimming Pool
- Gymnasium
- Kid's Play Area
- Sports Facility
- Private pool
- Jacuzzi
- Sauna
- Spa Center
- Personal gym and Home Theater
- Indoor Bar Counter
- Terrace Garden within residential unit
- Party Lawn
- Club
- Health & Reflexology Zones
- Youth Corner
- French Landscaping
- Fountains.

## Features

### Luxury Features

- Power Back-up ■ Centrally Air Conditioned
- RO System ■ Water Softner

### Lot Features

- Private Terrace ■ Balcony ■ Private Garden

### Exterior Features

- Reserved Parking ■ Visitor Parking

### Maintenance

- Maintenance Staff ■ Water Supply / Storage
- Rain Water Harvesting ■ Waste Disposal

### Land Features

- Feng Shui / Vaastu Compliant
- Club / Community Center ■ Adjacent to Main Road
- Water Connection ■ Electric Connection
- Close to Hospital ■ Close to School

### Security Features

- Security Guards ■ Electronic Security
- Intercom Facility ■ Fire Alarm

### Interior Features

- Woodwork ■ Modular Kitchen
- Feng Shui / Vaastu Compliant

### Recreation

- Swimming Pool ■ Park ■ Fitness Centre / GYM
- Club / Community Center

### Commercial Features

- Cafeteria / Food Court

### Other features

- Security / Fire Alarm ■ Private Garden / Terrace
- Corner Flat / House / Plot ■ Lift(s)
- Security Personnel ■ Water Storage
- Club house / Community Center

- Close to Shopping Center/Mall

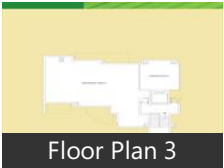
- Booking Amount: Rs. 1000000
- Society Name: Palm Terraces Select ■ Flooring: Wood
- Furnish: Furnished ■ Additional Rooms: Study Room
- Servant Room ■ Transaction: New Property
- Ownership: Freehold
- Age of Property: Under Construction
- Total Floors in Complex: 10

## Gallery

### Pictures



### Floor Plans



### Documents



## Location

## Landmarks

### Transportation

International Airport Authority Of Ind.. Lnt Site Office For International Airpo.. New Intergrated Terminal For Indira ... Terminal City Bus Igi Airport (<26km), Car Parking International Airport (<2... Airport Authority Office (<26km), Arrival And Departure Area (<26km), Indira Gandhi International Airport In... Stp (Airport) (<27km), Orchid (<16km), Taxi Stand (<19km), Basai Dhankot Railway Station (<14k... Railway Station (<16km), Gurgaon Railway Station (<16km), Railway Station Garhi Harsaru (<18km. Bijwasan Railway Station (<22km), Auto Stand For Bus Stand (<5km), Ryans Bus Parking (<6km)

### Banks & ATMs

Bank Of India (<7km), Icici (<8km), Uno Bank (<8km), State Bank Of Hyderabad (<9km), Somko Bank (<9km), Icici Atm (<9km), Corporation Bank Atm (<9km), Canara Bank Sector 10 - A (<9km), Centurion Bank Of Punjab Ltd. Co Gu. Bank Of Punjab Ltd (<10km), Uti Atm (<9km), Hdfc Atm (<10km), Icici Bank Atm - Chetan Mahajan (<1.. Uti Bank Atm - Chetan Mahajan (<10.. Uti Atm (<10km), State Bank Of India Atm (<10km), Icici Bank And Atm (<10km)

## Hotels & Guest Houses

Hotel Hillton (<6km), Lee Guest House (<10km), Pasricha Guest House (<11km)

## Markets & Shopping Malls

Unitech Shopping Plaza (<4km), Omaxe Plaza Mall (<3km), Niho Scottish Mall (<4km), Omaxe House To Home Mall (<4km), Raheja Mall (<5km), Omaxe Wedding Mall (<5km), Rheja Mall (<5km), Omaxe Mall (<6km)

## Restaurants & Clubs

South Club (<4km), South City-li Club (<4km), Malibu Towne Club (<5km), Malibu Club (<5km), Hill Stone Restaurant (<6km)

## Movie Halls

Dev Cinema (<11km), Ajit Cinema (<11km), Raj Cinema (<12km)

## Parks

Park View City li (<2km), Bestech Park View li (<2km), Park View City - I (<2km), Spaze It Park (<3km), Tech Park (<4km), Central Park li (<5km), Beer Wala Park (<6km)

## Hospitals & Clinics

Dr. Payal Mittal Dental Clinic (<8km), The 32 Pearls Dental Clinic (<8km), Stone Clinic (<9km), Pearl Dental Clinic (<9km), R\_d\_p\_lab\_clinic (<9km), Veterinary Hospital (<9km), Nand Clinic (<9km), A-One Diagnostic Centre (<10km), Health Center (<10km), Sanyal Polyclinic And Wellness Centr.. Sai Hospital (<1km)

## Schools & Colleges

Ryan International School (<6km), School For The Blind (<6km), Ryan Internetal School (<6km), College Of Vijay Mahalwal(B-Tech--E.. Apeejay Institute Of Management (<... Mdu National Law College (<9km), National Institute Of Hotel Managem.. Law College(IImS) (<9km), Ansal Institute Of Technology (<11km), Government College (<11km), Government Degree College (<12km), Anupam Institute Of Management (<...

## Offices

Unitech Project Office (<4km)

\* All distances are approximate

## Properties

Type	Area	Possession	Price *
3BHK Apartment / Flat	1900 SqFeet	-	₹ 1.58 crore
3BHK Apartment / Flat	2125 SqFeet	-	₹ 1.91 crore
4BHK Apartment / Flat	2100 SqFeet	-	₹ 1.52 crore
4BHK Apartment / Flat	2100 SqFeet	-	₹ 1.52 crore

\* Data has been collected from publicly available sources and may not be up to date.

## Properties available in 'Emaar MGF Palm Terraces'

### 3 Bedroom Flat for sale in Emaar MGF Palm Terraces, Sector.. 1.65 crore



1950 SqFeet Apartment @ Rs.8462/SqFeet

ID: P2937927 — Posted: 10 days ago by [Anil kumar](#)

Newly Constructed Luxurious Apartment in Palm Drive (Emaar MGF Palm Terraces)

Emaar MGF has delivered, Emaar Palm Drive in the prime location of Sector-66, Gurgaon. Now, be the owner of luxurious Studios, 1BHK, 2BHK, 3BHK, 4BHK, 5BHK apartment, villas, floors and shops at an affordable price list to cater the requirement of numerous income group. The project is ... [more details](#)

## Emaar MGF Palm Terraces News

## Expert Reviews on Emaar MGF Palm Terraces

### Explore

[Projects in Gurgaon](#)

[Brokers in Gurgaon](#)

### More Information

### Report a problem with this listing

Is any information on this page outdated or incorrect?

[Report it!](#)

**Disclaimer:** All information is provided by builders, advertisers, or collected from publicly available sources and may not be verified as per RERA guidelines. Any information provided on this website, including facts and figures, should be verified independently before entering into any transaction. PropertyWala.com is only an advertising platform to help connect buyers and sellers and is not a party to any transaction, nor shall be responsible or liable to resolve any disputes between them.