

3 Bedroom Independent House for sale in Wagholi, Pune

1.4 crore



Beautiful 3BHK Row House With Beautiful Front Garden And Spacious Backyard For Sale

Emerald Isle, Wagholi, Pune - 412207 (Maharashtra)

- Area: 1650 SqFeet ▼
- Bedrooms: Three
- Bathrooms: Three
- Floor: Ground
- Total Floors: Two
- Facing: South
- Furnished: Unfurnished
- Transaction: Resale Property
- Price: 14,000,000
- Rate: 8,485 per SqFeet ^{-10%}
- Age Of Construction: 10 Years
- Possession: Immediate/Ready to move

Description

Looking for your dream home? This stunning 3BHK row house with a cute front garden and spacious covered backyard could be your perfect match!

Conveniently located just a short walk away from Nagar road and Wagheshwar temple (approx. 300 m) and adjacent to Abhishek lawns, this South facing 1550 sqft. home offers both comfort and convenience.

This is an independent Row House with boundary walls all around the property and an iron gate to access the property. It is inside a gated compound of 80+ row houses and the society is located just 300 m off Nagar road and within 15-20 minute driving distance of Pune airport.

The Row House comes in two floors and comprises of 3 large and spacious bedrooms. In the ground floor there is one bedroom, a large living room connected to a spacious dining room and further connected to an open kitchen; it has doors both to the front and back, and a common bathroom to adjacent to the dining space.

Stairs from the living room go up to the first floor which has two bedrooms with each of them having an attached bathroom. This floor also has an open spacious balcony. The stairs further go up to the second floor which is an open terrace.

Key Features:

1. Prime location with easy access to Nagar road.
2. Spacious parking area for car and bike.
3. Auspicious row house number.
4. Plot area is 1650 sqft and house is built-up on 700 sqft.
5. Internal carpet area of more than 900 sqft.

Nearby Amenities:

1. D-Mart nearby for convenient shopping.
2. Multiple schools within a 3km radius.
3. Easy access to public transportation with more than 55 buses plying at the nearby stoppage.

When you call, don't forget to mention that you saw this ad on PropertyWala.com.

Features

Security

- Security Guards

Interior

- Woodwork
- Modular Kitchen
- Marble Flooring
- Wooden Flooring
- Fly Proofing
- Feng Shui / Vaastu Compliant

Recreation

- Park
- Club / Community Center

Lot

- Private Terrace
- Balcony
- Private Garden
- Park Facing

Exterior

- Reserved Parking
- Visitor Parking

Maintenance

- Maintenance Staff
- Water Supply / Storage
- RO System
- Rain Water Harvesting
- Waste Disposal

Location

Advertiser Details

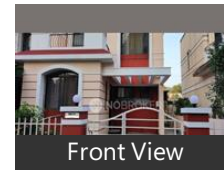
DEEPAK ROUT
Banking Professional

Billamaranahalli, Bangalore
mob: 9686216386
tel: +1-9056094383
mail:
www.propertywala.com/U43189969



Scan QR code to get the contact info on your mobile

Pictures



Front View



Elevation



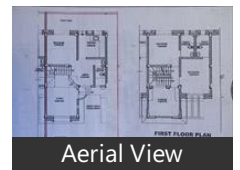
Living Room



Drawing Room



Kitchen



Aerial View

* Location may be approximate

Landmarks

Hospitals & Clinics

Thyrocare (<0.5km), Shatayu Homeopathy Clinic (<0.5km.. Vaishali Clinic (<0.5km), Niramay Homeopathic Clinic (<0.5km Anjali Clinic (<0.5km), Satav General Hospital Prasutigruh (<0.5km), Satav General Hospital Prasutigruh-E... Shree Wagheshwar General Hospital ... Shree Wagheshwar General Hospital-.. Ayush Hospital (<0.5km), Nathshri Clinic (<0.5km), Shri Krishna Tours & Travels (<1km), Shree Samarth Hospital-ER (<1km), Shourya Pathology (<1km), Aakansha Opticals (<1km), Devki Clinic & Medicals (<1km), Shri Clinic (<1km), Mukta Dental Clinic (<1km), Shree Samarth Hospital (<1km), Wagheshwar Pathology Lab (<1km), Pipal Healthcare (<1km)

Restaurant & Shops

Hariom Collection (<0.5km), Manish Provision Stores (<0.5km), Nalini Creation (<0.5km), Shlok General Stores (<0.5km), Ramdev Traders Kirana (<0.5km), Mahadev Super Market (<0.5km), Shri Datta Provision Stores (<0.5km), Amol Provision Stores (<0.5km), Shri Gatoni Cloth Center (<0.5km), Jay Bhavani Traders (<0.5km), Lady Boutique (<0.5km), Sitamata Trading Company (<0.5km), Jayhari General Store (<0.5km), Saheli Kirana Stores (<0.5km), Shivani Fashion Designer (<0.5km), Nitin Provision Stores (<0.5km), Mahesh Enterprises (<0.5km), Aaditya Kirana & General Stores (<0.5km), Surbhi Super Market (<0.5km), Laxmi Provision Market (<0.5km), The Brand Town (<0.5km), Sunil Provision Stores (<0.5km), Krushna General Stores & Ladies Dep.. Shri Ram Traders (<0.5km), Dimppal General Stores (<0.5km), Shri Mahalaxmi Super Market (<0.5km New Yog (<0.5km), Lalchand Kantilal Karnavat Super Ma... Sana General Stores (<0.5km), Shivshakti Book Center (<1km), Kirana Bhusar Malache Vyapari (<1km Shweta Ladies Paradise (<1km), Mahalaxmi Ladies Shoepe (<1km), Chaitrali General Stores (<1km), Mahasale Shoes (<1km), New Subhash Market (<1km), Matoshree Super Market (<1km), M. N. Collection (<1km), Jay Bhole Mini Market (<1km), Bansilal Provision Store (<1km), Sayali Ladies Shoepe (<1km), Mahadeo Collection (<1km), Prerana General Stores (<1km), Gayatri Footwear (<1km), Swastik Fashion (<1km), Sargam Cloth Center (<1km) [more...](#)

Locality Reviews

Wagholi, Pune

One of the best society's in Wagholi. All amenities available in the society. Gated security for a family and children with elders and no for pets restriction

Pros:

- *Close to highway and airport*

Posted: Nov 17, 2021 by Punit Pattanshetti

Wagholi is faster growing place

In Wagholi lots of well-known developers

In Wagholi within 5 km 5 international schools

In Wagholi within 5 to 6 km multi specialist hospitals

Near by wagholi there are IT hubs

Pros:

- *In Wagholi stay 3 lakhs above it people*

Posted: Jan 16, 2019 by [Rahul Patil \(Prophunt Advisory\)](#)

Wagholi is a very upcoming area with rapid development, good roads & connectivity to the city Airport & railway station. Ring road which will connect all the highways will be passing through wadbolai near to wagholi and a road connecting EON it park to ring road is under construction.

Pros:

- *Ring road*
- *Cocrete road from Eon IT park to Ring road*
- *New International Schools & Colleges are coming up*

Posted: May 19, 2017 by Feroz Khan

WAGHOLI Located in East Pune, Wagholi is a developing locality of the city. Wagholi has a number of upcoming projects that are available at pocket friendly prices. Because the locality offers affordable residential solutions, the demand in the locality comes from IT professionals. The locality has a well-developed and posh neighborhood. The area is well connected to Khandala Loni Road connecting it to other parts of the city. The locality also has good infrastructure that further smoothens the connectivity.

Pros:

- *Affordable houses*
- *Close proximity to IT and MIDC areas*
- *Educational Hub*

Cons:

- *Improper Water Facility*
- *Unorganized commercials*
- *Internal Roads*

Posted: Apr 5, 2017 by [Rohit Kumar \(Clisaco First Realty\)](#)

WAGHOLI - A budding new township coming up in East Pune. A educational hub with lot of excellent schools and colleges. Lexicon International, Poddar, Prodigy Public School, Sanskriti School to name a few. Moze College of Engineering, GH Rasoni Institute of Engineering and Technology, Shree

Ramchandra College of Engineering, Bhivarabai Sawant Institute of Technology & Research, JSPM'S Imperial College of Engineering & Research, Kautilya Institute of Management & Research and many more colleges. The Wagholi 'Bhaji' vegetable market on Tuesday is a source of fresh vegetables and fruits. The Wagholi market can provide all sorts of needs be it groceries, electricals, households needs, furniture etc. There are many Banks & ATM like, SBI, OBC, BoM, ICICI, IDBI, Canara Bank. Wagholi is well connected by Public transport from Pune Station and Hadapsar. There are plenty of builders who are bringing projects in Wagholi so the availability of flats, bungalows for purchase or rent is also plenty.

Pros:

- Availability of all needs
- Public and Private Transportation
- Near to Airport & Malls

Cons:

- Electricity problem sometimes.
- Water

Posted: Sep 17, 2016 by Balraj Thapa

Wagholi is best location of Pune located 15 minute away from airport and 10 minute ahead from Kharadi Eon IT Park & Reliance Mart. Daily need items accessible with in 500 m. Major Hub for Schools (Lexicon , Podar international & Sanskruti, Moze collage and jsprm collage) All major electricity and water supply connections are already installed.

Pros:

- Best Location of Pune

Posted: May 14, 2016 by Satish Tanwar

Wagholi is becoming educational Hub. Almost 15+ institutes are in just 3 km of area.

Pros:

- Emerging Educational Hub

Posted: Dec 19, 2015 by [Shree Vishnu Realtors \(Shree Vishnu Realtors\)](#)

Wagholi is calm and quiet locality off the Pune - Nagar Road (just 1500 feet away from the main road)

Pros:

- Good societies at your neighbourhood, without slums

Posted: Nov 1, 2014 by Achuthankutty Menon

DP road connecting with Wagholi to EON IT Park, Kharadi and connected to Shikrapur.

Pros:

- Wagholi gaon coming under PMC DP
- Developing at very fast pace.

Posted: Jul 28, 2014 by [Jennifer A \(Gulmohar Development\)](#)

Wagholi is the best place for investment. It is 14 km from Pune station. All facilities available near to Kharadi IT park.

Pros:

- The perfect place
- Maximum returns

Posted: Sep 12, 2013 by [Vishwajit Mohol \(Live Media Advertising\)](#)

Wagholi, Pune is rated 8 out of 10 based on 10 user reviews.

Disclaimer: The reviews are opinions of PropertyWala.com members, and not of PropertyWala.com.

Explore

[Similar Properties](#)

[Properties in Wagholi, Pune](#)

[Projects in Pune](#)

[Brokers in Pune](#)

More Information

Report a problem with this listing

Is this property no longer available or has incorrect information?

[Report it!](#)

Disclaimer: All information is provided by advertisers and should be verified independently before entering into any transaction. You may visit the relevant RERA website of your state to verify the details of this property. PropertyWala.com is only an advertising platform to help connect buyers and sellers and is not a party to any transactions, nor shall be responsible or liable to resolve any disputes between them.