

IBC Diamond District - Kodihalli, Bangalore



Residential Township

Has an open space of 6 acres right in the heart Kodihalli. It is spread over an area of 14.5 Acres. The total units we have available in this project are 917. It includes the commercial area around 5,20,000 Sq Ft.

- Project ID : J560511903
- Builder: India Builders Corporation (IBC) Group
- Properties: Apartments / Flats
- Location: IBC Diamond District, HAL Airport Road, Kodihalli, Bangalore (Karnataka)
- Completion Date: Jul, 1998
- Status: Completed

Description

India Builders Corporation (IBC) Group is one of the renowned Property Developers in South India and has developed aesthetically constructed space spanning over 12 million sqft. By setting stringent standards, IBC Group triggers new trend in property development in South India, especially Bangalore. All development projects have been completed on time /ahead of time schedule. In terms of size, grandeur and quality, all the projects have the unique achievement of completion with a cutting edge on cost on a per sqft basis.

Diamond District has an open space of 6 acres right in the heart of the complex. And with this sort of space, plenty of amenities can be provided to the residents and no efforts have been spared on this front. A residential project that showcase the opulence and grandeur of achievement. It is spread over an area of 14.5 Acres. The total units we have available in this project are 917. It includes the commercial area around 5,20,000 Sq Ft.

Location Advantages:

- Within distance Between 0.5km to 2KM from the project we have Airport like Old Airport .
- Nearest Hospital like Manipal Hospital .
- Within distance Between 5km to 10KM from the project we have Railway Station like Bangalore Strn.

Lifestyle Amenities:

- Garden
- Swimming Pool
- Play Area
- Health Facilities
- Recreation Facilities
- Maintenance Staff
- Security
- Intercom
- Club House
- Wifi
- Cafeteria
- Broadband Internet
- Library
- Tennis Court
- Badminton Court
- Gymnasium
- Bank/Atm

Features

Security Features

- Intercom Facility

Recreation

- Swimming Pool ■ Fitness Centre / GYM

Other features

- Security / Fire Alarm ■ Corner Flat / House / Plot
- Lift(s) ■ Security Personnel ■ Water Storage
- Club house / Community Center
- Maintenance: Rs. 7080(Monthly)
- Booking Amount: Rs. 600000
- Society Name: Diamond District ■ Flooring: Vitrified
- Furnish: Semifurnished ■ Possession: Immediate
- Ownership: Freehold ■ Age of Property: 10-20 Years
- Total Floors in Complex: 8
- Property on Floor: 7th Floor

Exterior Features

- Reserved Parking ■ Visitor Parking

Maintenance

- Maintenance Staff ■ Waste Disposal

Gallery

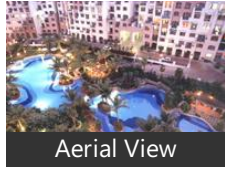
Pictures



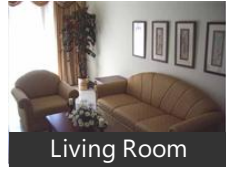
Diamond District



Swimming Pool



Aerial View



Living Room

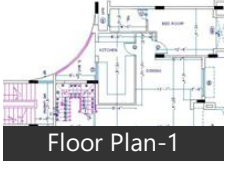


Drawing Room

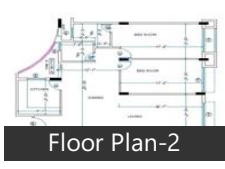


Dinning Room

Floor Plans



Floor Plan-1



Floor Plan-2



Floor Plan-3



Floor Plan-4



Site Plan

Location

Landmarks

Education

Indian Institute of Management Bang. Mount Carmel Institute of Managem.. Rajiv Gandhi University of Health Sci... National Public School (<4km), National Public School (<2km), Christ University (<7km), Baldwin Girls, Kendriya Vidyalaya Malleswaram (<1... B P Indian Public School (<13km), The Cathedral High School (<5km), BGS National Public School (<14km), ST.JOSEPH, Baldwin Boys, Bethany High School (<5km), St. Germain High School (<7km), Vijaya High School (<10km), Kendriya Vidyalaya Hebbal (<14km), J S S Educational Institutions (<12km), Innisfree House School (<12km), The National High School (<11km)

Transportation

Hindustan Aeronautics Limited Airpo.. Leela Palace Bus Stop (<0.5km), BMTC Bus Depot Agara (<6km), Thavarakere Bus Stop (<8km), Navrang (<15km), Serendipity Infolabs Private Limited (... Vasanth Nagar Bus Station (<9km), BIAL - HAL Bus Stop (<4km), Majestic Bus Terminus (<11km), Busstop (<17km), SUTECH SOLUTIONS - Designing the.. HSBC Bus Stop (<13km), Travelocar Bangalore (<9km), ALL TICKET WALA (<10km), om tours & travels (<8km), SRS Travels (<15km), Jayaprakash Nagar (<14km), Jayanagar Metro Station (<11km), KSRTC (<9km), Office (<13km)

Offices

High Court of Karnataka (<8km), German Consulate General (<7km), Passport Seva Kendra (<9km), Domlur Post Office (<1km), Post Office - India Post (<11km), The Richmond Hotel (<6km), Kumaraswamy Layout Police Station... Navata Road Transport (<8km), Indira Nagar Post Office (<4km), India Post (<3km), Fraser Town Post Office (<8km), Adugodi Post Office (<7km), Kathriguppe Post Office (<15km), Chamrajpet Police Station (<12km), Ulsoor Post Office (<4km), Banaswadi Police Station (<9km), Post Office (<13km), Dooravani Nagar Post Office (<9km), Banashankari Post Office (<12km)

Hotels & Guest Houses

The Leela Palace Bengaluru (<1km), The Pride Hotel (<7km), Le Meridien (<10km), ITC Windsor A Luxury Collection Hot.. The Chancery (<7km), The Lalit Ashok Bangalore (<11km), Hotel Novotel Bengaluru Techpark (<. The Chancery Pavilion (<7km), The Monarch Luxur (<7km), Jayamaharal Palace Hotel (<9km), Hyatt Bangalore MG Road (<4km), JW Marriott Hotel Bengaluru (<8km), Nandhini Deluxe (<11km), Hotel Bangalore International (<11km. The Atria Hotel (<9km), The Oberoi Bengaluru (<4km), Ginger Hotel in Whitefield Bangalore... The Solitaire Hotel (<11km), Casa de Bengaluru (<5km), Sheraton Grand Bangalore Hotel at B...

Other features

Bengaluru (<10km)

Banks & ATMs

Citibank (<11km), Fidelity Investments (<2km), LIC of India Divisional Office (<9km), Syndicate Bank (<11km), Standard Chartered (<6km), Corporation Bank (<9km), State Bank of India (<8km), Axis Bank (<7km), KPMG Bangalore (<1km), HDFC Bank (<6km), State Bank of India RACPC 3 (<10km), Deutsche Bank (<5km), YES BANK (<8km), JPMorgan Chase & Co (<8km), State Bank of India (<17km), Praveen LIC (<8km), Citibank ATM (<8km), State Bank of India (<12km), HDFC Bank ATM (<11km), Canara Bank (<11km)

Recreation

M Chinnaswamy Stadium (<7km), Visvesvaraya Industrial and Technolo.. Tipu Sultan, Cubbon Park (<8km), HAL Heritage Centre And Aerospace... Bangalore Football Stadium (<5km), Sree Kanteerava Stadium (<8km), Bugle Rock Park (<12km), Freedom Park (<10km), PVR Cinemas (<6km), Fun World (<11km), Shanthi Nagar Hockey Stadium (<7k... Inox (<6km), Lalbagh Botanical Garden (<9km), Uma Theatre (<12km), Vision Cinemas (<8km), Fun Cinemas (<9km), Cinepolis (<15km), Crimson Art Gallery (<8km), Vaibhav Theatre (<16km)

Religious Places

Infant Jesus Shrine (<4km), St. Mary, Gavi Gangadhareshwara Temple (<1... St. Francis Xavier, Dodda Ganeshana Gudi (<12km), Ragi Gudda Sri Prasanna Anjaneya Sw. Someshwara Temple (<4km), Shri Dharmaraya Swamy Temple (<1... Sri Kaadu Mallikarjunaswamy Temp... St. Marks Cathedral (<7km), Aurobindo Ashram (<12km), ISKCON Bangalore (<16km), Shiv Temple (<2km), ISKCON Bangalore - Sri Jagannath M... Sri Dharmanatha Shwetambar Jain Te.. Ramakrishna Math (<12km), St Lukes Church (<11km), St. Andrews Church (<7km), Gurdwara Sri Guru Singh Sabha (<4k... Choe Khor Sum Ling Centre (<1km)

Shopping

Mantri Square (<12km), Garuda Mall (<6km), Home Town (<8km), Fabindia (<6km), Fabindia (<7km), Just Bake (<5km), Landmark (<6km), Sapna Book House (<10km), Westside (<7km), P N RAO (<6km), Ezone (<16km), Westside (<6km), Lido Mall (<4km), Adyar Ananda Bhavan (<6km), Nilgiris (<1km), Samsung (<10km), Total Super Store (<8km), Phoenix Marketcity (<10km), BIG BAZAAR (<4km), Aircel (<4km)

Hospitals & Healthcare

Hosmat Hospital (<5km), Minto Eye Hospital (<11km), Victoria Hospital (<11km), Nethradhama Superspeciality Eye Ho.. Narayana Nethralaya (<16km), FitnessOne (<5km), The Grand Magrath Hotel (<6km), S D S Tb Sanitorium (<7km), Snap Fitness (<2km), Bangalore Baptist Hospital (<14km), Cloudnine (<10km), Devi Eye Hospital (<4km), Swiss Smile Dental Clinic (<6km), Shekar Nethralaya (<11km), Gold, VLCC (<1km), NU Hospitals (<15km), Dental Solutions (<3km)

Restaurants & Clubs

Hotel Novotel Bengaluru Techpark (<. JW Marriott Hotel Bengaluru (<8km), The Oberoi Bengaluru (<4km), Bengaluru Marriott Hotel Whitefield ... Iris Hotel (<6km), 13th Floor Lounge Bar (<6km), Hotel ibis Bengaluru Techpark (<7km. Olive Bar & Kitchen (<6km), Hotel Moon Light (<13km), Hotel Grand Mercure Bangalore (<5k... Hotel ibis Bengaluru Hosur Road (<9... Sunny, The Only Place (<7km), Barbeque Nation (<1km), Sana-di-ge (<11km), Hard Rock Cafe (<7km), Plan B (<6km), Opus (<11km), Barbeque Nation (<5km), Toit Brewpub (<3km)

* All distances are approximate

Properties

Type	Area	Possession	Price *
2BHK Apartment / Flat	1168 SqFeet	-	₹ 90.5 lakhs
2BHK Apartment / Flat	1421 SqFeet	-	₹ 1 crore
2BHK Apartment / Flat	1430 SqFeet	-	₹ 93 lakhs
2BHK Apartment / Flat	1450 SqFeet	-	₹ 1.1 crore
3BHK Apartment / Flat	1650 SqFeet	-	₹ 95 lakhs
3BHK Apartment / Flat	1700 SqFeet	-	₹ 1.64 crore
3BHK Apartment / Flat	1700 SqFeet	-	₹ 1.1 crore
4BHK Apartment / Flat	3100 SqFeet	-	₹ 2.3 crores

* Data has been collected from publicly available sources and may not be up to date.

IBC Diamond District News

Expert Reviews on IBC Diamond District

Explore

[Projects in Bangalore](#)

[Brokers in Bangalore](#)

More Information

Report a problem with this listing

Is any information on this page outdated or incorrect?

[Report it!](#)

Disclaimer: All information is provided by builders, advertisers, or collected from publicly available sources and may not be verified as per RERA guidelines. Any information provided on this website, including facts and figures, should be verified independently before entering into any transaction. PropertyWala.com is only an advertising platform to help connect buyers and sellers and is not a party to any transaction, nor shall be responsible or liable to resolve any disputes between them.

[PropertyWala.com](#) » [Bangalore Real Estate](#) » [Projects in Bangalore](#) » [IBC Diamond District - Kodihalli, Bangalore](#)