

EIPL La Paloma Villas - Mokilla, Hyderabad



More special & Elite.

Eipl la Paloma Villas by EIPL Group at Mokila in Hyderabad offers residential project. The project offers villa in various sizes.

- Project ID: J811895922
- Builder: EIPL Group
- Location: EIPL La Paloma Villas, Mokilla, Hyderabad - 501203 (Telangana)
- Completion Date: Jul, 2021
- Status: Started

Description

EIPL La Paloma by EIPL Group is the new residential Villa project launched in Mokila, Shankarpalli Road, Hyderabad. The project host spacious 3 bhk villas in the size ranges in between 3890 to 3910 sqft. The amenities offered in the projects are Indoor Games, CCTV Cameras, Community Hall, Swimming Pool, Gymnasium, etc. The project location has excellent connectivity & it is located at the crux of Mokila, Shankarpalli Road near existing and upcoming communities & facilities.

Amenities:

- 24 X 7 Security
- Badminton Court
- Basketball Court
- Children's play area
- Community Hall
- Earthquake Resistant Structure
- Gymnasium
- Indoor Games
- Jogging Track
- Lift Available
- Rain Water Harvesting
- Swimming pool

EIPL group is a conglomeration of eminent individuals with academic and professional expertise in financial engineering, project management, production planning, marketing communications and business strategy. Professionally managed company dedicated to meaningful transformation of locales.

Features

Luxury Features

- Power Back-up
- Lifts
- High Speed Internet

Lot Features

- Balcony

Recreation

- Swimming Pool
- Park
- Fitness Centre / GYM

Security Features

- Security Guards
- Intercom Facility

Exterior Features

- Reserved Parking

Maintenance

- Maintenance Staff
- Rain Water Harvesting

Gallery

Pictures



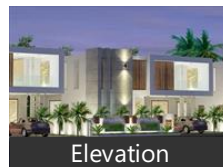
Elevation



Side View



Front View



Elevation

Floor Plans



Master Plan



Floor Plan A



Floor Plan B



Location Map

Location

Landmarks

Hotel

Pragati Hotel Hyderabad (<8km), Lahari Resorts-Bhanoor (<8km), Manikya Meadows Resort (<9km)

Public Transport

Shankarpalli Railway Station (<11km), Nagalpally Railway Station (<6km), Overhead Water Tank (<8km), BDL Sewage Treatment Plant (<8km)

Building

Aliens Space Station 1 (<13km), Sark One Extension (<2km), Subishis Bliss Luxury Homes (<2km), Elite Towers (<6km), Pragati Green Meadows (<8km), Sandstone Paradise (<8km), Golden County (<8km), Pragati Green Heights (<9km), Bemmac Housing (<11km)

ATM/Bank/Exchange

Andhra Pradesh Grameena Vikas Ban... HDFC Bank (<3km), Corporation Bank (<6km), State Bank of India-Kollur (<7km), Andhra Pradesh Grameena Vikas Ban... Andhra Bank-Bhanur (<8km), Andhra Pradesh Grameena Vikas Ban... Canara Bank (<9km), Union Bank of India (<9km), Andhra Bank-Sankarapalli (<11km), Indian Bank (<11km), Axis Bank ATM (<11km)

Recreation

Swimming Pool (<2km), COMMUNITY SWIMMIKNG POOL (<... BDL Temple Park (<7km), Playground Dav BDL Primary Block (... Children, Gaddi Park (<8km), Hospital Park BDL Township (<8km), BDL Swimming Pool (<8km), Swimming Pool BDL Township (<8km Sai Baba Cinema (<11km)

Restaurant & Shops

Food Court Subishi ■■■■■!... Sunny Delights Food Court and Gam... Shri Sai Kirana Store (<2km), Laxmiganesh Kirana and General Sto... DI Mart Super Market (<2km), Prasad Jewellers (<2km), Heritage Sale Point (Sri Venkata Shiva... Best Bakery (<8km), Ice Cream Shop (<8km), Kranthi General Store (<8km), Rajan Automobile (<8km), Naaz Collection (<8km), Saturday Market (<8km), Heritage Sale Point (Kethaki Sangme... Nalanda Book Stores (<8km), Malli Engineering and Electronics (<8.. Puncture Shop Dhaba (<9km), Jaibhvani Vegetable & Fruits (<9km), Dr Rakesh Enterprises (<9km), Prakash General Store (<9km), C R Cool Drinks (<9km), Najitha Steel and Materials (<9km), Printing Digitals (<9km), Karthik Kirana and General Stores (<9.. Praboshan Kirana and General Stores... Organics Diary (<10km), Aparna Optical (<11km), Avokya Milk (<11km), Fathima Lock Centre (<11km), Alighar Lock House (<11km), Kwalaty Footwear (<11km), Lakshmi Grocery Shop (<11km)

Business & Services

Windsor Luxury Homes by Subishi (<.. Loft Line (<6km), Visaka Industry (<8km), Bharat Dynamics Limited (<8km), Visaka Industries (<8km), Pavan Industry (<9km)

Petrol Station

Viqneshan Filling Station (<2km), Gas Godown (<8km), Shri Ambal HP Filling Station (<9km), Indian Oil (<9km)

Hospitals & Clinics

Alekhya Clinic (<2km), Shri Balaji First Aid Centre (<9km), Prakash Hospital-ER (<11km), Prakash Hospital (<11km), Gautham Polyclinic (<11km), SRC Hospital-ER (<11km), SRC Hospital (<11km), Anjana Eye Hospital (<11km), Babu Opticals (<11km)

Going Out

Poolz Lounge (<2km)

Shopping Centre

Shri Venkata Shiva Sai Provision Store.. New Shopping Complex (<8km), Old Shopping Complex (<8km)

* All distances are approximate

Properties

EIPL La Paloma Villas News

Expert Reviews on EIPL La Paloma Villas

Explore

[Projects in Hyderabad](#)

[Brokers in Hyderabad](#)

More Information

Report a problem with this listing

Is any information on this page outdated or incorrect?

[Report it!](#)

Disclaimer: All information is provided by advertisers, including builders/agents/owners, or collected from publicly available sources and may not be verified under RERA. Any information provided on this website, including facts and figures, should be verified independently, including via the relevant RERA website, before entering into any transaction. PropertyWala.com is only an advertising platform to help connect buyers and sellers and is not a party to any transaction, nor shall be responsible or liable to resolve any disputes between them.

[Home](#) » [Hyderabad Real Estate](#) » [Projects in Hyderabad](#) » [EIPL La Paloma Villas - Mokilla, Hyderabad](#)