

## 4 Bedroom Apartment / Flat for sale in Majestique Landmark Towers, Kh... 1.5 - 2 crores



### Majestique Evolvus

Kharadi Bypass, Kharadi, Pune - 401101 (Maharashtra)

- Project/Society: [Majestique Landmark Towers](#)
- Area: 1400 SqFeet ▾
- Bedrooms: Four
- Floor: Thirteenth
- Total Floors: Fifteen
- Facing: East
- Furnished: Unfurnished
- Transaction: New Property
- Price: 1.5 - 2 crores
- Age Of Construction: Under Construction
- Possession: Within 3 Years

### Advertiser Details

**Dhanshree jhade jhade**  
Property Agent / Broker / Consultant

Kharadi, Pune  
mob: 7223816429  
tel: 41014-16429  
mail:  
[www.propertywala.com/U234417210](http://www.propertywala.com/U234417210)

Scan QR code to get the contact info on your mobile

### Description

Majestique evolvus central Kharadi  
Kharadi bypass Magarpatta road

Don't forget to mention that you saw this ad on PropertyWala.com, when you call.

### Features

#### General

- Power Back-up
- Centrally Air Conditioned
- Room AC
- Lifts
- High Speed Internet
- Wi-Fi

#### Lot

- Private Terrace
- Balcony
- Private Garden
- Basement
- Corner Location
- Park Facing

#### Exterior

- Reserved Parking
- Visitor Parking
- Independent Garage
- Servant Quarter

#### Maintenance

- Maintenance Staff
- Water Supply / Storage
- RO System
- Water Softner
- Boring / Tube-well
- Rain Water Harvesting
- Waste Disposal

#### Security

- Security Guards
- Electronic Security
- Intercom Facility
- Fire Alarm

#### Interior

- Woodwork
- Modular Kitchen
- Marble Flooring
- Granite Flooring
- Wooden Flooring
- Fly Proofing
- Feng Shui / Vaastu Compliant

#### Recreation

- Swimming Pool
- Park
- Fitness Centre / GYM
- Club / Community Center

### Location

\* Location may be approximate

### Landmarks

#### Nearby Localities

[EON Free Zone](#), [Wadgaon Sheri](#), [Upper Kharadi](#), [Keshav Naqar](#), [Naqar Road](#), [Mundhwa](#), [Viman Naqar](#)

\* All distances are approximate

### Locality Reviews

One of the promising place to live in. With all the services, malls within 6km radius.

#### Pros:

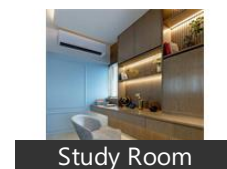
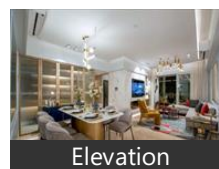
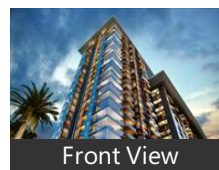
- Easy connectivity

#### Cons:

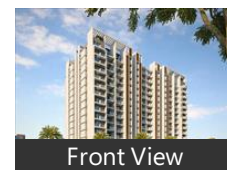
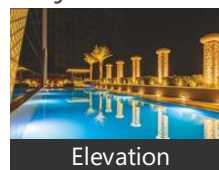
- Prices high

Kharadi, Pune

### Pictures

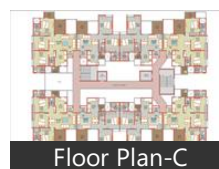


### Project Pictures



\* These pictures are of the project and might not represent the property

### Project Floor Plans



\* These floor plans are of the project and might not represent the property

Posted: Sep 2, 2020 by Tippy J

Everything is nearby.  
Sophisticated atmosphere.  
Hygienic.  
All shopping malls,schools, hospitals, gymnasium,etc everything is nearby.

**Pros:**

- 1) *Everything is Nearby.*
- 2) *Sophisticated atmosphere*
- 3) *Hygienic*

**Cons:**

- *NO CONS*

Posted: Aug 9, 2020 by Shubham Kaswa

Kharadi is the latest, rapidly developing IT Hub of Pune. It is centrally located in the heart of the city. With EON IT Park, many world renowned businesses are setting up their offices in this location. Property rates in this location are shooting up fast. It is a sought-after locality for IT brands and residential projects are selling at a rapid pace. Kharadi is the hot location for investments and growing businesses.

**Pros:**

- *Good connectivity, widest roads*
- *Malls,hospitals, multiplexes, schools in vicinity*

Posted: May 15, 2019 by Sneha Bijlani

One of the fastest growing locality of Pune. Great connectivity to airport, railway station and access to Solapur and Ahmednagar highways. Close to shopping malls and movie theaters

**Pros:**

- *Good transport connectivity*
- *Proximity to offices*
- *Close to the airport*

**Cons:**

- *Prices increasing rapidly*

Posted: Feb 11, 2019 by Prabal Deb

Kharadih is one of the fastest growing residential and commercial hubs in Pune. With IT hubs and Commercial Malls, every thing from work to fun is within minutes of reach. Several gated communities and vicinity to airport and areas like Koregaon Park, Kalyani nagar and Viman Nagar are an added advantage.

**Pros:**

- *Nearer to work places like MIDC, WTC*
- *Several Malls like Seasons Mall, Amonara Mall, Several Hospitals with emergency care units*
- *Cultural Diversity*

**Cons:**

- *The traffic at peak hours is sometimes bad*

Posted: Jun 7, 2017 by Abhijit Majumdar

World Trade Center in Kharadi - hub of business in Pune. DP road connecting EON to Wagholi and Surrounding areas.

**Pros:**

- *IT Hub*
- *International Company Presence*
- *Well developed Infrastructure*

Posted: Jul 17, 2014 by [Jennifer A \(Gulmohar Development\)](#)

Good connectivity to EON IT park, distance is just 3.5 kms, and from Nagar road just a 200 m. Also well connected to Kharadi bypass and Magarpatta city.

**Pros:**

- *Good connectivity to Eon IT park, Kharadi bypass and also Magarpatta city*

Posted: May 4, 2013 by [Sagar sudame \(Pristine Group\)](#)

Kharadi, Pune is rated 8 out of 10 based on 7 user reviews.

Disclaimer: The reviews are opinions of PropertyWala.com members, and not of PropertyWala.com.

**Explore**[Similar Properties](#)[Properties in Kharadi, Pune](#)[Projects in Pune](#)[Brokers in Pune](#)**More Information****Report a problem with this listing**

Is this property no longer available or has incorrect information?

[Report it!](#)

**Disclaimer:** All information is provided by advertisers and should be verified independently before entering into any transaction. You may visit the relevant RERA website of your state to verify the details of this property. PropertyWala.com is only an advertising platform to help connect buyers and sellers and is not a party to any transactions, nor shall be responsible or liable to resolve any disputes between them.