

Manar Manha - VGP Layout, Bangalore



Beautiful apartments with pleasant environment

Manar Manha by Manar Developers Pvt Ltd at the very prime location of Kudlu, VGP Layout in Bangalore offers residential project that host 2 and 3 bhk apartment in various sizes.

- Project ID: J566711895
- Builder: Manar Developers Pvt Ltd
- Location: Manar Manha, Kudlu, VGP Layout, Bangalore - 560068 (Karnataka)
- Completion Date: May, 2013
- Status: Completed

Description

Manar Manha by Manar Developers Pvt Ltd is conveniently situated at Kudlu, VGP Layout, Bangalore. The project is spread over 1025 - 1700 sq.ft. comprising of 2 and 3 bhk apartments in various sizes. The project is well equipped with multipurpose room, children's play area CCTV Cameras Club House Covered Car Parking Gated Community Gym and nearby connectivity such as schools-colleges, hospitals, metro connectivity public transport etc.

Amenities:

- Intercom
- Wifi Connection
- Badminton Court
- Basket Ball Court
- Club House
- Gated Community
- Gym
- Health Facilities
- Indoor Games
- Landscaped Garden
- Play Area
- Rain Water Harvesting
- Security Personnel
- Swimming Pool

Manar Developers is a Private Limited Company known for building and developing quality buildings and flats. The promoters of the Company are in the construction business for the past 20 years. Manar Developers (P) Limited, a name trusted for quality, we have the experience and expertise to turn your desires and dreams in to reality. The company has completed many successful projects which itself is a testimony for the quality of the buildings that they build. Manar Developers always focus on customer's satisfaction and will never compromise with quality.

Features

Luxury Features

- Power Back-up ■ Lifts

Exterior Features

- Reserved Parking

Maintenance

- Rain Water Harvesting

Security Features

- Security Guards ■ Intercom Facility

Recreation

- Swimming Pool ■ Park ■ Fitness Centre / GYM
- Club / Community Center

Land Features

- Club / Community Center ■ Park/Green Belt Facing
- Water Connection ■ Electric Connection
- Close to Hospital ■ Close to School
- Close to Shopping Center/Mall

Gallery

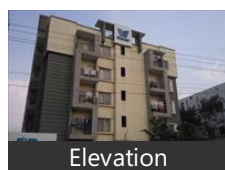
Pictures



Main Entrance



Main Entrance



Elevation



Swimming Pool



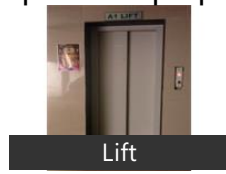
Table tennis



Kid's Play Area



Gymnasium



Lift

Floor Plans



Master Plan



Floor Plan A



Floor Plan B



Location Map

Location

Landmarks

Hotel

Hotel Ibis-Bangaluru (<3km), Hotel Ekaa-Muneshwara Nagar (<2k... The Oterra (<7km), Lobby Cafe-Radha Regent (<9km), Manipal County (<3km), Lemon Tree Hotel Electronics City (<... Keys Select Hosur Road - by Lemon T. Oyo 499 Hotel Umerkot Residency (<.. Radisson (<12km), The Paul Bangalore (<10km), Octave Hotel (<11km), Grand Mercure Bangalore (<7km), COURTYARD BENGALURU OUTER RI... Eagle Ridge (<9km), The President Hotel (<12km), The Forum Mall (<9km), Pride Hotel Bangalore (<14km), Taj MG Road Bengaluru (<13km), La Marvella (<13km), Hyatt Centric-MG Road Bangalore (<.. Aqua (<14km), The Bouvice Hotel (<7km), S Hotel (<8km), Mango Hotels (<8km), ibis Bengaluru (<8km)

Public Transport

Koodlu Gate (<2km), Central Silk Board (<6km), Hosa Road (<4km), Madiwala (<6km), Carmelaram Railway Station (<9km), Tavrekere Bus Stop (<8km)

Recreation

VIBGYOR High School (<1km), Lakshmi Theatre (<8km), Maheshwari Theatre (<9km), Srinivasa Theatre (<9km)

Business & Services

Myntra (<1km), Bda Complex (<4km), Ecospace Business Park (<7km), Wipro Corporate Office (<6km), Kalyani Magnum (<8km), Arbor Brewing Company (<14km), Kormangala Club (<8km), Salarpuria Sattva Softzone (<6km), Toshiba (<6km), Aspiring Minds (<8km), Global Technology Park (<8km), HCL Technologies (<8km)

Restaurant & Shops

Brewsky (<9km), Sangeetha (<4km), Vapour Bangalore (<12km), Tiger Trail (<10km), My Baby Store (<4km), Byg Brewski Brewing Company (<6k... Big Pitcher (<11km), Inchara Hotel (<10km), Prost (<7km), Xtreme Sports Bar (<12km), SONY Center II (<8km), The Black Pearl (<8km), Magic Oven (<3km), Barleyz (<8km), Itsy Bitsy (<4km)

Building

Galaxy Paradise (<4km), Concorde Midway City (<4km), Salarpuria Serenity (<4km), Klassik Nest (<2km), Siddhartha Sapphire (<1km), Shobha Cinnamon and Saffron (<1km Nethravathy Apartments (<6km), Manar Silver Shadows Apartments (<.. SNN Raj Serenity-Main Entrance (<8k.. Aratt Feli Cita-Main Entrance (<6km), Kristal Tiara (<6km), SJR Apartments (<7km), Golden Lake View (<5km), Silver Shelters (<1km), Salarpuria Sattva Greenage (<4km), Suncity Apartment (<5km), Divyasree Elan Homes (<5km), Elan Homes (<5km), GR Lavender Apartment (<10km)

Shopping Centre

Bangalore Central Mall (<6km), Gopalan Innovation Mall (<8km), Royal Meenakshi Mall (<9km), Bangalore Central (<10km), SHOPPERS STOP (<8km), Oasis Centre (<8km), Shri Garuda Swagath Mall (<11km)

Educational Facility

Oxford College of Engineering (<3km. Gnan Srishti School of Excellence (<3..

Hostel

Shri Sai PG for Gents (<1km)

Hospitals & Clinics

Sakra World Hospital (<8km), Medplus (<4km), Sri Jayadeva Institute of Cardiovascu...
Narayana Hrudayalaya Super Special... Vasan Eye Care Hospital (<4km), Manipal Hospital (<10km)

Accommodation

Eco-Haya Apartments (<6km)

ATM/Bank/Exchange

Axis Bank-HSR Layout (<3km)

* All distances are approximate

Properties

Manar Manha News

Expert Reviews on Manar Manha

Explore

[Projects in Bangalore](#)

[Brokers in Bangalore](#)

More Information

Report a problem with this listing

Is any information on this page outdated or incorrect?

[Report it!](#)

Disclaimer: All information is provided by advertisers, including builders/agents/owners, or collected from publicly available sources and may not be verified under RERA. Any information provided on this website, including facts and figures, should be verified independently, including via the relevant RERA website, before entering into any transaction. PropertyWala.com is only an advertising platform to help connect buyers and sellers and is not a party to any transaction, nor shall be responsible or liable to resolve any disputes between them.

[Home](#) » [Bangalore Real Estate](#) » [Projects in Bangalore](#) » [Manar Manha - VGP Layout, Bangalore](#)