

Rudra Shubhkamna - Amiliha, Kanpur



Reflects beauty in its true sense

Rudra Shubhkamna by Rudra Real Estate Ltd. at the very prime location of Amiliha in Kanpur offers residential project that host 1, 2 and bhk apartments and villas in various sizes.

- Project ID: J119010541
- Builder: Rudra Real Estate Ltd.
- Location: Rudra Shubhkamna, Amiliha, Kanpur - 209203 (Uttar Pradesh)
- Completion Date: Dec, 2020
- Status: Started

Description

Rudra Shubhkamna by Rudra Real Estate Ltd. at the very prime location of Amiliha in Kanpur offers residential project that host 1, 2 and bhk apartments and villas in the size ranges n between 375 to 1425 sqft. This Project provides amenities like Club House - Gym, Common Hall, Indoor Games, Activity Park cum Party Lawn, Kids Play Area, Kids Swimming Pool. The project is strategically located and have all the basic utilities are nearby.

Amenities:

- 24Hrs Backup Electricity
- Intercom
- CCTV Cameras
- Security Personnel
- Lift
- Covered Car Parking
- Convenience Store
- Temple
- Party Area
- 24Hrs Water Supply
- Lawn
- Club House
- Indoor Games
- Play Area
- Swimming Pool
- Gym

Rudra Real Estate Ltd . is an ISO 9001:2015 certified company and a registered member of CREDAI & IGBC.A highly dynamic, diversified and multifaceted company, Rudra Real Estate Ltd. owes its meteoric rise to highest echelons of the real estate industry to the ceaseless efforts we've been making since our inception to understand the unspoken needs of customers and go above and beyond their expectations.

Features

Luxury Features

- Power Back-up ■ Lifts ■ High Speed Internet

Lot Features

- Balcony

Recreation

- Swimming Pool ■ Park ■ Fitness Centre / GYM
- Club / Community Center

Other features

- Yoga & Meditation Pavilion ■ Kids Play Area
- Indoor Games

Security Features

- Security Guards ■ Intercom Facility

Exterior Features

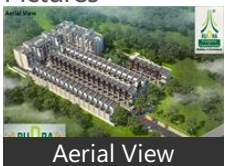
- Reserved Parking ■ Visitor Parking

Maintenance

- Maintenance Staff ■ Rain Water Harvesting

Gallery

Pictures



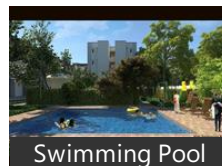
Aerial View



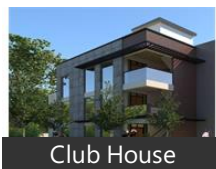
Elevation



Main Entrance



Swimming Pool



Club House



Kids Play Area



Activity Park/ Party



Yoga Pavilion

Floor Plans



Floor Plan A



Floor Plan B



Floor Plan C



Floor Plan D



Location Map



Master Plan

Location

Landmarks

Recreation

Jungil Watar World (<12km)

Public Transport

Mandhana Railway Station (<6km), Purvauttar Railway Station Mandhan... Chaubepur Railway Station (<4km)

Business & Services

Lohia Group (<2km), RMPL (<2km), Unichem India (<2km), RSPL (<3km)

Hospitals & Clinics

Rama Medical College Hospital & Re.. Sri Sadguru Hospital Eye and Trama ... Sri Sadguru Hospital Eye and Trama ...
Aalam Dawakhana (<4km), Dental Lab (<4km)

ATM/Bank/Exchange

Bank of India-Maharana Pratap Engin. Baroda Uttar Pradesh Gramin Bank (<. Bank of Baroda-Amiliha (<1km),
HDFC Bank (<2km), Bank of Baroda-Choubepur Kalan (<... Uco Bank-Choubepur (<3km),
Uco Bank-Choubepur (<3km), Zila Sahakari Bank-Choubeypur (<4k...

Building

Rudra Shubhkamna (<0.5km)

Petrol Station

Bharat Petroleum (<0.5km), Reliance (<2km), Indian Oil (<3km)

Restaurant & Shops

Money Fast Food Centre (<1km), Mantora Vegetable (<1km), Bhadoriya Trading Company (<1km),
Jai Maa Ambe Lassi Centre (<1km), Thandi Beer Ki Dukaan (<1km), Deshi Sharab Ki Dukaan (<1km),
Angreji Sharab Ki Dukan (<1km), Om Shanti Bakery & General Store (<. Chote Baua Jalpan Gruh & Fast Food...
Mahboob Trunk Store (<1km), Theka Deshi Sharab (<1km), Ayush Provision Stores (<2km),
Bheera Telecom (<2km), Aarti Cold Drink Corner (<3km), Nida Trunk Store (<3km), Arti General Store (<3km),
Rajrani Chouraha (<3km), Shiv Traders (<4km), Angrezi Sharab Ki Dukaan (<4km), Bharat Glass House (<4km),
Vipin Telecom (<4km), Gupta Kirana Store (<4km), Dayal Mobile Repairing Centre (<4km).
Dayal General Store (<4km), Jaiswal Telecom (<4km), Baba Telecom (<4km), Juli Kirana Store (<4km),
Rahul Telecom (<4km), Julie Provijan Store (<4km), Madhuri Electricals (<4km), Sharma Electronic (<4km),

Achay Medical Store (<4km), Shivam Doodh Dairy (<4km), Madhuri Electronics (<4km), Sapna Electronics (<4km), Anash Jewels (<4km), New Ram Cycle Stores (<4km), Roshni Enterprises (<4km), Madhuri Paints (<4km), Sapna Traders (<4km), Swaraj Ashram Khadi Bandhar (<4km.. Krishi Seva Kendra (<4km), M Vaishno Telecom (<4km), Raju Kirana Store (<4km), Om Sai Confectionery (<4km), Shanu Mobile (<4km), Agriumraj Electronics (<4km), Raj Electronics & Electricals (<4km), Pragya Classes (<4km), A To Z Readymade Garments (<4km), Ashok Hosiery (<4km), Akash Paints (<4km), Shree Hari Om Vastralay (<4km), Chawla Machardaniya (<4km), Ma Durga Vastra Bhandar (<4km), Trivedi Stationery Store (<4km), Choubepur Book Stall (<4km), Mili General Store (<4km), Balaji General Store (<4km), Arsh General Store (<4km), Chourasia Telecom (<4km), MS. Baghavathi Trading (<4km), Maruti Nandan Traders (<4km), MS. Annapurna Cement Agency (<4... Kisan Machinery Store (<4km), Hari Electronic (<4km), Sandipani Jewelers (<4km), Laxmi Kirana Bhandar (<4km)

Hotel

Hotel Celebration (<9km)

Hostel

Raman House (<4km), Kalpana House (<4km)

Camping

Football Ground (<4km)

* All distances are approximate

Properties

Rudra Shubhkamna News

Expert Reviews on Rudra Shubhkamna

Explore

[Projects in Kanpur](#)

[Brokers in Kanpur](#)

More Information

Report a problem with this listing

Is any information on this page outdated or incorrect?

[Report it!](#)

Disclaimer: All information is provided by advertisers, including builders/agents/owners, or collected from publicly available sources and may not be verified under RERA. Any information provided on this website, including facts and figures, should be verified independently, including via the relevant RERA website, before entering into any transaction. PropertyWala.com is only an advertising platform to help connect buyers and sellers and is not a party to any transaction, nor shall be responsible or liable to resolve any disputes between them.

[Home](#) » [Kanpur Real Estate](#) » [Projects in Kanpur](#) » [Rudra Shubhkamna - Amiliha, Kanpur](#)