

2 Bedroom Apartment / Flat for rent in Devanahalli, Bangalore

35,000



Sattva Park Cubix Is Located In The Fastest Growing Location Of Devanahalli - North Bangalore.

Salarpuria Sattva Park Cubix Devanahalli, Devanahalli, Ba..

- Area: 2000 SqFeet ▾
- Bedrooms: Two
- Bathrooms: Two
- Floor: Seventh
- Total Floors: Fourteen
- Facing: North
- Furnished: Furnished
- Monthly Rent: 35,000
- Rate: 18 per SqFeet +5%
- Age Of Construction: 5 Years
- Available: Immediate/Ready to move

Description

Nestled in the heart of Devanahalli is Sattva Park Cubix, an 18-acre residential address near the Bangalore Airport. The property offers you a luxurious yet serene lifestyle, with Vastu compliant 1, 2, and 3 BHK flats. These apartments are open on two sides, which bring in ample natural light & offer stunning views of the locale. 50+ amenities such as 2 clubhouses, indoor game zone, sports courts, spa & salon, & cafe offer a mix of relaxation, wellness, and entertainment.

Please mention that you saw this ad on PropertyWala.com when you call.

Features

General

- Power Back-up
- Lifts

Lot

- Balcony
- Park Facing

Exterior

- Reserved Parking
- Visitor Parking

Maintenance

- Maintenance Staff
- Water Supply / Storage
- Boring / Tube-well
- Rain Water Harvesting
- Waste Disposal

Security

- Security Guards
- Electronic Security
- Intercom Facility
- Fire Alarm

Interior

- Woodwork
- Modular Kitchen
- Granite Flooring

Recreation

- Swimming Pool
- Park
- Fitness Centre / GYM
- Club / Community Center

Location

* Location may be approximate

Landmarks

Public Transport

BMTC Bus Depot-50 (<0.5km)

ATM/Bank/Exchange

Punjab National Bank (<0.5km), Bangalore Rural & Ramanagara Distr... Uco Bank (<0.5km), Axis Bank (<0.5km), Axis Bank-Devanahalli (<0.5km), Uco Bank-Devanahalli (<0.5km), Karnataka Gramin Bank-Devanahalli ... State Bank of India (<0.5km), Bank of Baroda (<0.5km), Union Bank of India (<0.5km), State Bank of India-Devanahalli (<0.5.. Karnataka Gramin Bank-Devanhally (... Karnataka Gramin Bank (<0.5km),

Advertiser Details

Shivani Suresh
Property Management

HSR Layout Sector 1, Bangalore

mob: 8296448624

tel:

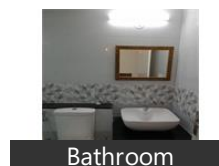
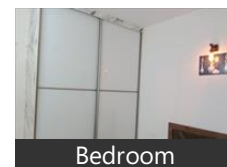
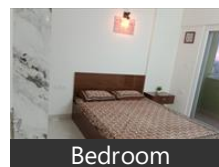
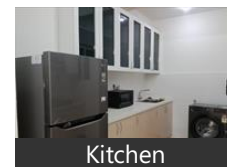
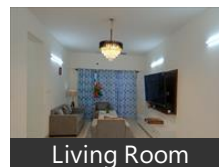
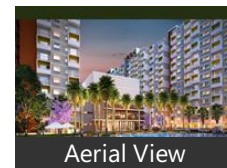
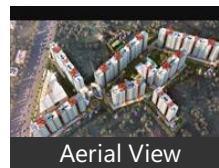
mail:

www.propertywala.com/U426481030



Scan QR code to get the contact info on your mobile

Pictures



Hdfc Bank (<0.5km)

Restaurant & Shops

Megana Fashions (<0.5km), S S Super Market (<0.5km), Janatha Bazar (<0.5km), Adarshini Textiles (<0.5km), Zoya Whole Sale (<0.5km), Annapoorneshwari Footwear (<0.5km. Safal Daily Fresh (<0.5km), Krishan Garments (<0.5km), Kushi Ladies And Kids Wear (<0.5km), Padmvathi Textiles (<0.5km), Krishna Sports And Books Shop (<0.5.. Mahalakshmi Store (<0.5km), J M J Fashions (<0.5km), L G S Stitch Ware (<0.5km), Jaya Sree Enterprises (<0.5km), Kaumar Textiles (<0.5km), Pawan Provision Store (<0.5km), Thirumala Provision Center (<0.5km), Manjunatha Rice Traders (<0.5km), New Raj Textiles (<0.5km), Chandr Shekar Azad Textiles (<0.5km.. Sree Sai Readymade (<0.5km), Eshwari Wine Center (<0.5km), Shri Sai Baba Provisions (<0.5km), Shri Maruti Hot Chips (<0.5km), S S Mens Ware (<0.5km), S L V Footwear (<0.5km), Hopcoms (<0.5km), Vishwa Footwear (<0.5km), Manjunatah Fashion (<0.5km), R P N Enterprises (<0.5km), Parihar Saree Center (<0.5km), Saptha Giri Navalty Footwear (<0.5km. Ravi Textiles (<1km), S R Fashions (<1km), Life Style Garments (<1km), All Round Textiles (<1km), F K Fashions (<1km), Madhu Footwear (<1km), Bhagavan Mens Wear (<1km), Durga Store (<1km), Vishal Textile (<1km), Nithesh Garments (<1km), Selection Boutique (<1km), Anu Ladies Textile (<1km), Darshini Style Zone (<1km), P K Textiles (<1km), Sai Baba Textiles (<1km), [more...](#)

Locality Reviews

Devanahalli, Bangalore

One of the major questions most investors face is, "Which property should I invest in?" There are many properties spread over various areas across the city and finding the right one to invest in is usually a gamble. However, there is a rising trend of investors opting for suburban areas for real estate investment and Bangalore's Devanahalli is one of them. Here are some of the factors that have made Devanahalli a popular investment destination for home buyers and investors.

Pros:

- *Connectivity*
- *Technology and Industrial Hub*
- *Social Infrastructure*

Posted: Jun 16, 2019 by [Priyanka Navihomez \(Navi Homez Bangalore\)](#)

- Bangalore International Airport • IT-BT Park / Hardware Park
 - Aerospace Park
 - Financial City
- Confident Group (70 Acrs) & Many More

Pros:

- *KIADB Industrial Area*
- *Brigade Orchids 130 (Acres)*
- *Very Near to 300 Ft ST Ring Road*

Cons:

- *Too much noise because of the airport*

Posted: Jan 19, 2017 by [Anjali Shetty \(Rosscoff Developers\)](#)

nearby places

- * Nagarjuna Engineering College
- * Stone Hill International School
- * Adarsha Institute Tecnology
- * Visweshwariah IIT University
- * Manipal University in 200 acres
- * 10 mins. Drive from BMSIT Collage Yelahanka
- * 15 mins. Drive from ITIR in 12,000 acres
- * 15 mins. Drive from Bangalore International Airport (BIA)
- * 10 mins. Drive from Aerospace Zone
- * 15 mins. Drive to Silk City.
- * 15 mins. Drive from upcoming 5 star hotel & golf course.
- * 10 mins. Drive from global financial district
- * 15mins. Drive from proposed 8 lane outer ring road
- * 15mins. Drive to Nandi Hills
- * Projects of brigade, Century, Hiranandini, Rmz, Sobha, Nitesh, Embassy, Confident, Ozone group & others.

Pros:

- *Very Gud place to Investment*
- *With 4 installments Payments*

Cons:

- *nothing*

Posted: Jul 8, 2016 by Sandeep M

Devanahalli is now the nerve center of top class Real Estate Development. Several projects in Hospitality, SEZ , Corporate Mega Townships, Luxurious Five Star Hotels, Golf Courses, Sports City, public sector undertakings have been initiated in recent times. All big names in real estate such as Prestige, Shoba, RMZ, Brigade,Hiranandani etc have already been initiated. This makes North Bengaluru the hot hub of activity and the most desired location for home seekers and investors. Powered by the fully operational Bengaluru International Airport(BIAL), North Bengaluru is now a discerning property destination.

Pros:

- *Best Location*

Posted: Nov 26, 2015 by [Andaras Anbu \(Urban Estates\)](#)

Devanahalli is a Normal Village going to become as international city hot of North Bangalore. Good investment area.

Pros:

- *ITIR and Industrial parks*
- *Near to Airport*

Posted: Sep 22, 2015 by [Sabarish rachapalli \(Vedabhoomi Housing\)](#)

Devanahalli is having all round development, rapid growth in the area and affordability will make Aero

MiniCity your first choice to live an enviable lifestyle

Pros:

- *Best Location*

Posted: Jul 4, 2015 by [k raja \(Saroj Group\)](#)

Devanahalli is the best place to live in best price with good amenities and features.

Pros:

- *Best Investment*

Posted: Jun 13, 2015 by Showry M

Devanahalli has seen numerous hospitals, educational institutions and shopping malls coming up in the recent years. After evaluating the prospect of North Bangalore, the State government has decided to develop a number of projects here, which includes the planned aerospace SEZ, Rs 1,000-crore financial city, Hardware Park and the Information Technology Investment Region (ITIR).

Pros:

- *Good Connectivity*

Posted: May 2, 2015 by [INMARK pmc \(Inmark Pmc\)](#)

Devanahalli has turned out to be one of the most preferred locations for real estate investment in Bangalore, owing to its close proximity to Kempegowda International Airport and key city landmarks. The real estate prices in the region have grown at a steady pace with an average appreciation of about 50-60 per cent. As such, today we, Green Brick, are glad to announce an excellent real estate investment opportunity for you in the form of The Greenbrick Enclave. This prestigious project is a collection of premium villa plots in an enclave of 45 acres at Devanahalli on National Highway-07, just 10 minutes away from International Airport.

Pros:

- *Well Planned Area*

Posted: Feb 28, 2015 by [Pavan Kumar \(Jayani Properties\)](#)

Devanahalli has all amenities like, Electricity, Drainage, Water tank, Tar road, Civic amenities, Park, etc. It lies close to Bangalore International airport.

Pros:

- *Amenities Electricity, Drainage, Water tank, Tar, Park*
- *Close to Bangalore Airport*

Posted: May 27, 2013 by [Jayaram L S \(Sri Panchamukhi Developers\)](#)

Devanahalli, Bangalore is rated 9 out of 10 based on 10 user reviews.

Disclaimer: The reviews are opinions of PropertyWala.com members, and not of PropertyWala.com.

Explore

[Similar Properties](#)

[Properties in Devanahalli, Bangalore](#)

[Projects in Bangalore](#)

[Brokers in Bangalore](#)

More Information

Report a problem with this listing

Is this property no longer available or has incorrect information?

[Report it!](#)

Disclaimer: All information is provided by advertisers and should be verified independently before entering into any transaction. You may visit the relevant RERA website of your state to verify the details of this property. PropertyWala.com is only an advertising platform to help connect buyers and sellers and is not a party to any transactions, nor shall be responsible or liable to resolve any disputes between them.