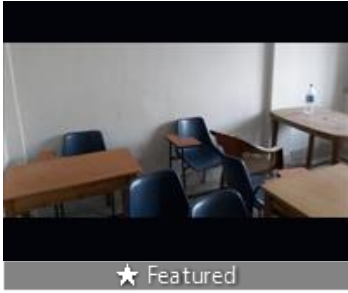


## Office Space for rent in Kasba, Kolkata

25,000



### Office Space For Rent In Rajdanga Narkelbagan


Rasbihari Connector Rajdanga, Kasba, Kolkata - 700107 ...

- Area: 650 SqFeet ▾
- Bathrooms: One
- Floor: Second
- Total Floors: Four
- Furnished: Unfurnished
- Lease Period: 11 Months
- Monthly Rent: 25,000
- Rate: 38 per SqFeet **-10%**
- Available: Immediate/Ready to move

### Advertiser Details

**Houseaa Reality**  
**Bhairab Sannyal**  
Sales Director

R B Connector, Kolkata  
mob: 8282862636  
tel: 8276022888  
mail: houseaa1@gmail.com  
www.propertywala.com



Scan QR code to get the contact info on your mobile

[View all properties by Houseaa Reality](#)

### Description

office space for rent rajdanga near narkelbagan close to GST Bhavan and Ruby Hospital mor nearby Acropolis Mall, this area located by EM bypass and Raspb Rashbehari connector very nice Transportation system for this area

When you call, please mention that you saw this ad on PropertyWala.com.

### Features

#### General

- Wi-Fi

#### Exterior

- Visitor Parking

#### Lot

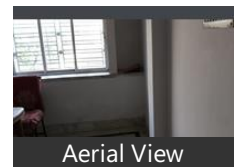
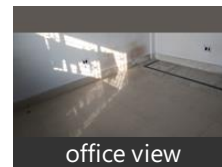
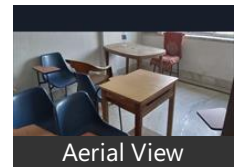
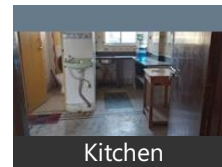
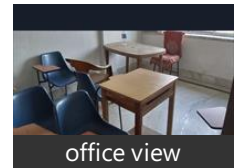
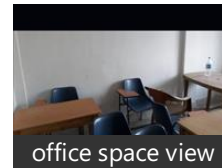
- Balcony

#### Maintenance

- RO System
- Waste Disposal

### Location

### Pictures



\* Location may be approximate

### Landmarks

#### Nearby Localities

[E M Bypass Extension](#), [P.Majumder Road](#), [Ruby Hospital Main Rd](#), [Ruby General Hospital](#), [R B Connector](#), [Kalikapur](#), [Raidanga](#), [VIP Nagar](#), [Haltu](#), [Anandapur](#), [E M Bypass Extension](#), [P.Majumder Road](#), [Ruby Hospital Main Rd](#), [Ruby General Hospital](#), [R B Connector](#), [Kalikapur](#), [Raidanga](#), [Singha Bari](#), [Haltu](#), [Anandapur](#), [E M Bypass Extension](#), [P.Majumder Road](#), [Ruby Hospital Main Rd](#), [Ruby General Hospital](#), [R B Connector](#), [Kalikapur](#), [Raidanga](#), [Haltu](#), [Anandapur](#), [Kabardanga](#), [E M Bypass Extension](#), [P.Majumder Road](#), [Ruby Hospital Main Rd](#), [Ruby General Hospital](#), [R B Connector](#), [Kalikapur](#), [Raidanga](#), [Gitaniali park](#), [Anandapur](#), [Tagore Park](#), [E M Bypass Extension](#), [P.Majumder Road](#), [Ruby Hospital Main Rd](#), [Ruby General Hospital](#), [R B Connector](#), [Kalikapur](#), [Raidanga](#), [Gitaniali park](#), [Anandapur](#), [Tagore Park](#), [E M Bypass Extension](#), [Kasba Golpark](#), [P.Majumder Road](#), [Ruby Hospital Main Rd](#), [Ruby General Hospital](#), [R B Connector](#), [Kalikapur](#), [Raidanga](#), [Anandapur](#), [Tagore Park](#), [E M Bypass Extension](#), [Kasba Golpark](#), [P.Majumder Road](#), [Ruby Hospital Main Rd](#), [Ruby General Hospital](#), [R B Connector](#), [Kalikapur](#), [Raidanga](#), [Haltu](#), [Anandapur](#), [E M Bypass Extension](#), [Kasba Golpark](#), [P.Majumder Road](#), [Ruby Hospital Main Rd](#), [Ruby General Hospital](#), [R B Connector](#), [Kalikapur](#), [Raidanga](#), [Haltu](#), [Anandapur](#), [E M Bypass Extension](#), [Kasba Golpark](#), [P.Majumder Road](#), [Ruby Hospital Main Rd](#), [Ruby General Hospital](#), [R B Connector](#), [Kalikapur](#), [Raidanga](#), [Haltu](#), [Anandapur](#)

\* All distances are approximate

### Locality Reviews

Kasba, Kolkata

Kasba Rajdanga is the most valuable place in Kolkata now. It has all the facilities and amenities. Now a days , it is considered as Modern Kolkata with RB Connector as modern Park Street.

#### Pros:

- Great Communication
- All Ammenities
- Fully Secured Place

**Cons:**

- *Nothing*

Posted: Sep 25, 2020 by Pijush Roy

One of the best places at South Kolkata. Very well connected and best connecting place. All Amenities are nearby.

**Pros:**

- *Kolkata south Prime Location*

**Cons:**

- *Well connected to different places*

Posted: Dec 8, 2019 by Debasis Roy

Well developed area. Nearby renowned schools, hospitals, markets and shopping complexes. Bus and Taxi stand are within a reach.

**Pros:**

- *Well developed area*
- *Good connectivity*

**Cons:**

- *Traffic congestion*

Posted: Apr 9, 2019 by [VESTA PROPERTY CONSULTANT \(Vesta Property Consultants\)](#)

Very Good Residential area in South Kolkata with best communication. Nearby landmark places are Gariahat, Ruby, Acropolis, Sc. City etc.

**Pros:**

- *Calm & Quite with all facilities*

**Cons:**

- *Nil*

Posted: Dec 25, 2018 by Asis S

Best Place to stay at South Kolkata. Gariahat, Ruby, Acropolis are nearby landmarks. Very Good Communication with Train auto, Bus, Train etc.

**Pros:**

- *All facility with good communication*

**Cons:**

- *Nothing*

Posted: Dec 25, 2018 by Debas S

Kasba, Kolkata is rated 6 out of 10 based on 5 user reviews.

Disclaimer: The reviews are opinions of PropertyWala.com members, and not of PropertyWala.com.

Explore

[Similar Properties](#)

[Properties in Kasba, Kolkata](#)

[Projects in Kolkata](#)

[Brokers in Kolkata](#)

More Information

Report a problem with this listing

Is this property no longer available or has incorrect information?

[Report it!](#)

**Disclaimer:** All information is provided by advertisers and should be verified independently before entering into any transaction. You may visit the relevant RERA website of your state to verify the details of this property. PropertyWala.com is only an advertising platform to help connect buyers and sellers and is not a party to any transactions, nor shall be responsible or liable to resolve any disputes between them.