

Office Space for rent in Electronic City Phase 2, Bangalore

17 lakhs



Office Space For Rent In Bangalore

Hosur Main Road, Electronic City Phase 2, Bangalore - 56..

- Area: 26000 SqFeet ▼
- Bathrooms: Six
- Floor: Second
- Total Floors: Seven
- Facing: North East
- Furnished: Unfurnished
- Lease Period: 60 Months
- Monthly Rent: 1,700,000
- Rate: 65 per SqFeet **+20%**
- Age Of Construction: 1 Years
- Available: Immediate/Ready to move

Advertiser Details

Realty World India
 Mohammed .
 Consultant
 Domlur, Bangalore
 mob: 9916255610
 tel:
 mail: realtyworldindia@gmail.com
 www.realtyworldindia.com

Scan QR code to get the contact info on your mobile
[View all properties by Realty World India](#)

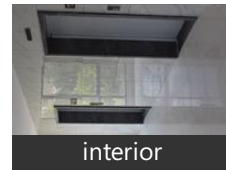
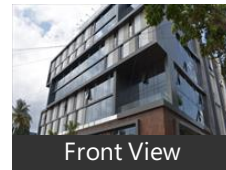
Description

Office Space For Rent In Bangalore

Don't forget to mention that you saw this ad on PropertyWala.com, when you call.

Location

Pictures



* Location may be approximate

Landmarks

Nearby Localities

[Electronic City](#), [Electronic City Phase 1](#), [Rayasandra](#), [Ananthanagar](#), [Gulimangala](#), [Hebbagodi](#), [Bommasandra Industrial Area](#), [Chikkanagamanqala](#)

* All distances are approximate

Locality Reviews

Electronic City Phase 2, Bangalore

Multiple it companies are located in this location
lots of development of happening
its upcoming area

Pros:

- LOTS OF DEVELOPMENT OF HAPPENING
- ITS UPCOMING AREA

Cons:

- ROAD CONSTRUCTION IS NOT GOOD YET

Posted: Mar 21, 2017 by Riya fakhi

Surrounded by it industry
lots of development coming in the surrounding
peripheral ring road is getting constructed

Pros:

- SURROUNDED BY IT INDUSTRY
- LOTS OF DEVELOPMENT COMING IN THE SURROUNDING
- PERIPHERAL RING ROAD IS GETTING CONSTRUCTED

Cons:

- YET CONSTRUCTION ON INTERNAL ROADS SHOULD BE MAINTAINED

Posted: Feb 22, 2017 by [Gazna arai \(Bren Corporation\)](#)

one of the prime location in bangalore.
It is also known as a IT Hub.

All the big MNC companies are located here.

Pros:

- *IT Companies Are located here*
- *Peaceful Area*
- *near to hosur main road*

Cons:

- *Little bit far from Main city*

Posted: Feb 16, 2017 by Praksash Singh

This location is well connected to many IT companies like ex-Tech Mahindra, HCL etc. It is a peaceful area to live in with all basic facilities

Pros:

- *so many IT company are there*
- *good location and peaceful area*
- *good connectivity*

Cons:

- *Little bit far from city*

Posted: Jan 14, 2017 by Sasmita parida

In electronic city phase-2, So many IT company are there for eg -HCL,Tech Mahindra etc.

Pros:

- *So many IT company are there*
- *Peaceful area*
- *Near to Hosur Road*

Cons:

- *Little bit far from main city*

Posted: Jan 1, 2017 by Mayank Singh

Connectivity is very good, so many IT companies are there, Peaceful area

Pros:

- *Good location*
- *So many IT Companies are there*
- *Peacefull location*

Cons:

- *Little bit far from city*

Posted: Dec 25, 2016 by [Shubham Raj \(Bren Corporation\)](#)

So many IT company are there, Tech Mahindra, HCL and etc. o DJ Interior (<10km),

- o Daily Bread (<11km),
- o Adidas (<7km),
- o Decathlon Sarjapur (<7km),
- o Bangalore Tile Company (<9km),
- o Kanti Sweets (<8km),
- o Play Arena (<8km),
- o Pizza Hut (<10km),
- o L. M. R. Furnishing India Private Limited (<9km),
- o D-Mart (<7km),
- o Happy Endings (<10km),
- o Kids City (<10km),
- o Sweet Chariot: St.Marys Enterprises (<8km),
- o Fabindia (<14km),
- o Aruna Musicals New (<12km),
- o Birla Limited (<4km),
- o Cafe Coffee Day (<11km),
- o Balaji Interiors (<7km),
- o Cafe Coffee Day (<10km)
- Restaurants & Clubs
- o Hotel ibis Bengaluru Techpark (<11km),
- o Hotel ibis Bengaluru Hosur Road (<10km),
- o Barbeque Nation (<12km),
- o Subway (<10km),
- o Daily Bread (<11km),
- o The Fisherman,
- o Domino,
- o The Punjabi Rasoi (<10km),
- o Kanti Sweets (<8km),
- o Play Arena (<8km),
- o Pizza Hut (<10km),
- o Gud Dhani (<13km),
- o D-Mart (<7km),
- o Happy Endings (<10km),
- o Alloro (<4km),
- o Sweet Chariot: St.Marys Enterprises (<8km),
- o Cafe Coffee Day (<11km),
- o Nandhana Palace (<14km),
- o Domino,
- o Cafe Coffee Day (<10km)

Pros:

- *Very good location*
- *Good Connectivity*
- *Peace full area*

Cons:

- *Malls are not there*

Posted: Dec 21, 2016 by Mayank Singh

Electronic city Phase 2 is a prime locality in Bangalore, once after Metro station open up than this locality will have a biggest advantage for people.

Pros:

- *lots of IT companies*
- *Good living atmosphere*

Cons:

- *lack of Shopping Mall*

Posted: Mar 17, 2015 by [Nadeem Pasha \(Sri Vishnu Ventures\)](#)

Pre launch offer 2/3 BHK flats sale at Electronic city phase 2 near Biocon ,Bangalore

Pros:

- *Well Planned Area*
- *Availability of good shopping centers, stores, cinema halls, schools*

Posted: Nov 10, 2014 by [Shobha shree \(Amr Housing Development Corporation\)](#)

Electronic City Phase 2, Bangalore is rated 7 out of 10 based on 9 user reviews.

Disclaimer: The reviews are opinions of PropertyWala.com members, and not of PropertyWala.com.

Explore

[Similar Properties](#)

[Properties in Electronic City Phase 2, Bangalore](#)

[Projects in Bangalore](#)

[Brokers in Bangalore](#)

More Information

Report a problem with this listing

Is this property no longer available or has incorrect information?

[Report it!](#)

Disclaimer: All information is provided by advertisers and should be verified independently before entering into any transaction. You may visit the relevant RERA website of your state to verify the details of this property. PropertyWala.com is only an advertising platform to help connect buyers and sellers and is not a party to any transactions, nor shall be responsible or liable to resolve any disputes between them.