

PSI Oliver - Gunjur, Bangalore



Built to match your inimitable style

PSI Oliver by Pleasure Spaces Private Limited at Gunjur in Bangalore offers residential project that host 3 bhk villa plot in various sizes.

- Project ID: J463231189
- Builder: Pleasure Spaces Private Limited
- Location: PSI Oliver, Gunjur, Bangalore (Karnataka)
- Completion Date: Sep, 2020
- Status: Started

Description

PSI Oliver by Pleasure Spaces Private Limited at the very prime location of Gunjur offers spacious 3 bhk villa plots in the size ranges in between 1200 to 4000 sqft with array of amenities provided like swimming pool, Grocery shop, Gym etc. The location of Oliver is equidistant to Bengaluru's foremost tech parks which are ITPB and Electronic City, while also being in very close proximity to the future corporate stem of Bengaluru - Sarjapur Road.

Amenities :

- Auditorium
- Badminton Court
- Basket Ball Court
- Garden
- Indoor Games
- Car Parking
- Club House
- Gym
- Jogging Track
- Swimming pool

Pleasure Spaces (india) Private Limited is majorly in Real Estate and Renting business from last 4 years and currently, company operations are active. This class includes buying, selling, renting and operating of self-owned or leased real estate such as apartment building and dwellings, non-residential buildings, developing and subdividing real estate into lots etc.

Features

Luxury Features

- High Speed Internet

Exterior Features

- Reserved Parking

Maintenance

- Maintenance Staff
- Water Supply / Storage
- Rain Water Harvesting

Security Features

- Security Guards

Recreation

- Swimming Pool
- Park
- Fitness Centre / GYM

Land Features

- Clear Title
- Plot Boundary Wall
- Society Boundary Wall
- Corner Plot
- Feng Shui / Vaastu Compliant
- Club / Community Center
- Park/Green Belt Facing
- Water Connection
- Electric Connection
- Close to Hospital
- Close to School

Gallery

Pictures



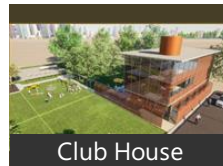
Main Entrance



Side View



Front View



Club House

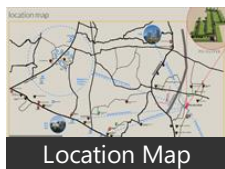


Gymnasium

Floor Plans



Master Plan



Location Map

Location

Landmarks

Hotel

Europa 360 (<7km), Miraya Hotel Whitefield Bengaluru (<. Octave Hotel & Spa (<7km), Lemon Tree Hotel Whitefield (<8km), FOUR POINTS BY SHERATON-Benga... Keys Select Hotel Whitefield Bengal... Oyo Flagship 475 Marathahalli (<7km. Aloft Bengaluru Whitefield (<11km), Holiday Inn Express Bengaluru White... Radha Homestay (<9km), Mapple Express Bangalore (<9km), Aloft Bengaluru Cessna Business Par... The Orange Hotel-Marathalli (<7km), Citrus Bangalore (<10km), ibis Bengaluru Outer Ring Road Hote... Bengaluru Marriott Hotel Whitefield ... Fortune Select Trinity-Itp Road (<9k... Ginger-Itp Road (<9km), OYO 5108 The Retreat Hotel (<7km), courtyard marriott (<8km)

Building

Asset Aura (<2km), Purva Riviera (<7km), Vaswani Reserve (<6km), Parimala Trinity (<5km), Vaswani Brentwood (<5km), Sun City Gloria (<5km), Prestige Shantiniketan (<11km), Sri Krishna Ventures (<6km), VDB Azure (<2km), Prestige Ozone (<7km), Alpineeco Doddanekundi (<10km), Manar Silver Shadows (<9km), Mantri Commercio (<8km), Tzed Homes (<6km), Asset Gardenia & Asset Enclave (<6k... Kirstal Tiara (<9km), Rohan Vasantha (<7km), Purva Fountain Square ■■■■■■ .. Sohum Isiri (<7km), Samrudhi (<7km), Midtown Opulent (<5km), Sowparnika Sanvi (<9km), Arcade Dreams (<9km), Elan (<9km), Sobha Marvella ■■■■■ ■■■■■■ Salarpuria Sanctity (<8km)

Public Transport

Carmelaram Railway Station (<5km), Kundalahalli Gate (<6km), Marathahalli Ring Road Bridge (<7km. Marthahalli Bridge & Ring (<7km), Belandur Road Railway Station (<5km. OLD BANGALORE INTERNATIONAL ... Hal Airport-EB (<12km), Whitefield Railway Station (<12km), Bmtc Bus Station-Itp (<9km), Graphite India-SB (<10km)

Shopping Centre

Forum Value Mall (<6km), Inorbit-Gate 1 (<9km), Bangalore Central (<9km), INORBIT MALL (<9km), Hypercity (<9km), SOUL SPACE ARENA (<11km), Brookefield Mall (<7km), Ascendas Park Square Mall (<10km)

Business & Services

Decathlon Sports India (<5km), Ecospace Business Park (<8km), Wipro Corporate Office (<8km), Prestige Tech Park (<7km), Cosmos Mall (<7km), Ktpo (<9km), Emc2 (<11km), SJR Park (<9km), Utc Aerospace Systems (<8km)

Restaurant & Shops

Brand Factory (<8km), Kalamandir (<8km), Wildcraft (<7km), MadhuLoka Liquor Boutique (<7km), More Mega Store (<13km), Abhishek Fine Ready Made Showroo...

Hospitals & Clinics

Sakra World Hospital (<8km), Vydehi Hospital (<9km), Sankara Eye Hospital (<6km), Yashomati Hospitals (<6km), Sri Satya Sai Super Speciality Hosp (<... Sri Sathya Med Sci Specialty Hosp (<... Narayana Hrudhayalaya Multispecial...

Educational Facility

India International School (<3km)

Recreation

PLaY Arena (<9km), Q Cinemas (<10km), Windmills Craftworks (<10km), The Country Club (<7km), Kicks on Grass (<9km), The Heritage Centre & Aerospace M... DECATHLON (<13km), Tulsi Theatre (<8km), Sobha Lake View Club House (<10km).

Petrol Station

Hindustan Petroleum (<8km), Shell (<5km)

ATM/Bank/Exchange

ICICI BANK (<7km), HDFC Bank-Karthiknagar (<9km)

* All distances are approximate

Properties

PSI Oliver News

Expert Reviews on PSI Oliver

Explore

[Projects in Bangalore](#)

[Brokers in Bangalore](#)

More Information

Report a problem with this listing

Is any information on this page outdated or incorrect?

[Report it!](#)

Disclaimer: All information is provided by advertisers, including builders/agents/owners, or collected from publicly available sources and may not be verified under RERA. Any information provided on this website, including facts and figures, should be verified independently, including via the relevant RERA website, before entering into any transaction. PropertyWala.com is only an advertising platform to help connect buyers and sellers and is not a party to any transaction, nor shall be responsible or liable to resolve any disputes between them.

[Home](#) » [Bangalore Real Estate](#) » [Projects in Bangalore](#) » [PSI Oliver - Gunjur, Bangalore](#)