

Peninsula Park Elite - Sarjapur, Bangalore



Wonderfully developed and practically built for the present day residing

Peninsula Park Elite by Peninsula Infra Development Pvt. Ltd. at the very prime location of Sarjapur in Bangalore offers residential project that host 3 bhk villas in various sizes.

- Project ID: J456751189
- Builder: Peninsula Infra Development Pvt. Ltd.
- Location: Peninsula Park Elite, Sarjapur, Bangalore - 562125 (Karnataka)
- Completion Date: Sep, 2023
- Status: Started

Description

Peninsula Park Elite by Peninsula Infra Development Pvt. Ltd. is conveniently situated at Sarjapur, Bangalore. The project is spread over 1580 - 1740 sq.ft. comprising of 3 bhk villas in various sizes. The project is well equipped with 24Hrs Water Supply CCTV Cameras Club House Compound Covered Car Parking Gated Community Gym Indoor Games Library Party Area and nearby connectivity such as schools-colleges, hospitals, metro connectivity public transport etc.

Rera Id: PRM/KA/RERA/1251/308/PR/200103/003127

Amenities:

- 24Hrs Water Supply
- CCTV Cameras
- Club House
- Compound Covered Car Parking
- Gated Community
- Gym
- Indoor Games
- Library
- Party Area
- Play Area
- Rain Water Harvesting
- Street Light
- Swimming Pool
- Table Tennis
- Tennis Court
- Waste Management
- 24Hrs Backup Electricity
- Fire Safety
- Intercom
- Vastu / Feng Shui compliant

Peninsula Infra Development Pvt. Ltd. Sustainability, affordability and Excellence are just some of the factors that we rely on to deliver world class homes.

Established and managed by people with decades of experience in designing, developing and delivering villas par excellence Peninsula Infra has earned the enviable reputation of a quality property.

Features

Luxury Features

- Power Back-up ■ Lifts

Exterior Features

- Reserved Parking ■ Servant Quarter

Maintenance

- Maintenance Staff ■ Rain Water Harvesting

Security Features

- Security Guards ■ Intercom Facility ■ Fire Alarm

Recreation

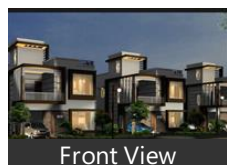
- Swimming Pool ■ Park ■ Fitness Centre / GYM
- Club / Community Center

Land Features

- Club / Community Center ■ Water Connection
- Electric Connection ■ Close to Hospital
- Close to School ■ Close to Shopping Center/Mall

Gallery

Pictures



Floor Plans



Master Plan



Floor Plan A



Floor Plan B



Location Map

Location

Landmarks

Building

Confident Atik (<6km), Midtown Opulent (<13km), Sowparnika Swastika (<13km), Raaya Homes (<13km), MBR Group (<1km), Pavans Brundavan (<1km), SV Royal Homes (<1km), Brickfield Gempark (<2km), Peninsula Pinewoods (<2km), Peninsula Solitaire (<2km), BRV Enclave (<3km), Pushpam Woods (<3km), Heritage County (<3km), Ozone KNS Oasis (<3km), Pentagon Passiflora (<3km), Peninsula Passiflora (<3km), Metropolis Fair Oaks (<3km), Pump House (<3km), Anupam Lifestyle Villa (<3km), Skylite Serendipity (<3km), Peninsula Palmville (<3km), Peninsula Parkville (<3km), Sowparnika Tharangini (<3km), Dbsowparnikatharangini (<3km), Shriram Malhaar (<3km), smart Neighbours Hoods (<4km), Anupam (<4km), Prakruti Villa (<4km), Sree Bliss County (<4km), Dreamz Lambodhar (<4km), Icon Sanctuary (<4km), Skylite Vesta (<4km), Peninsula Pinnacles (<4km), Peninsula Prakruthi (<4km), Excel Oxygen (<4km), Geown Oasis (<4km), Urban Greens (<4km), SNR Verity (<4km), Urban Greens-51 (<4km), Urban Greens-33 (<4km), Urban Greens-17 (<4km), Urban Greens-30 (<4km), Urban Greens-34 (<4km), Urban Greens-18 (<4km), Urban Greens-48 (<4km), Pushpalok (<4km), Urban Greens-54 (<4km), Urban Greens-8 (<4km), Urban Greens-46 (<4km), Urban Greens-55 (<4km), Urban Greens-27 (<4km), Urban Greens-21 (<4km), Urban Greens-9 (<4km), Urban Greens-26 (<4km), Urban Greens-39 (<4km), Urban Greens-44 (<4km), Urban Greens-10 (<4km), Urban Greens-25 (<4km), Urban Greens-40 (<4km), Urban Greens-11 (<4km), Urban Greens-58 (<4km), Urban Greens-43 (<4km), Urban Greens-12 (<4km), Urban Greens-24 (<4km), Urban Greens-41 (<4km), Indes Urban Habitat (<4km), Urban Greens-94 (<4km), Urban Greens-127 (<4km), Urban Greens-95 (<4km), Urban Greens-110 (<4km), Urban Greens-112 (<4km), Urban Greens-93 (<4km), Urban Greens-128 (<4km)

Accommodation

Ayurvedagram (<14km)

Hotel

Jain Farms (<11km), Imera Spa and Resorts (<4km), Spot on 48301 Thirumala Boarding &..

ATM/Bank/Exchange

Dena Bank-Neriga (<5km), Axis Bank (<14km), Dena Bank (<3km)

Recreation

Vinayaka Theatre (<13km), Bidaraguppe Lake (<13km)

Restaurant & Shops

Shree Vishnu Gas Agencies-Indane (<3km), Shri Krishna Enterprises (<3km), Rajalakshmi Electricals (<3km), S. R. S All Kinds of Works (<3km), Honaram Hardware (<3km), Chandana Juice & Chats (<3km), Raghavendra Icecream Parlour (<3km), Surya Bakery (<3km), V. K. V Electricals & Electronics (<3km), Krishna Hardware & Electricals (<4km), Appi Bakery and Sweets (<4km), Aishwarya Bakery & Sweets (<4km), Limras Medical & General Store (<4km), S. G. Provision Stores (<4km), Leo Steels (<4km), Sri Ayyappa Swamy Traders (<4km), Pooja Wines (<4km)

Hospitals & Clinics

Ashwini Clinic (<3km)

* All distances are approximate

Properties

Peninsula Park Elite News

■ Prestige Finsbury Park Upcoming Apartments in North Bangalore

Yesterday - Prestige Finsbury Park is the massive new luxury-themed residential Apartment project launched in Bagalur, Aero Space Park, Bangalore. The project offers spacious Apartments with luxurious features. [more](#)

■ Honda Jazz On Road Price in Bangalore

This price includes GST and any state/city entry tax. However, the ex-show room price does not include RTO, Insurance, Fast tag, and other accessories cost. The insurance cost on CarTrade covers 1 ... [more](#)

■ Blissful Singapore Honeymoon Package From Bangalore

20 days ago - Explore our well-curated 4 nights 5 days Singapore honeymoon packages from Bangalore, and give us an opportunity to ... 5 Days View Details Nestled at the southern tip of the Malay Peninsula in ... [more](#)

■ Fairfield Inns in Bangalore District

Jul 1, 2018 - Some of the best Fairfield Inns in Bangalore District are: Fairfield by Marriott Bengaluru Outer Ring Road - Traveller rating: 5.0/5 Fairfield by Marriott Bengaluru Whitefield - Traveller rating: ... [more](#)

■ Peninsula Grand

Jan 23, 2018 - Situated in the close proximity to the major business and shopping hubs, Peninsula Grand offers an easy access to the international and domestic airports. The hotel is one of the best luxury hotels in ... [more](#)

■ Peninsula Beach Resort Calangute, Goa

Jul 4, 2020 - 50+ travelers loved staying in Peninsula Beach Resort because of its comfortable rooms and top-notch amenities. Against the backdrop of charming neighborhoods, this 3-star resort will take you back to ... [more](#)

■ Estate Agencies in Southern Peninsula

Mar 1, 2021 - Greeff Christie's International Real Estate - Southern Peninsula has 44 listings in Southern Peninsula and a total of 44 listings. RE/MAX Premier agents give their clients the best opportunity of ... [more](#)

■ Doha among top destinations from Bengaluru Airport

Jan 25 - According to Bangalore International Airport Ltd (BIAL), which manages KIA, Doha joins Dubai, Male, London Heathrow, and Frankfurt as the top cities, contributing 70% to the airport's traffic. [more](#)

■ Alfardan Group and Elite Paper Recycling partner on sustainability

9 days ago - Doha: Alfardan Group and Elite Paper Recycling have joined hands to promote environmental sustainability and recycling in Qatar. This agreement includes national and international public outreach ... [more](#)

Expert Reviews on Peninsula Park Elite

Explore

[Projects in Bangalore](#)

[Brokers in Bangalore](#)

More Information

Report a problem with this listing

Is any information on this page outdated or incorrect?

[Report it!](#)

Disclaimer: All information is provided by advertisers, including builders/agents/owners, or collected from publicly available sources and may not be verified under RERA. Any information provided on this website, including facts and figures, should be verified independently, including via the relevant RERA website, before entering into any transaction. PropertyWala.com is only an advertising platform to help connect buyers and sellers and is not a party to any transaction, nor shall be responsible or liable to resolve any disputes between them.

[Home](#) » [Bangalore Real Estate](#) » [Projects in Bangalore](#) » [Peninsula Park Elite - Sarjapur, Bangalore](#)