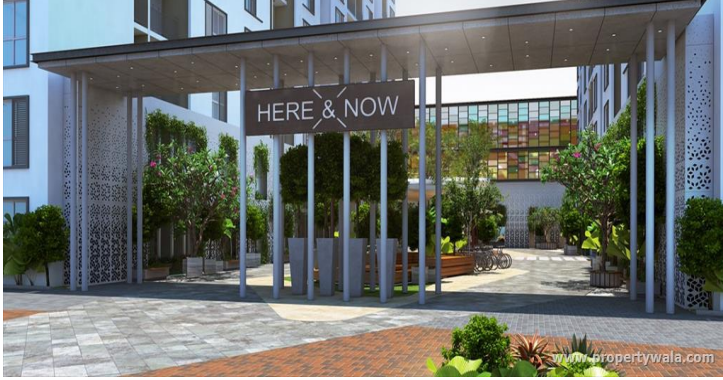


Assetz Here & Now - Rachenahalli, Bangalore



Modern and designed to complement global lifestyles

Assetz Here & Now is presented by Assetz Property Group at Rachenahalli, Bangalore offers residential project that hosts 1/2/3 BHK apartment with distinct and uber-modern vibe.

- Project ID: J592811895
- Builder: Assetz Property Group
- Location: Assetz Here & Now, Rachenahalli, Bangalore (Karnataka)
- Completion Date: Dec, 2020
- Status: Started

Description

Assetz Here & Now spread across 3 well-planned acres, and located at Rachenahalli, Bangalore is Here & Now. Apartments in north Bangalore that are modern and designed to complement global lifestyles. It incorporates innovative, smart design to give its denizens a space that is impressively crafted to echo the philosophy and energy of here and now. There are WiFi zones, cluster areas for getting together, a range of amenities, ample open spaces to find a quiet corner, and 332 homes that offer you a range of living styles - from smart, compact studios to comfortable 1, 2 & 3 BHK apartments.

RERA No :- PR/KN/170731/000797

Amenities :

- Club House
- Swimming Pool
- Gymnasium
- Children's Play Area
- Intercom Facility
- Fire Fighting System
- Badminton Court
- Lift

Assetz Property Group founded in 2006, is a front-runner among multinational developers in India with over 10 million square feet under development. Assetz, headquartered in Singapore, is a multi-faceted real estate development and asset management company with four business verticals: Commercial, Residential, Warehousing and Fund Management.

Features

Luxury Features

- Lifts

Exterior Features

- Reserved Parking

Security Features

- Security Guards ■ Fire Alarm

Recreation

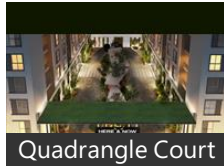
- Swimming Pool ■ Park ■ Fitness Centre / GYM

Gallery

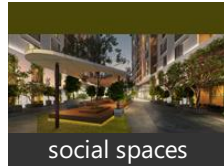
Pictures



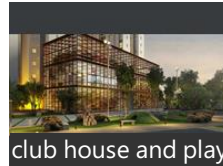
Front View



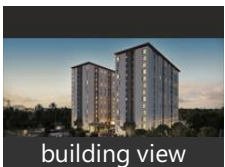
Quadrangle Court



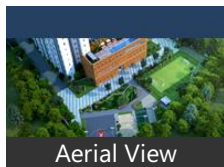
social spaces



club house and play

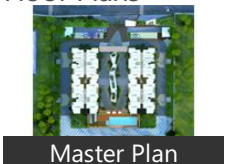


building view



Aerial View

Floor Plans



Master Plan

Location

Landmarks

Recreation

Manyata Embassy Business Park (<1k.. Lumbini Gardens (<4km), Palace Ground (<10km), PVR Cinemas-MSR Elements Mall (<... Snow City (<10km), Bangalore Palace (<11km), Pushpanjali-Sultanpalya (<7km), Hennur Banaswadi Cosmopolitan Cl... Fun Cinema (<12km), Mukunda Theatre (<9km), Orion East Mall (<9km), Fun World-Entrance 1 ■■■■■... Naatyakalakshetra Academy for Fine...

Shopping Centre

MSR Regaliaa Elements Mall (<3km), Esteem Mall (<5km), Orion East Mall (<9km), Brigade Orion Mall (<13km), Matri Mall (<13km)

Hotel

Chairman, The Royale Senate-Hebbal (<6km), Fortune Select JP Cosmos (<12km), The Lalit Ashok (<12km), Royal Orchid Resort & Convention C... Grand Bee Hotel (<12km), Shangri-la Hotel Bengaluru (<12km), Citrus Hotels (<12km), Lemon Tree Premier-Ulsoor Lake (<1.. Church Street Social (<14km), Roseline Suites (<7km), Ramanashree Brunton Road (<14km), The Park Bangalore (<14km), Howard Johnson-Nagavara (<3km), Taj West End (<13km), The Chevron Hotel (<13km), Hyatt Centric MG Road Bangalore (<... Taj MG Road Bengaluru (<14km), Godrej Woodsman Estate (<5km), Sheraton Bangalore Hotel (<13km), One Atria Cafe (<14km), Hotel Nandhana Vista (<8km), Le Meridien-Bangalore (<12km), The Sanctum Suites Bangalore (<9km. Hotel Swathi (<14km), Maple Inn-Kempapura (<4km), Hotel Dew Drops (<14km), Country Inn & Suites By Radisson Be... Hotel Trinity Isle (<14km), Citrine Hotel (<14km), Savoury Restaurant (<10km), Howard Johnson by Wyndham Beng... Zone By The Park Infantry (<13km), Hotel Paraag (<13km), MSR Hotel & Spa Bangalore (<11km), Liwa Hotel (<5km)

Business & Services

Kirloskar Business Park (<5km), Prestige Atrium (<13km), Bharat Electronics-Main Gate ■■■|... Bagmane Tech Park (<14km), RMZ Infinity (<12km)

Building

Sobha Chrysanthemum (<2km), Karle Town Centre (<3km), Orchid Woods (<4km), Kemp Fort (<7km), SLS Symphony (<3km), Krishna Northwoods (<3km), R & S Riviera (<1km), R and S Riviera Bangalore (<1km), Eco Narasimha (<6km), Crystal Enclave (<6km), Sobha City ■■■■■ ■■■■ (<3km), Sobha Petunia (<4km)

Public Transport

Hebbal (<6km), Hebbal Railway Station (<6km), Yelahanka Railway Station (<8km), Banaswadi Railway Station (<9km), Nagavara (<4km), Cantonment Railway Station (<11km.. Bmtc Kalyannagar Bus Station (<6km.. Bel Circle (<10km), KR Puram Railway (<12km), Mekhri Circle-NB (<9km), Shivajinagar Bus Station (<13km), Yeshwanthpur JN Railway Station (<1.. Bangalore Cantonment South Weste...

Hospitals & Clinics

Columbia Asia Hospital-ER (<5km), Dr Ambedkar Medical College Hosp ... MS Ramaiah Memorial Hospital-ER (... Orthopaedic Clinic (<7km), Specialist Hospital (<8km), Dr B R Ambedkar Medical & Hospita... Sham, MS Ramaiah Memorial Hospital (<10..

ATM/Bank/Exchange

State Bank of India (<2km), City Union Bank-Yelahanka New Tow. Canara Bank (<6km), South Indian Bank (<6km)

Restaurant & Shops

Reliance Fresh (<4km), Patels Inn (<7km)

Accommodation

Club Cabana (<5km)

Landmark/Attraction

Mahatma Gandhi (MG) Road (<14km)

* All distances are approximate

Properties

Assetz Here & Now News

- **India-China standoff may be one jolt too many for ailing Bengaluru toy industry**
13 hours ago - The toy industry in Bengaluru is gasping for breath and is set to suffer irreparable damage unless there is a dramatic turnaround in fortunes soon. With 70 percent of the much sought after modern toys ... [more](#)
- **India's education and hiring stand completely reformed with GrowthCode's future-ready platforms.**
13 hours ago - GROWTHCODE, a human resource actualization company engaged in increasing employability by creating a well-informed and skilled workforce by creating a self-sustaining strategic Industry - Academy - ... [more](#)
- **Maruti Suzuki is now offering new cars on lease: All you need to know**
22 hours ago - As car companies think about new ways to improve sales, Maruti Suzuki seems to have made the first move as it has unveiled a new scheme under which cars will be given to customers on lease. [more](#)
- **Mumbai: Vegetable prices soar as lockdown eases**
13 hours ago - Retailers said that farmers have incurred huge loss as labourers returned to their villages and no sowing seeds were not sowed for months, resulting in the price rise ... [more](#)
- **IIM-Bangalore best for executive MBA in India, two Indian institutes in Global 100: QS Ranking**
Yesterday - B has not only jumped 25 places as compared to last year but also is the only Indian institute in the top 50 globally. In the region-wise ranking, three Indian institutes made it to top 20. While ... [more](#)
- **Bengaluru: New hospital management system impacts ambulance service; details**
14 hours ago - Ambulances that carry patients to the hospitals have been facing many issues including being stranded in front of hospitals (due to lack of paperwork), refusal of doctors to get in and mismanagement. [more](#)
- **Syook Mobilizes IoT-based Social Distancing App in the Fight Against COVID-19**
2 days ago - Syook, for example, has launched a login-free "Social Distancing" App. Using only Bluetooth-based tracing, this app from Syook is a probable answer to the privacy concerns around current social ... [more](#)
- **Karnataka revises quarantine SOPs, curfew timings: Here are the new guidelines**
3 days ago - The Karnataka government has reimposed Sunday lockdown, extended night curfew and revised its SOPs on home quarantine for domestic passengers. Here are the new guidelines ... [more](#)
- **This Startup Makes Preservative-Free Natural Chips Using Chikoo, Okra & More**
15 hours ago - Under the brand name 'Fruit Treat', he started manufacturing 12 varieties of snacks using jackfruit, banana, chikoo, okra, papaya, mango, sweet potatoes, beetroot, and garlic, among others. About 100 ... [more](#)
- **Watch: Bangalore Broadway Company recreates Nordic Polska with acapella**
Yesterday - The screen opens to a woman singing. The syllables don't make sense, but it's almost as though she is yodelling. The scene then shifts to three men, seemingly singing the same set as the woman, but it ... [more](#)
- **Global Startup Ecosystem Report 2020: Bangalore, Delhi, Mumbai rated among world's top startup ecosystems**
8 days ago - Bangalore stood out for high access to funding and Delhi ranked well for the volume and complexity of patent creation in the analysis, which found London and New York tied for second spot. [more](#)
- **Top five: Best bowling figures in IPL**
23 hours ago - Here is a look at the bowlers with the best bowling figures in the IPL: Alzarri Joseph (MI) - 6/12 vs Sunrisers Hyderabad in 2019, Sohail Tanvir (RR) ... [more](#)

Expert Reviews on Assetz Here & Now

Explore

[Projects in Bangalore](#)

[Brokers in Bangalore](#)

More Information

Report a problem with this listing

Is any information on this page outdated or incorrect?

[Report it!](#)

Disclaimer: All information is provided by advertisers, including builders/agents/owners, or collected from publicly available sources and may not be verified under RERA. Any information provided on this website, including facts and figures, should be verified independently, including via the relevant RERA website, before entering into any transaction. PropertyWala.com is only an advertising platform to help connect buyers and sellers and is not a party to any transaction, nor shall be responsible or liable to resolve any disputes between them.

[Home](#) » [Bangalore Real Estate](#) » [Projects in Bangalore](#) » [Assetz Here & Now - Rachenahalli, Bangalore](#)