

Godrej 24 - Sarjapur Road, Bangalore



Apartments that are thoughtfully crafted with amenities.

Godrej 24 in Bangalore, Sarjapur Road offers an unmatched residential apartment which offers 1 bhk, 2bhk and 3 bhk apartment with the size ranges from 653 sq. Ft. to 1600sq. Ft.

- Project ID: J811901817
- Builder: Godrej Properties
- Location: Godrej 24, Chembenahalli Village Sarjapura Hobli, Sarjapur Road area, Bangalore - 562125 (Karnataka)
- Completion Date: Jun, 2020
- Status: Started

Description

Godrej 24 is the premium residential project developed by the Godrej Properties at Sarjapur Road, Bangalore which offers 1 bhk, 2bhk and 3 bhk apartment with the size ranges from 653 sq. Ft. to 1600sq. Ft with perfect combination of contemporary architecture and features to provide comfortable living. The project has amenities like swimming pool, gymnasium, and park etc in the premises. The area is lined by hubs of health care, hospitals, schools, shopping malls, restaurants and other facilities. The nearest railway station lies at a distance of 3.6 km, and the airport is at a distance of 55 km from the complex.

Amenities:

- Landscaped gardens
- Indoor games
- Multipurpose games
- Swimming pool
- Gymnasium
- Jogging track
- Yoga and meditation room
- Play area
- Badminton court
- Cricket Court
- Basket ball court
- Play area
- Party area
- Senior citizen park
- Siting area
- Visitors parking
- Spa
- Amphitheater

Godrej Properties Ltd is the real estate segment of the 120-year Godrej Group. Established in 1990, the developer is known for its excellent craftsmanship in developing contemporary housing projects which cover commercial, infrastructural and residential spaces including townships. It has been accredited with over 200 awards and recognitions such as the "Real Estate Company Of The Year" at the Construction Week India Awards 2015, 'Golden Peacock Award for Sustainability' for the year 2015 by Institute Of Directors (IOD), "

Features

Security Features

- Security Guards ■ Electronic Security
- Intercom Facility ■ Fire Alarm

Lot

- Basement

Exterior Features

- Reserved Parking ■ Visitor Parking

Maintenance

- Water Supply / Storage ■ Boring / Tube-well
- Rain Water Harvesting

Lot Features

- Balcony ■ Private Garden ■ Corner Location
- Park Facing

Interior Features

- Feng Shui / Vaastu Compliant

Recreation

- Swimming Pool ■ Park ■ Fitness Centre / GYM
- Club / Community Center

General

- Power Back-up ■ Centrally Air Conditioned
- Room AC ■ Lifts ■ High Speed Internet ■ Wi-Fi

Gallery

Pictures



Aerial View



Elevation

Floor Plans



Master Plan



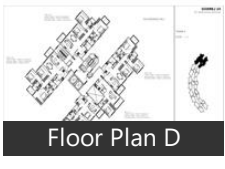
Floor Plan A



Floor plan B



Floor Plan C



Floor Plan D



Floor Plan E



Floor Plan F



Floor Plan G



Floor Plan H



Location Map



Master Plan

Location

Landmarks

Hotel

Miraya Hotel Whitefield Bengaluru (<. FOUR POINTS BY SHERATON-Benga... Bengaluru Grill House (<14km), Octave Hotel & Spa (<13km), Oyo Flagship 475 Marathahalli (<14k... Aloft Bengaluru Cessna Business Par... The Orange Hotel-Marathalli (<14km.. ibis Bengaluru Outer Ring Road Hote.. Ebenezer Suites (<13km), OYO 5108 The Retreat Hotel (<13km), Palm Meadows Club-Ramagondana... Collection O 30042 Melody Inn White.. Nagarjuna Suites (<13km), NOVOTEL Hotel-Bellandur (<14km)

Building

Asset Aura (<8km), Purva Riviera (<13km), Confident Atik (<4km), Vaswani Reserve (<12km), Sun City Gloria (<9km), Parimala Trinity (<12km), Vaswani Brentwood (<12km), Prestige Ozone (<11km), Sri Krishna Ventures (<12km), Tzed Homes (<11km), VDB Azure (<8km), Midtown Opulent (<8km), Manar Silver Shadows (<14km), Asset Gardenia & Asset Enclave (<11... Arcade Dreams (<13km), Sowparnika Sanvi (<13km), Sohum Isiri (<12km), Mantri Commercio (<14km), Concorde Amber (<10km), Salarpuria Sanctity (<13km), Isha Misty Green Whitefield (<13km), Rohan Vasantha (<13km), Purva Fountain Square ... Laughing Waters. ... Palm Meadows (<11km), Surbacon Maple (<11km), Samrudhi (<14km), Sobha Rose (<11km), Prime Lavender (<12km), Dna Infrastructure (<12km), Balaji Pristine (<12km), MSR Residency (<12km), Amrutha Value (<13km), LOTUS Palace (<14km), Raaya Homes (<8km), Banyan Tree Apartments (<14km), Renaissance Rainbow (<14km), Sobha Iris (<14km), Pearl Shell (<9km)

Public Transport

Carmelaram Railway Station (<10km), Kundalahalli Gate (<12km), Marathahalli Ring Road Bridge (<14k... Marthahalli Bridge & Ring (<14km), Bellandur Road Railway Station (<11k...

Shopping Centre

Forum Value Mall (<11km), Brookefield Mall (<13km), Forum Neighbourhood Mall (<11km)

Business & Services

Decathlon Sports India (<9km), Wipro Corporate Office (<13km), Prestige Tech Park (<13km), Cosmos Mall (<13km)

Educational Facility

India International School (<8km), Vydehi Institute of Medical Sciences ...

Hospitals & Clinics

Sakra World Hospital (<14km), Vydehi Hospital (<14km), Ayurvedagram (<12km), Sankara Eye Hospital (<13km), Yashomati Hospitals (<13km), Sri Sathya Sai General Hospital-ER (<... V I M S Specialty Hospital-ER (<13km.. Optic Nest (<14km), The Appolo Clinic (<14km)

Recreation

The Country Club (<13km), Shri Vinayaka Theatre Varthur (<7km), MRC Cycle Shop (<14km), Jagriti Theatre (<11km)

Petrol Station

Hindustan Petroleum (<14km), Shell (<11km)

Restaurant & Shops

MadhuLoka Liquor Boutique (<11km.. Reliance Fresh (<12km), Wildcraft (<13km), Ivy Rossa Resort (<12km), MAYURA BAKERY & SWEETS (<12km.. CROMA (<13km), Shree Vishnu Gas Agencies-Indane (<. More-Megastore (<13km), Fashion Big Bazaar-FBB (<13km), Pantaloons (<13km), Just Books CLC (<14km), Nilgiris (<14km)

ATM/Bank/Exchange

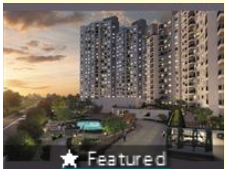
ICICI Bank Wealth Management (<10.. ICICI BANK (<13km), Dena Bank-Sarjapura (<6km), Indian Bank-New Horizon College O... Axis Bank (<8km)

* All distances are approximate

Properties

Properties available in 'Godrej 24'

1 Bedroom Flat for sale in Godrej 24, Sarjapur Road area, Ba. 38 lakhs



660 SqFeet Apartment @ Rs.5758/SqFeet

ID: P20312316 — Posted: Dec 11 by [Roji Bano](#)

Godrej 24 1 BHK in Bangalore ,Sarjapur Road (Godrej 24)

Strategically located in Sarjapur road with prominent access to reputed schools, colleges, hospitals, shopping malls and IT/ITES Companies 2 Site has an excellent access to neighboring micro-markets - Harlaur, Sarjapur, ORR, Varthur, Whitefield, Koramangala etc., 3 Employee work force ... [more details](#)

Godrej 24 News

Expert Reviews on Godrej 24

Explore

[Projects in Bangalore](#)

[Brokers in Bangalore](#)

More Information

Report a problem with this listing

Is any information on this page outdated or incorrect?

[Report it!](#)

Disclaimer: All information is provided by advertisers, including builders/agents/owners, or collected from publicly available sources and may not be verified under RERA. Any information provided on this website, including facts and figures, should be verified independently, including via the relevant RERA website, before entering into any transaction. PropertyWala.com is only an advertising platform to help connect buyers and sellers and is not a party to any transaction, nor shall be responsible or liable to resolve any disputes between them.

[Home](#) » [Bangalore Real Estate](#) » [Projects in Bangalore](#) » [Godrej 24 - Sarjapur Road, Bangalore](#)