

2 Bedroom Apartment / Flat for sale in Central Park Cerise Floors, Sohna,... 1.99 crore



★ Featured

2 Bedroom Apartment For Sale In Sohna, Gurgaon

Central Park Cerise Floors, Sohna, Gurgaon - 122103 (Ha...

- Project/Society: [Central Park Cerise Floors](#)
- Area: 1660 SqFeet ▾
- Bedrooms: Two
- Bathrooms: Two
- Transaction: New Property
- Price: 19,900,000
- Rate: 11,988 per SqFeet +55%
- Age Of Construction: 2 Years
- Possession: Immediate/Ready to move

Advertiser Details

Shree S.M. Realty
Dheerendra Pathak
Director

Sohna Road area, Gurgaon
mob: 9717381873
tel:
mail:
www.propertywala.com/shree-s-m-realty

Scan QR code to get the contact info on your mobile
[View all properties by Shree S.M. Realty](#)

Description

Central Park Cerise Floors is a luxurious premium apartment complex by Central Park offering exquisite and elegantly designed 2 BHK, apartments based in Sector 33 Sohna, Gurgaon. It has low rise air-conditioned with party terrace and elevator in a stilt + 4 floors setting. Complemented with an elevator, private parking and an open-air party terrace, it's perfectly polite to be immersed in luxury inspired by nature.

Amenities:

- Gymnasium
- Swimming Pool
- Cafeteria
- Golf Course
- 24 X 7 Security
- Jogging Track
- Lift Available
- Closed Car Parking
- Badminton Court
- Banquet Hall
- Cricket Pitch
- Gated Community
- Library
- Spa/Sauna/Steam
- Tennis Court
- Power_Backup
- CCTV

Please mention that you saw this ad on PropertyWala.com when you contact.

Location

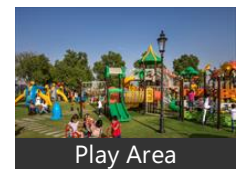
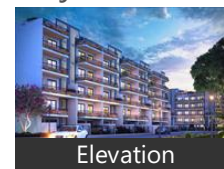
Pictures



Floor Plans

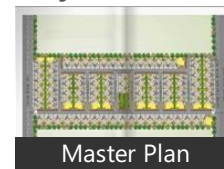


Project Pictures



* These pictures are of the project and might not represent the property

Project Floor Plans



* These floor plans are of the project and might not represent the property

* Location may be approximate

Locality Reviews

Sohna is a rapidly developing area located in the southern part of the Gurugram district in the Indian state of Haryana. It is known for its scenic beauty, proximity to the Aravalli Hills, and growing real estate market. The opening of Delhi-Mumbai Expressway, one of the largest infrastructure projects in India, boosted real estate development in the Sohna region, with luxury independent floors emerging as a key segment. The expressway, which spans 1,300 km, will provide seamless connectivity between Delhi and Mumbai, reducing travel time between the two cities to under 12 hours. This has led to

Sohna, Gurgaon

increased investor interest in the Sohna region, which is located along the expressway and is expected to benefit from improved connectivity.

Real estate developers in Sohna are already capitalizing on this opportunity, with several luxury housing projects in the pipeline. These projects focus on providing spacious and independent homes, catering to the needs of high-net-worth individuals and affluent families.

Pros:

- EMERGING EMPLOYMENT HUB
- MAJOR INFRASTRUCTURAL PROJECTS TAKING PLACE
- WELL CONNECTED WITH GURGAON CENTRAL

Posted: Sep 22, 2023 by [Navya Bhola \(Shri Sai Realtors\)](#)

Sohna is one of the most beautiful Indian place located in the heart of South Gurugram. The place is well known for its beautiful spot known as Damadama Lake. Every February, the annual Vintage Car festival held here and the town is also known for the water springs.

Pros:

- Damdama Lake
- Vintage Car Festival
- Sulphur Spring

Cons:

- Connectivity with New Delhi

Posted: Oct 12, 2021 by [Ekam Homes \(Ekam Homes\)](#)

Sohna is the best location for investment today. because today in Sohna many more upcoming Company & Employment. so that in my opinion Sohna is best location today .

Pros:

- Central Park Flower Valley

Posted: Apr 5, 2021 by [Praveen Dagar \(Ncr Spaces\)](#)

The property is part of a large integrated township spread across 1 acres of land. Located just a km from the nh248a and 7 km from just the westren hotel the farm house falls in an area with robust transport network and is equipped with amenities like sopping complexes derpartmental stores and high-Street markets the plots are park facing in the land

Education institutions

(1-10)km

1- Kiit college of engineering

2- Kr mangalam university

3- Dps maruti kunj

4- Gd goenka would school

Health care

(10-20)km

1- Max hospital

2- Fortis hospital

3- Medicity

4- Park hospital

Igi airport 40 mint drive

Rajiv chowk gurgoan 30 minutes drive

Hooda city centre 30 minutes drive

Kmp express 10 minutes drive

Delhi mumbai express 20 minutes drive

Posted: Sep 29, 2020 by Javed Khan

Sohna ko ek smart city bnaya ja ra h jise already Greater Gugaon ka naam diya ja chuka h, n Gurgaon k top most Famous builders move kr chuke h saath m Government Sohna m 2200 acres m Industrial area le kr aai h IMT Sohna or ye start b ho chuka h saath m sohna ko Delhi NCR m b laaya gya h or ab ise Delhi se connect kiya ja ra h KMP Express way k saath, saath m sohna m bhut si jagah h jaise Damdma Lake n hot water kund jismai nhane se sari skin problems dur ho jati h, so Sohna m bhut sari important things h jo apko janni chaiye..

Thank You

Pros:

- Connectivity with Delhi, Rajasthan, Haryana
- All Gurgaon top level Builders are moved on Sohna
- Hot Water Kund

Cons:

- now not properly developed
- now there is some village area

Posted: Sep 17, 2016 by Atul Kashyap

Sohna now becoming a new planned city name as Greater Gurgaon. Now As per Master plan-2031, new sectors of 1 to 36. many big developers are here with for big residential and commercials projects, schools, universities, Big malls, shopping complex.

Pros:

- Good Location

Posted: Nov 3, 2015 by [Yogi Raghav \(Nkv Farmhouse Developers Gurgaon\)](#)

Sohna is a best industrial area.

Pros:

- Good Location

Posted: Sep 24, 2015 by [Yogi Raghav \(Nkv Farm house Gurgaon\)](#)

Sohna is one of the best destination in Gurgaon. You have lots of residential and commercial projects coming up in this belt as well.

Pros:

- *Potential growth area*

Posted: May 14, 2015 by [Ankur M \(Milestone Capital\)](#)

Sohna is a good location for future prospects This projects in Sohna IMT and Near KMP Coridoor.

Pros:

- *Well Planned Area*

Posted: Dec 11, 2014 by [Jaswinder Singh \(Nestkeys Infratech\)](#)

Sohna is a residential community of apartments & plots are the opportunity for the lucky people. Central Park Group presents the exclusivity of owning your own house in the middle numerous conveniences and comforts. Situated on the rapidly developing Sohna Road, Central Park 3 is set to be a landmark. And the home of those in power. Central Park III is dotted with independent plots available in the sizes of 250 – 1000 sq. yards set among the scenic green landscape. Select from the few and the exclusive sites to make it your address.

Pros:

- *Well Planned Area*
- *Availability of good shopping centers, stores, cinema halls, schools*

Posted: Nov 20, 2014 by [Abhishek Kumar \(Global Wealth Planners\)](#)

Sohna, Gurgaon is rated 8 out of 10 based on 10 user reviews.

Disclaimer: The reviews are opinions of PropertyWala.com members, and not of PropertyWala.com.

Explore

[Similar Properties](#)

[Properties in Sohna, Gurgaon](#)

[Projects in Gurgaon](#)

[Brokers in Gurgaon](#)

More Information

Report a problem with this listing

Is this property no longer available or has incorrect information?

[Report it!](#)

Disclaimer: All information is provided by advertisers and should be verified independently before entering into any transaction. You may visit the relevant RERA website of your state to verify the details of this property. PropertyWala.com is only an advertising platform to help connect buyers and sellers and is not a party to any transactions, nor shall be responsible or liable to resolve any disputes between them.