

Office Space for rent in Sector 37, Faridabad

60,000



Office Space For Rent In Main Mathura Road Office Space, Sector 37, Faridabad - 121003 (Haryana)

- Area: 875 SqFeet ▾
- Bathrooms: Two
- Floor: Seventh
- Total Floors: Eleven
- Facing: East
- Furnished: Unfurnished
- Lease Period: 11 Months
- Monthly Rent: 60,000
- Rate: 69 per SqFeet
- Age Of Construction: 1 Years
- Available: Immediate/Ready to move

Advertiser Details

Amit Associate
Amit Kumar
Advertising Manager
Jasola Vihar, New Delhi
mob: 9910020760
tel: +91-11-6524152
mail:
www.propertywala.com/amit-associate

Scan QR code to get the contact info on your mobile
[View all properties by Amit Associate](#)

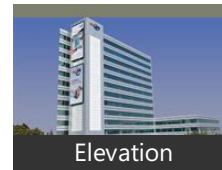
Description

FBD One has been envisioned as a New Age Information Technology hub which is fully equipped to deal with the fundamental and emerging requirements of the next business generation. Spread over 8.5 acres and designed with a future outlook, FBD One is coming up as a hot spot for commercial offices for IT and ITES companies supporting varying demands, complexities and ultra-modern demands with state-of-art facilities and a well-built ecosystem.

Please mention that you saw this ad on PropertyWala.com when you call.

Location

Pictures



Elevation

* Location may be approximate

Landmarks

Nearby Localities

[Anangpur](#), [Shehatpur](#), [Sector 42](#), [Ekta Nagar](#), [Sector 41](#), [Suraj Kund](#), [Sector 39](#), [Charmwood Village](#), [Sector 43](#)

* All distances are approximate

Locality Reviews

Sector 37, Faridabad

A well-developed place with all the facilities and amenities around. Good gentry, main road connectivity. Hospitals, schools, banks, markets, parks all nearby. Best place to live in.

Posted: Oct 22, 2021 by Jas KAUR

Sector 37 is having Crown Business Park Situated at Delhi Mathura Highway opposite of Sarai Metro Station. It is the next business park after Mohan cooperative area, having 7 lac + sq ft area and approx 2200 car parking space with 18 high speed elevators.

Pros:

- Next Business Stop After Mohan Cooperative Industrial Ares
- Near By Sarai Metro Station

Posted: Feb 9, 2016 by [Vikram Singh \(Pousny Group\)](#)

Sector 37, Faridabad is rated 9 out of 10 based on 2 user reviews.

Disclaimer: The reviews are opinions of PropertyWala.com members, and not of PropertyWala.com.

Explore

[Similar Properties](#)

[Properties in Sector 37, Faridabad](#)

More Information

Report a problem with this listing

Is this property no longer available or has incorrect information?

[Report it!](#)

[Projects in Faridabad](#)

[Brokers in Faridabad](#)

Disclaimer: All information is provided by advertisers and should be verified independently before entering into any transaction. You may visit the relevant RERA website of your state to verify the details of this property. PropertyWala.com is only an advertising platform to help connect buyers and sellers and is not a party to any transactions, nor shall be responsible or liable to resolve any disputes between them.