

6 Bedroom Farm House for rent in Chattarpur, New Delhi

5 lakhs



Farm House In Chattarpur, New Delhi

, Chattarpur, New Delhi - 110049 (Delhi)

- Area: 9000 SqFeet ▾
- Bedrooms: Six
- Bathrooms: Six
- Monthly Rent: 500,000
- Rate: 56 per SqFeet **-20%**
- Available: Immediate/Ready to move

Description

An excellent location fully developed farm house in radhey mohan drive, Chattarpur, Land area 2.5 acres with rich neighborhood surroundings , 20 minutes drive from gurgaon and 25-30 minutes drive from central delhi , Having 6 bedrooms with attached bathrooms , Large drawing & dining space , 2 big lobby , Modular kitchen , Large swimming pool , 4 servant quarters , Lush green landscape , Clients preferred mnc's, Foreigners & corporate groups only.

When you call, don't forget to mention that you saw this ad on PropertyWala.com.

Features

Other features

- Builtup Area: 9000 Sq.Ft. ■ Freehold ownership
- East Facing ■ Balconies: More than 3
- 1 to 5 years old
- Additional Rooms: Pooja Room, Study Room, Servant Room
- Marble Flooring ■ Furnishing: Semifurnished
- Reserved Parking

Location

* Location may be approximate

Landmarks

Nearby Localities

[Gadaipur](#), [Andheria Mor](#), [Chhattarpur Enclave](#), [Chattarpur Enclave Phase 2](#), [Mehrauli](#), [Chhattarpur Enclave Phase1](#), [Vasant Kunj Sector-D](#), [Sultanpur](#), [Ber Sarai](#), [Neb Sarai](#), [Chhattarpur Enclave](#), [Chattarpur Enclave Phase 2](#), [Chhattarpur Enclave Phase1](#), [Chhattarpur Extension](#), [Vasant Kunj Sector-D](#), [Neb Sarai](#), [Khanpur](#), [Vasant Kunj](#), [Chandan Hola](#), [Andheria Mor](#), [Chhattarpur Enclave](#), [Chattarpur Enclave Phase 2](#), [Mehrauli](#), [New Manglapuri](#), [Chhattarpur Enclave Phase1](#), [Chhattarpur Extension](#), [Vasant Kunj Sector-D](#), [IGNOU Road](#), [Sultanpur](#), [Andheria Mor](#), [Chhattarpur Enclave](#), [Chattarpur Enclave Phase 2](#), [Mehrauli](#), [New Manglapuri](#), [Chhattarpur Enclave Phase1](#), [Chhattarpur Extension](#), [Vasant Kunj Sector-D](#), [Kishangarh Village](#), [IGNOU Road](#), [Andheria Mor](#), [Chhattarpur Enclave](#), [Chattarpur Enclave Phase 2](#), [Mehrauli](#), [Chhattarpur Enclave Phase1](#), [Chhattarpur Extension](#), [Vasant Kunj Sector-D](#), [Kishangarh Village](#), [Sultanpur](#), [Neb Sarai](#), [Khanpur](#), [Andheria Mor](#), [Chhattarpur Enclave Phase 2](#), [Chhattarpur Enclave Phase1](#), [Sultanpur](#), [Neb Sarai](#), [Vasant Kunj](#), [Radhey Mohan](#), [Andheria Mor](#), [Chhattarpur Enclave](#), [Chattarpur Enclave Phase 2](#), [Chhattarpur Enclave Phase1](#), [Vasant Kunj Sector-D](#), [Sultanpur](#), [Neb Sarai](#), [Vasant Kunj](#), [Radhey Mohan](#), [Andheria Mor](#), [Chhattarpur Enclave](#), [Chattarpur Enclave Phase 2](#), [Mehrauli](#), [Chhattarpur Enclave Phase1](#), [Sultanpur](#), [Neb Sarai](#), [Vasant Kunj](#), [Radhey Mohan](#), [Andheria Mor](#), [Chhattarpur Enclave Phase 2](#), [Chhattarpur Enclave Phase1](#), [Vasant Kunj Sector-D](#), [IGNOU Road](#), [Sultanpur](#), [Neb Sarai](#), [Vasant Kunj](#), [Radhey Mohan](#), [Andheria Mor](#), [Chattarpur Enclave Phase 2](#), [Chhattarpur Enclave Phase1](#), [Vasant Kunj Sector-D](#), [IGNOU Road](#), [Sultanpur](#), [Neb Sarai](#), [Vasant Kunj](#), [Sainik Farm](#), [Radhey Mohan](#), [Chattarpur Enclave Phase 2](#), [IGNOU Road](#), [Sultanpur](#), [Neb Sarai](#),

Advertiser Details



Sanjeet Sharma
 Property Agent / Broker / Consultant
 Vasant Vihar, New Delhi

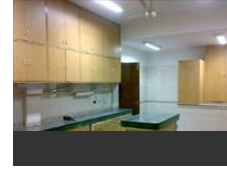
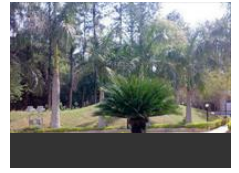
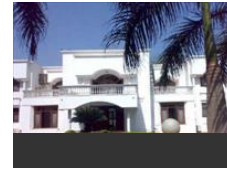


mob: 9810069114
 tel: 11-46541532
 mail:
www.sharmaestates.in

Scan QR code to get the contact info on your mobile

[View all properties by Sharma Estates](#)

Pictures



[Vasant Kunj](#), [Sainik Farm](#), [Radhey Mohan](#), [Andheria Mor](#), [Chhattarpur Enclave](#), [Chhattarpur Enclave Phase 2](#), [IGNOU Road](#), [Sultanpur](#), [Neb Sarai](#), [Vasant Kunj](#), [Sainik Farm](#), [Radhey Mohan](#), [Andheria Mor](#), [Chhattarpur Enclave](#), [Chhattarpur Enclave Phase 2](#), [Kishangarh Village](#), [Sultanpur](#), [Neb Sarai](#), [Vasant Kunj](#), [Sainik Farm](#), [Radhey Mohan](#), [Andheria Mor](#), [Chhattarpur Enclave](#), [Chhattarpur Enclave Phase 2](#), [Chhattarpur Enclave Phase 1](#), [Sultanpur](#), [Nimore...](#)

Locality Reviews

Chattarpur, New Delhi

Chattarpur Best Connectivity towards most parts of Gurgaon Faridabad and Delhi also near by metro which make travel easy and also all conveyance are there , sharing auto cabs etc

Pros:

- *Good locality*
- *Near metro*
- *Good flats*

Cons:

- *Freehold property less inventory*

Posted: Jan 15, 2020 by Tarun Chaudhary

Chhatar Pur Famous for Indian culture There Many Hindu temple Like Shani Mandir And More Temples I Request Please Visit Here One Of The Most Thing Nearest IGI Airport

Pros:

- *Hindu Temple*
- *Nearest Airport*
- *Supporting People*

Cons:

- *Traffic Issue After 5:00 Pm*

Posted: Feb 5, 2019 by Kamlesh Kumar

Chattarpur is on south Delhi location there are many tourism locations to visiting like Chattarpur temple that's largest temple in south Delhi , few minutes distance of Radha Swami Satsang Vyas or Gurug ashram more likes hills areas night safari etc.

Pros:

- *Best Location*
- *Metro station*

Posted: Jul 8, 2015 by [Shyam Sharma \(Sagar Properties\)](#)

Chattarpur, located in South Delhi, enjoys easy connectivity to Gurgaon, Faridabad and most parts of Delhi. It is a premium, green and peaceful locality devoid of noise pollution. The nearby localities include Gadaipur, Andheria Mor, New Manglapuri, Mehrauli, IGNOU Road, Sultanpur etc. The locality offers a good mix of apartments, farm houses, independent houses and plots. The locality is known for the lavish farm houses it has which often become the venue for lavish weddings in the city. Apartment configurations of 1 to 6 BHK and independent houses are available in the area. Nirvana Apartments are one of the most popular societies here. Properties for rent are also available here.

Pros:

- *Totally green area with fresh air*
- *Metro Available*
- *Availability of good shopping centers, stores, cinema halls, schools*

Posted: Feb 24, 2015 by [Manvinder Yadav \(Global Inestors\)](#)

Chattarpur is a part of South Delhi which is famous for farmhouses and is a green area. Chattarpur Extension is a colony located in Chattarpur which is a listed colony and needs to be regularized soon. This area is also metro connected. Good place for people working in Gurgaon.

Pros:

- *Metro connected*
- *Newly constructed apartments*
- *Good place for people working in Gurgaon*

Posted: Sep 23, 2013 by [Mahender Sharma \(Daksh Properties\)](#)

Chattarpur, New Delhi is rated 9 out of 10 based on 5 user reviews.

Disclaimer: The reviews are opinions of PropertyWala.com members, and not of PropertyWala.com.

Explore

[Similar Properties](#)

[Properties in Chattarpur, New Delhi](#)

[Projects in New Delhi](#)

[Brokers in New Delhi](#)

More Information

Report a problem with this listing

Is this property no longer available or has incorrect information?

[Report it!](#)

Disclaimer: All information is provided by advertisers and should be verified independently before entering into any transaction. You may visit the relevant RERA website of your state to verify the details of this property. PropertyWala.com is only an advertising platform to help connect buyers and sellers and is not a party to any transactions, nor shall be responsible or liable to resolve any disputes between them.