

## Peninsula Salsette 27 - Byculla, Mumbai



Provides comfortable and lavish lifestyle

Peninsula Salsette 27 by Peninsula Land Ltd at the very prime location of Byculla East in Mumbai offers residential project that host 2 bhk and 3 bhk apartments in various sizes.

- Project ID: J517211895
- Builder: Peninsula Land Ltd
- Location: Peninsula Salsette 27, Byculla, Mumbai - 400027 (Maharashtra)
- Completion Date: Dec, 2022
- Status: Started

### Description

**Peninsula Salsette 27** by Peninsula Land Ltd at the very prime location of Byculla East in Mumbai offers residential project that host 2 bhk and 3 bhk apartments in the size ranges in between 772 to 1167 sqft. The project host various amenities like lift, gym, cctv camera etc for the residents. The project is located in the very prime location of Mumbai and is easily connected with other parts of the city.

#### Amenities:

- 24Hrs Water Supply
- CCTV Cameras
- Club House
- Community Hall
- Compound Covered Car Parking
- Gated Community
- Gym
- Jogging Track
- Landscaped Garden
- Lift
- Multipurpose Games Court
- Party Area
- Rain Water Harvesting
- Street Light
- Swimming Pool
- Visitor Parking
- Waste Disposal
- 24Hrs Backup Electricity
- Fire Alarm
- Intercom
- Wifi Connection

**Peninsula Land** is a part of the renowned Ashok Piramal Group. It is known for creating international landmarks that redefine India's skyline. It is an integrated real estate company with a diverse portfolio comprising retail ventures, world-class commercial projects, and residential complexes. The company has developed many landmark projects in Mumbai and strives to become a PAN India company by bringing real value and expertise to the real estate industry.

### Features

#### Luxury Features

- Power Back-up ■ Lifts ■ High Speed Internet

#### Lot Features

- Balcony

#### Recreation

- Swimming Pool ■ Park ■ Fitness Centre / GYM
- Club / Community Center

#### Security Features

- Security Guards ■ Intercom Facility

#### Exterior Features

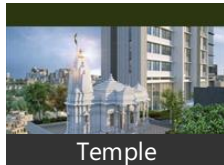
- Reserved Parking

#### Maintenance

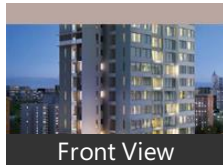
- Maintenance Staff ■ Rain Water Harvesting

### Gallery

#### Pictures



Temple



Front View



Swimming Pool

### Floor Plans



Floor Plan A



Floor Plan B



Floor Plan C



Floor Plan D



Floor Plan E



Location Map

## Location

## Landmarks

### Hotel

Four Seasons Hotel (<3km), West End Hotel (<7km), The St. Regis Mumbai (<2km), Hotel New Bengal (<6km), Wasabi by Morimoto (<9km), Shanghai Club (<2km), Savoury Restaurant (<7km), Oyo 65412 Hotel Windsor (<7km), Ambassador Group of Hotels India (<7km), Hotel Ripon Palace (<3km), Bentleys Hotel Colaba (<10km), Trident Bandra Kurla, Hotel City Point (<6km)

### Other features

Mumbai (<14km)

### Restaurant & Shops

Fashion Street Market (<7km), Cafe Madras (<8km), Big Bazaar (<2km), The Barking Deer (<3km), Haji Ali Juice Centre (<4km), Tonic (<2km), Colaba Market (<10km), 5 Spice (<8km), Gaylord (<8km), Kitab Khana (<8km), Smaaash (<4km), Hindmata Cloth Market (<4km)

### Shopping Centre

High Street Phoenix Mall (<2km), Byculla Market (<1km), Atria the Millennium Mall (<3km), Orchid City Centre (<3km)

### Public Transport

Mumbai Central Railway Station (<3km), Cotton Green Railway Station West (<4km), Grant Road (<4km), Phoenix Mill (<2km), Currey Road Railway Station (<2km), Dadar Railway Station (<6km), Mahalaxmi Railway Station (<2km), Chinchpokli (<1km), CST Railway Station East-Entrance 1 ... Dadar Bus Depot (<5km), Churchgate (<8km), Dadar Terminus Railway Station East... Charni Road Railway Station (<5km), CST Railway Station East-Entrance 3 ... Nehru Tarangan (<3km), Sandhurst Road Railway Station (<3km), Masjid Railway Station (<5km)

### Building

Nirmal Park (<0.5km), Lodha Bellissimo (<1km), Triveni Sadan No 2 (<2km), Silk House (<6km), Ashok Tower A (<2km), Ashok Towers (<2km), Ashok Tower (<2km), Adhar C (<1km), Peninsula Business Park (<3km), Kohinoor Compound (<5km), Indiabulls Finance Center (<4km), Manish Commercial Centre (<5km)

### Recreation

Bandra-Worli Sea Link (<8km), St Xaviers Ground Parel (<4km), Taraporewala Aquarium (<6km), Bharat Mata Cinema (<2km), Nehru Centre (<3km), Marine Drive (<6km), Alankar Cinema (<4km), Veermata Jijabai Bhosale Udyan-Entrance (<7km), Liberty Cinema (<7km), Hindmata Talkies (<4km), Hanging Gardens (<6km), Shri Siddhivinayak Ganapati Mandir (... Carnival Cinemas (<4km), Yashwant Natya Mandir (<7km)

### Hospitals & Clinics

Prince Aly Khan Hospital (<2km), TATA Memorial Hospital (<4km), Global Hospitals (<3km), Jaslok Hospital & Research Centre-ER, Habib Hospital (<4km), Dr. Dhimantra Shah Clinic (<1km), Divine (<4km), NM Medical (<6km), P D Hinduja National Hospital & Me...

### Museum

Nehru Planetarium (<3km), Nehru Science Centre (<3km)

#### ATM/Bank/Exchange

HDFC Bank-Kamala Mills (<3km), HDFC Bank-Hdfc Bank House Corpo... ICICI Bank (<0.5km), Punjab National Bank (<5km), Bank of Baroda-THAKURDWAR (<5k...

#### Taxi Stand

Nair Hospital (<2km), Mumbai Central Railway Station (<3k..

#### Business & Services

Indiabulls Finance Centre (<4km), Lodha Excelus (<1km), Empire Industries (<3km), Voltas (<1km), One Indiabulls Centre (<4km), Marathon Futurex (<2km), Essar House (<2km)

#### Landmark/Attraction

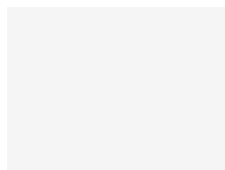
Maratha Mandir Cinema (<3km), Shri Siddhivinayak Ganapati Temple ... Gateway of India (<9km)

\* All distances are approximate

## Properties

### Properties available in 'Peninsula Salsette 27'

#### 2 Bedroom Flat for sale in Peninsula Salsette 27, Byculla, Mu.. 4.45 crores



70.51 SqMeters Apartment @ Rs.631116/SqMeter

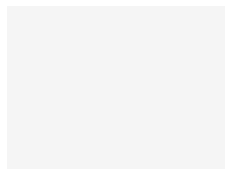
ID: P27912339 — Posted: 30 days ago by [Amit Gala](#)

2BHK Apartment in Peninsula Salsette 27 (Peninsula Salsette 27)

Live in a world of comfort and style at Peninsula Salsette 27 located in Byculla East, Mumbai Harbour. Book your 2 BHK apartment now. Sprawling across a carpet area of 759.0 sq. ft, it is an under construction property available for Rs. 4.45 Crore. The project has 2 towers, each of them ...

[more details](#)

#### 3 Bedroom Flat for sale in Peninsula Salsette 27, Byculla, Mu.. 6.45 crores



107.4 SqMeters Apartment @ Rs.600559/SqMeter

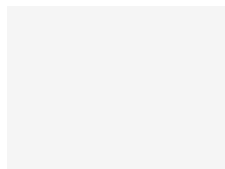
ID: P19791223 — Posted: Dec 10 by [Amit Gala](#)

3BHK Apartment in Peninsula Salsette 27, Mumbai (Peninsula Salsette 27)

Peninsula Salsette 27 is a residential project, offering a range of 3 BHK flats in Byculla East, Mumbai Harbour. It hosts exclusively designed 2 towers, each presenting an epitome of class and simplicity. We bring you a chance to book your 3 BHK flat that has a carpet area of 1156.0 sq. ft...

[more details](#)

#### 2 Bedroom Flat for sale in Peninsula Salsette 27, Byculla, Mu.. 4.76 crores



Apartment / Flat

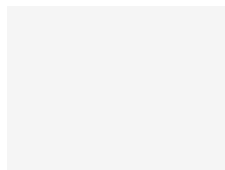
ID: P73845487 — Posted: Oct 30 by [Rajesh Dube](#)

2BHK Apartment in Peninsula Salsette 27, Mumbai (Peninsula Salsette 27)

Live in a world of comfort and style at Peninsula Salsette 27, located in Byculla East, Mumbai Harbour. Book your 2 BHK apartment now. Sprawling across a carpet area of 759.0 sq. ft. - 803.53 sq. ft., these are an under construction apartments. These are available at a price range of Rs. 4...

[more details](#)

#### 3 Bedroom Flat for sale in Peninsula Salsette 27, Byculla, Mu.. 6.7 crores



Apartment / Flat

ID: P66384548 — Posted: Oct 29 by [Rajesh Dube](#)

Apartment in Peninsula Salsette 27, Mumbai (Peninsula Salsette 27)

Experience a new style of living with Peninsula Salsette 27. The project offers an exclusive range of 3 BHK flats in Byculla East, Mumbai Harbour at a price range of Rs. 6.5 Crore - Rs. 6.7 Crore. These flats have a carpet area ranging from 1156.0 sq. ft. - 1191.0sq. ft. It is an under ...

[more details](#)

## Peninsula Salsette 27 News

### ■ 'Train to Busan' Sequel to Hit Indian Screens on This Day

Nov 26 - Mumbai: South Korean zombie thriller "Peninsula", directed by Yeon Sang-ho, is slated to be released in Indian theatres on November 27, Zee Studios and Kross Pictures said on Monday. "Peninsula" is ... [more](#)

### ■ Royal Enfield Bike Showrooms in Mumbai

Jun 5, 2019 - i.b patel road goregaon (east), Mumbai, Maharashtra, 400063 Vogue Motocorp 9167720529 Sakinaka Shop No 7 to 10, Akhtar Compound Andheri Ghatkopar Link Road Beside Hotel Peninsula Grand ... [more](#)

### ■ Royal Enfield Meteor 350 On Road Price in Mumbai

Nov 6, 2020 - Its a comfortable city bike and a good cruising bike.The controls are quite good with good balancing.Seating posture: very well designed.With comfort to the hands and no stress on back and ... [more](#)

#### ■ Peninsula Land L IPO

*Aug 12, 2020* - The IPO page of Peninsula Land Ltd. captures the details on its Issue Open Date, Issue Close Date, Listing Date, Face Value, Price band, Issue Size, Issue Type, and Listing Date's Open Price, High ... [more](#)

#### ■ Sri Lanka launches luxury train service in Jaffna with India's assistance

*2 days ago* - The train service will criss-cross the island nation, connecting Colombo with Kankesanthurai on the northern tip of the Jaffna Peninsula, which has a Tamil-majority population. Ms. Wanniarachchi ... [more](#)

#### ■ Moon seeks Australia's continued support for Korean Peninsula peace

*29 days ago* - Visiting South Korean President Moon Jae-in on Tuesday met Australian opposition Labor Party leader Anthony Albanese and asked for the country's continued support for Seoul's efforts to bring lasting ... [more](#)

#### ■ The Peninsula Hotels Salaries

*27 days ago* - What is the highest salary at The Peninsula Hotels? The highest-paying job at The Peninsula Hotels is a Food and Beverage Manager with a salary of \$98,573 per year. What is the lowest salary at The ... [more](#)

#### ■ Peninsula Land Ltd.

*Aug 12, 2020* - Company has spent 47.55% of its operating revenues towards interest expenses and 5.47% towards employee cost in the year ending 31 Mar, 2021. (Source: Consolidated Financials) Stock Returns vs Nifty ... [more](#)

## Expert Reviews on Peninsula Salsette 27

### Explore

[Projects in Mumbai](#)

[Brokers in Mumbai](#)

### More Information

### Report a problem with this listing

Is any information on this page outdated or incorrect?

[Report it!](#)

**Disclaimer:** All information is provided by advertisers, including builders/agents/owners, or collected from publicly available sources and may not be verified under RERA. Any information provided on this website, including facts and figures, should be verified independently, including via the relevant RERA website, before entering into any transaction. PropertyWala.com is only an advertising platform to help connect buyers and sellers and is not a party to any transaction, nor shall be responsible or liable to resolve any disputes between them.

[Home](#) » [Mumbai Real Estate](#) » [Projects in Mumbai](#) » [Peninsula Salsette 27 - Byculla, Mumbai](#)