



## Shop for sale in Sector 150, Noida

40 - 60 lacs



★ Featured

### Commercial Shops In Sethi Mart Sector-150 Noida

Noida, Sector 150, Noida - 201301 (Uttar Pradesh)

- Area: 355 SqFeet
- Total Floors: Three
- Facing: East
- Furnished: Semi Furnished
- Transaction: New Property
- Price: 5,503,000
- Rate: 15,501 per SqFeet **-10%**
- Age Of Construction: Under Construction
- Possession: Within 1 Year

### Advertiser Details



**Tymse**  
**TYMSE INDIA PVT. LTD.**  
Advertising Manager

Sector 63, Noida  
mob: 8448102881  
tel: 8447365251  
mail: leads\_seg14@gmail.com  
www.tymse.in/



Scan QR code to get the contact info on your mobile

[View all properties by Tymse India Pvt Ltd](#)

### Description

Sethi Mart is one of the commercial developments of Sethi Group. The project offers commercial shops at very competitive and affordable price and is located within the premises of Sethi Venice. The site is well connected by different modes of transportation and is in close proximity of various civic utilities. The project is well equipped with all modern amenities and 24 x 7 security service to facilitate the business needs.

When you contact, don't forget to mention that you saw this ad on PropertyWala.com.

### Features

#### General

- Power Back-up
- Lifts
- High Speed Internet
- Wi-Fi

#### Security

- Security Guards
- Electronic Security
- Intercom Facility
- Fire Alarm

#### Maintenance

- Water Supply / Storage
- Waste Disposal

### Location

\* Location may be approximate

### Landmarks

#### Shopping

- Satyarth (<9km), Mini So (<7km)

#### Education

- Prathmic Vidyalaya (<12km), CAREER LAUNCHER EDUCATE LTD (... St Joseph, Ryan International School Beta1 (<9k...
- RPS International School (<5km), Vishwa Bharati Public School (<8km), Greater Valley School (<5km),
- Fr. Agnel School (<10km), Kendriya Vidyalaya (<6km), Pragyan School (<9km), Cambridge School (<9km),
- BrainTree Global School (<10km), HOLY PUBLIC SCHOOL (<9km), EuroKids Pre-School (<10km),
- Ram-Eesh International School (<8km) BLISS Preparatory School (<6km), Apeejay International School (<9km),
- Wonder Kids (<9km), Business School of Delhi (<8km), Top 10 Schools in the world (<10km)

#### Transportation

- indocopters private limited (<12km), YOO Terraces Tribecca Sec 150 Noida... Gbu Heliport (<4km),
- JP Greens Helipad (<8km), Jaypee Greens Helipad (<8km), Bhati Helipad (<9km), BIC Helipad No.1 (<13km),
- BIC Helipad No. 2 (<13km)

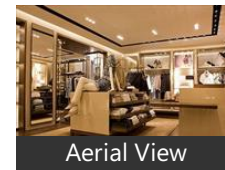
#### Religious Places

- Dolphin Kids (<10km), St. George Church (<12km), House Of Prayer (<8km), Glorious Living Assembly Dominion ...
- House Of Praise International Church.. TRUE GOSPEL MISSIONARY CHURCH. AG church Greater Noida (<14km),
- AG Worship Center (<14km)

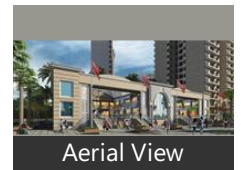
#### Recreation

- Movie Time Cinemas (<7km), INOX Cinema (<8km), ICC Cricket Stadium (<14km), Cinepolis (<7km),
- Roxy 7D Cinema (<7km), Ch.Hansraj Market (<10km), Inox Movie (<11km), INOX Multiplex (<11km),
- INOX Omaze Connaught Place Mall NY Cinemas: Sonic World Mall (<14k Sonic World Mall Greater Noida [more...](#)

### Pictures



Aerial View



Aerial View

## Locality Reviews

Sector 150, Noida

Sector-150, Noida Expressway is an upcoming prime location as a residential cum corporate hub. Sector-150 Noida Expressway has been declared as a smart sector & is also a special economic zone, this sector is quite close to Pari Chowk, Night safari, Gautam Budh university, formula 1 & Yamuna Expressway. Sector-150 at Noida Expressway enjoys an added advantage as the proposed metro station at sector-149 is quite close, quick,easy connectivity via Noida Expressway adds to the advantage of this upcoming prime location.

### Pros:

- *Quick and easy connectivity*
- *Smart sector*
- *Corporate cum residential sector*

Posted: Apr 24, 2015 by [Plots Sale \(Balaji Properties Mayur Vihar\)](#)

### Explore

[Similar Properties](#)

[Properties in Sector 150, Noida](#)

[Projects in Noida](#)

[Brokers in Noida](#)

### More Information

### Report a problem with this listing

Is this property no longer available or has incorrect information?

[Report it!](#)

**Disclaimer:** All information is provided by advertisers and should be verified independently before entering into any transaction. PropertyWala.com is only an advertising platform to help connect buyers and sellers and is not a party to any transactions, nor shall be responsible or liable to resolve any disputes between them.