

## Warehouse / Godown for rent in Sector 90, Noida

13.3 lakhs



★ Featured

### Newly Constructed Warehouse In Noida

Sector 137 Rd, Sector 90, Noida - 201301 (Uttar Pradesh)

- Area: 38000 SqFeet
- Monthly Rent: 1,330,000
- Rate: 35 per SqFeet
- Age Of Construction: 1 Years
- Available: Immediate/Ready to move

### Description

Modern PEB Compliant warehouse

Current status: Ready to move.

Internal flooring: Trimix, Floor load: 4 ton/sq. mtr.

External flooring: RMC

Eve height - 10 mtr. & Centre height 12 mtr.

Dock nos : 6, Dock height: 4 ft.

Ventilation: Turbo Vents

Fire Safety Details: Hydrant and Sprinklers - Available

Fire NOC - Available

Other amenities: Guard room, Toilets, Parking

Distance map: City center (5km), Noida - Greater Noida Expressway (5KM)

When you contact, don't forget to mention that you saw this ad on PropertyWala.com.

### Features

#### Security

- Fire Alarm

#### Recreation

- Truck Parking

#### Exterior

- Visitor Parking
- Truck Parking

### Location

\* Location may be approximate

### Landmarks

#### Recreation

Central Park (<0.5km), Noida Authority Sec-137 Park (<0.5km... Tofaa Collections (<1km), Medicinal Park Gate No 1 (<1km), Medicinal Park Gate No 2 (<1km), Noida Authority Park (<1km), Park (<1km), Medicinal Park Gate No 3 (<1km), Medicinal Park Gate No 4 (<1km), Park-Sector 142 (<2km), Candor Fiesta (<2km), Harit Vatika (<2km)

#### Hotel

Eco Suites by Hyphen (<0.5km), Versace House (<0.5km), Moonraker Classic Studio (<0.5km), Savoy Grand 2 BHK Condominium (<1km), Pavilion en-Suite by Lemon Orchid (... Luxurious & Comfy Studio (<0.5km), Sarovar Nirwana (<0.5km), Blue Sapphire Suite Bathtub and Brea.. Green Vistara Regent Courtyard (<1km... 23rd Downtown City View (<1km), Casablanca Suites (<1km), European Standard Boutique Studio ... Paris County (<1km), Acs Studio (<1km), Rose Inn-Bed & Breakfast (<1km), The Karma Square (<1km), Oyo 75428 Sai Sadhna Guest House (... PG in Noida (<2km)

#### Restaurant & Shops

Daily Mart (<0.5km), Shopping Basket (<0.5km), Honeychew (<0.5km), Avr Super Mart (<0.5km),

### Advertiser Details

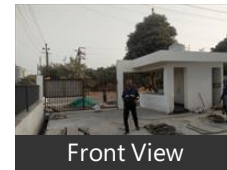
**PMG Land Aggregators LLP**  
Pankaj Jain  
Partner

Samakha, New Delhi  
mob: 9818896670  
tel: 9811006052  
mail:  
www.aggregators.co.in



Scan QR code to get the contact info on your mobile  
[View all properties by PMG Land Aggregators LLP](#)

### Pictures



Nishmanya (<1km), Aadya Fashions (<1km), That, All in Store (<1km), Super Basket (<1km), Nature Gift (<1km), Cactus Clothing Private Limited (<1k... The Designerz - Fashion Boutique (<... Market (<1km), Maa Narayani Super Store (<1km), Vardhman Kids World-Family Store (... Massimo Dutti India (<1km), Ch. Lakhmi Bhati Market (<1km), Sai Durga Boutique (<1km), Sunflower Garments (<1km), Kavita Women, Love General Stores (<2km), Mohit General Store (<2km), Ezee Mart Noida (<2km), Manoj Readymade (<2km), Karan Kirana Store (<2km), Avinash Kirana Stores (<2km), Munchie (<2km), Ratore Kirana Stores (<2km), Om Kirana Stores (<2km), Vero Moda (<2km), Raj General Stores (<2km)

[more...](#)

## Locality Reviews

Sector 90, Noida

Excellent Location. Adjacent to upcoming Infosys campus of 28 acres. Next to upcoming ISBT & Metro Station. Surrounded by 75000 residences in the radius of 3-4 kms.

**Pros:**

- Excellent Location

Posted: Oct 14, 2016 by [Vishal Kumar \(Global Realty Zone\)](#)

Sector 90, Noida is rated 9 out of 10 based on 1 user reviews.

Disclaimer: The reviews are opinions of PropertyWala.com members, and not of PropertyWala.com.

### Explore

[Similar Properties](#)

[Properties in Sector 90, Noida](#)

[Projects in Noida](#)

[Brokers in Noida](#)

### More Information

### Report a problem with this listing

Is this property no longer available or has incorrect information?

[Report it!](#)

**Disclaimer:** All information is provided by advertisers and should be verified independently before entering into any transaction. You may visit the relevant RERA website of your state to verify the details of this property. PropertyWala.com is only an advertising platform to help connect buyers and sellers and is not a party to any transactions, nor shall be responsible or liable to resolve any disputes between them.